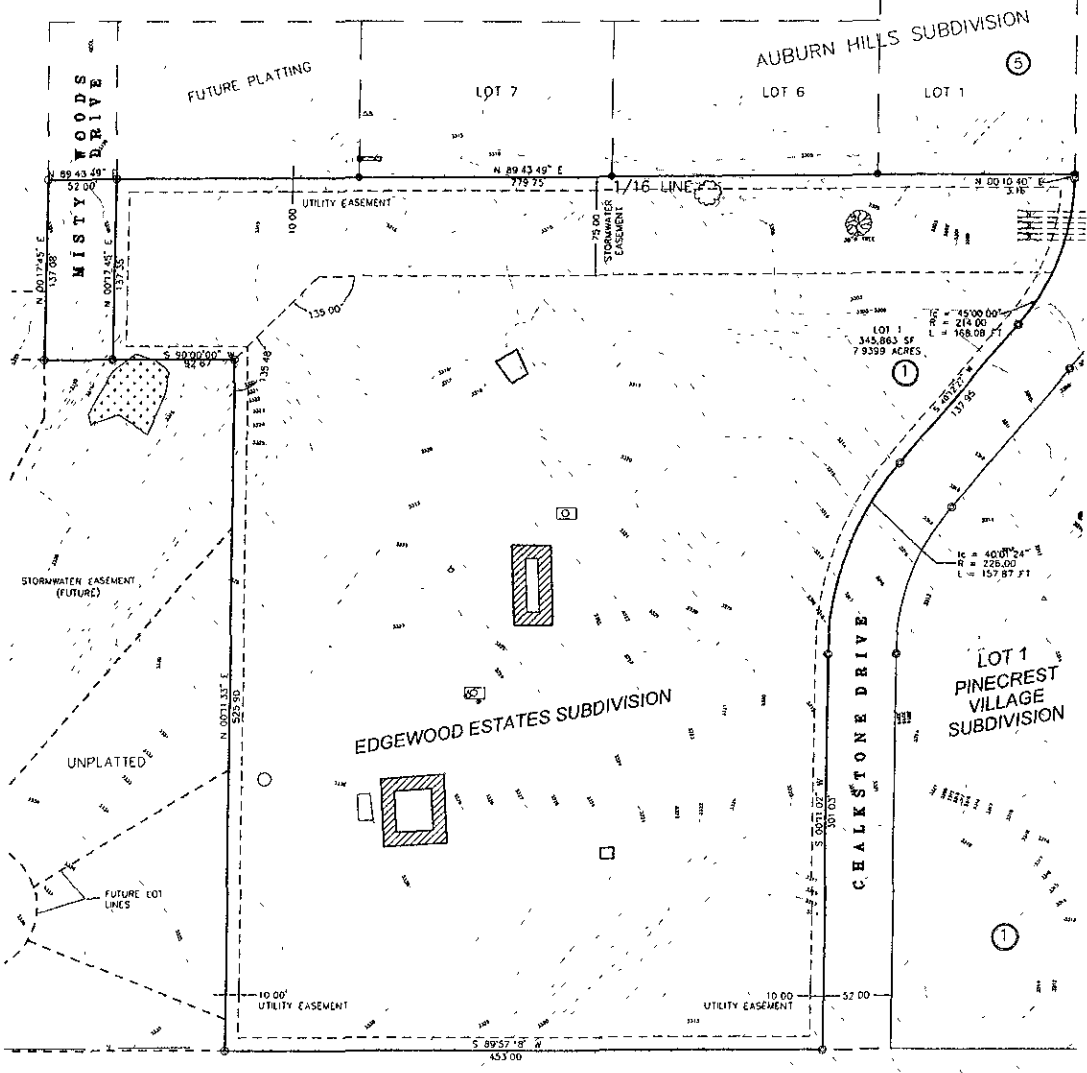
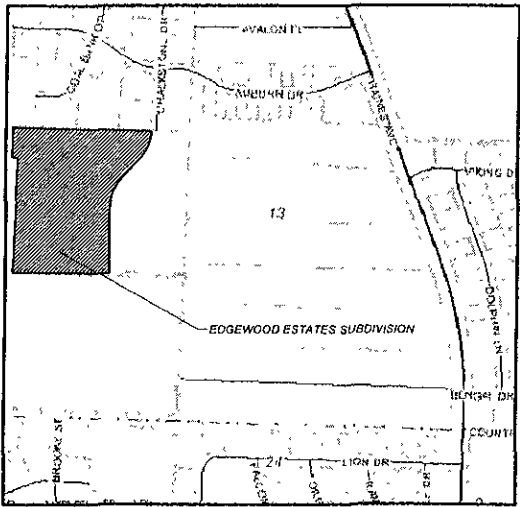


**PRELIMINARY PLAT OF:
EDGEWOOD ESTATES SUBDIVISION (MULTI FAMILY HOUSING)
PART OF THE SW1/4 SECTION 13, T2N-R7E
RAPID CITY, PENNINGTON COUNTY, SOUTH DAKOTA**



UNPLATTED

UNPLATTED



VICINITY MAP

PLAT INFORMATION

LOT AREA - 345,863 SQ. FT. OR 7.9399 ACRES
RIGHT OF WAY AREA - 7,142 SQ. FT. OR 0.1640 ACRES
TOTAL AREA - 353,005 SQ. FT. OR 8.1039 ACRES

PLAT LEGEND

- DENOTES MONUMENT FOUND
- DENOTES LOT CORNERS

RECEIVED

AUG 2 2005

Rapid City Growth
Management Department

SCALE 1" = 60'

AUGUST 2005

OWNER,
GANDOLF GROUP, L.L.C.
5354 Parkdale Dr., Suite 350
St. Louis Park, MN 55416-1603

ENGINEER,
KADRMAS, LEE & JACKSON
3237 East Broadway
Bismarck, ND 58502

**Kadmas
Lee &
Jackson**
Engineers Surveyors
Planners