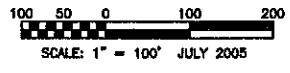
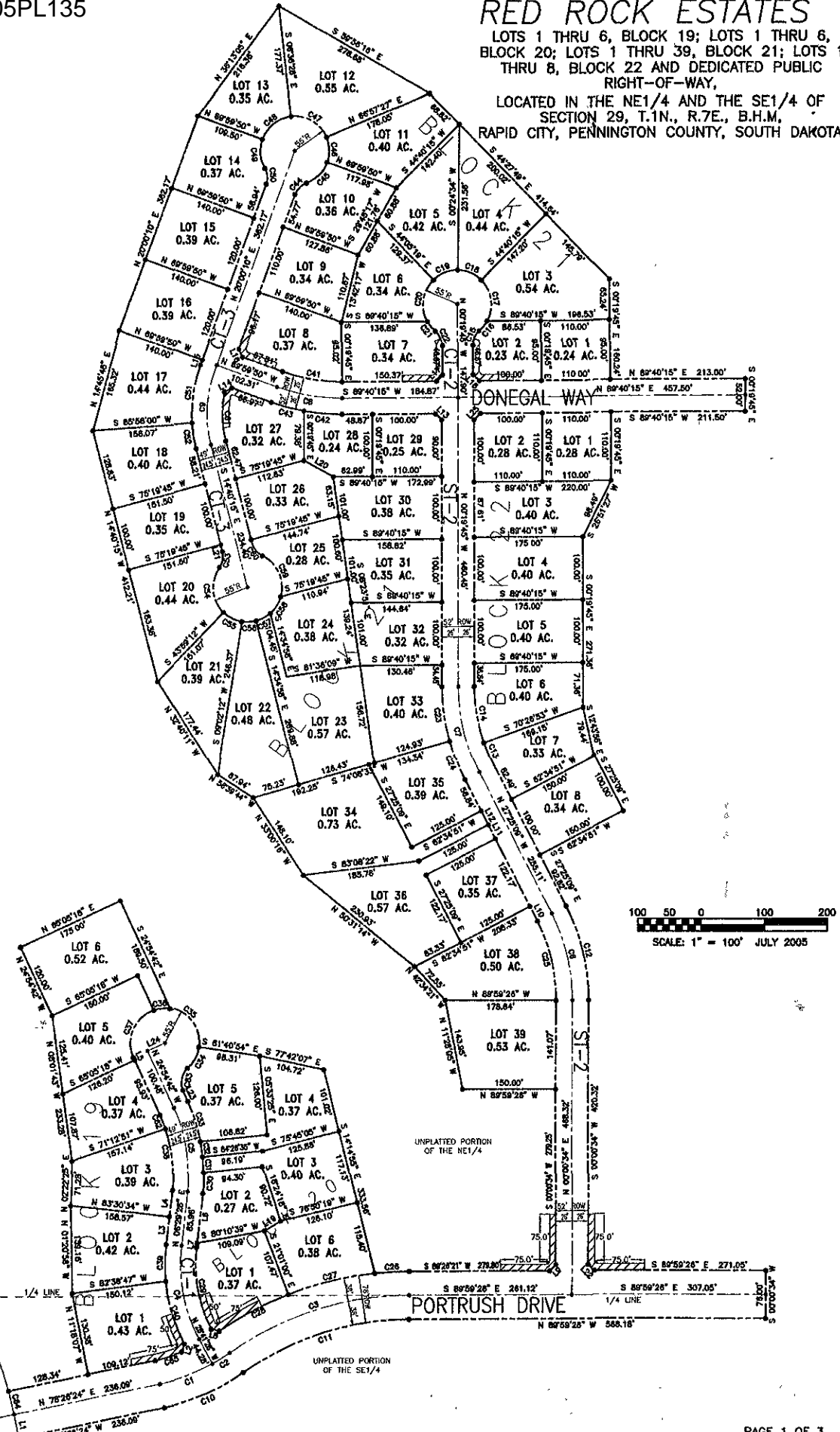



PLAT OF RED ROCK ESTATES

LOTS 1 THRU 6, BLOCK 19; LOTS 1 THRU 6,
BLOCK 20; LOTS 1 THRU 39, BLOCK 21; LOTS 1
THRU 8, BLOCK 22 AND DEDICATED PUBLIC
RIGHT-OF-WAY,

LOCATED IN THE NE1/4 AND THE SE1/4 OF
SECTION 29, T.1N., R.7E., B.H.M.,
RAPID CITY, PENNINGTON COUNTY, SOUTH DAKOTA



 PREPARED BY: ARLETH & ASSOCIATES	26 KIRK ROAD DEADWOOD, SD 57732 605-578-1637	JOB NO. 04-0066	DATE: JULY 7, 2005	APPROVED: JMA	PREPARED FOR: DREAM DESIGN INTERNATIONAL, INC 528 KANSAS CITY STREET, SUITE 4 RAPID CITY, SOUTH DAKOTA 57701 (605) 948-0538
			SCALE: 1" = 100'		