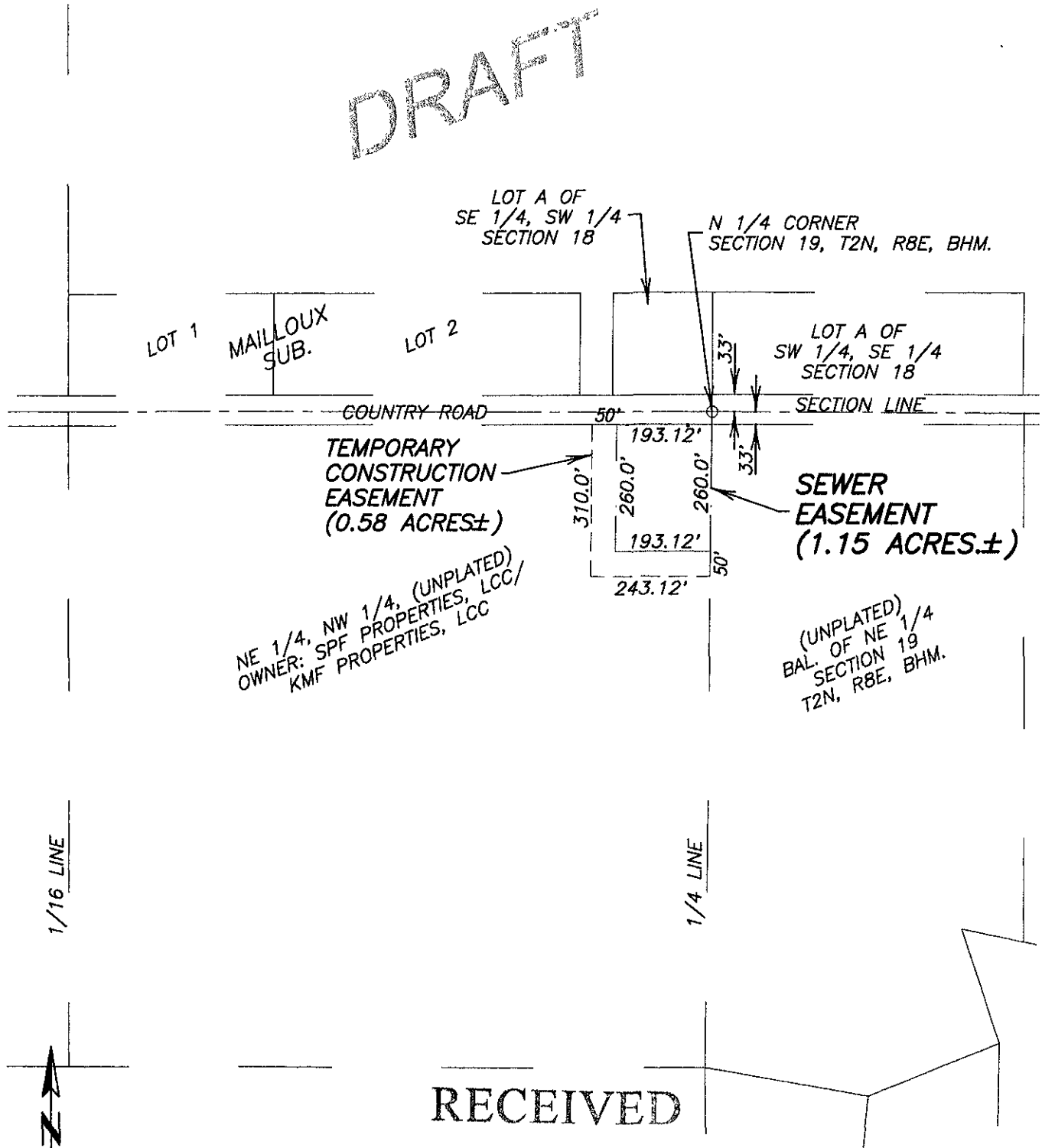


EXHIBIT "A"
PERMANENT SEWER EASEMENT
LOCATED IN
NE 1/4, NW 1/4, SECTION 19, T2N, R8E, BHM.
PENNINGTON COUNTY, SOUTH DAKOTA

DRAFT



1/16 LINE

1/4 LINE

RECEIVED

AUG 15 2005

**Rapid City Growth
Management Department**

