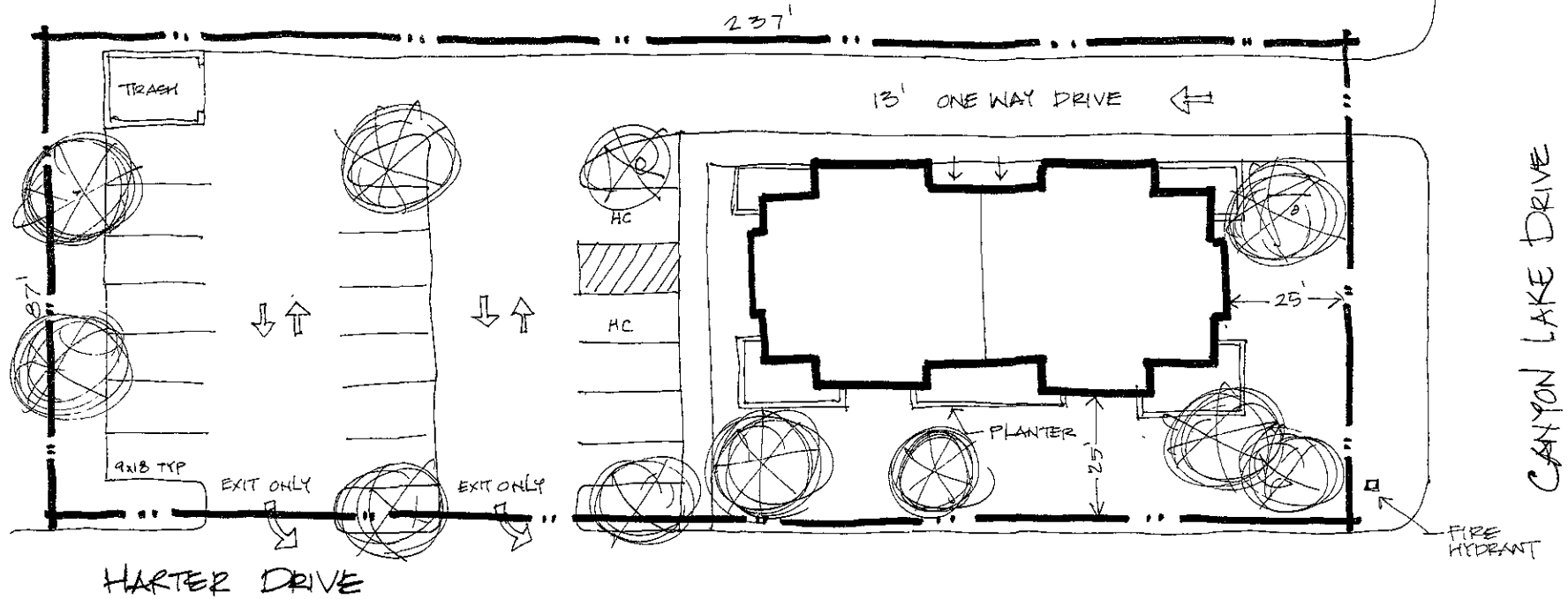


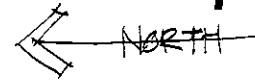
05CA035



PROJECT INFORMATION :

LOT AREA: 20,619 S.F.
 BUILDING AREA: 3000 SF
 PARKING REQUIRED: 15 CARS
 PARKING SUPPLIED: 18 CARS

SITE DEVELOPMENT PLAN :



NEW OFFICE BUILDING

SEPTEMBER 22, 2005

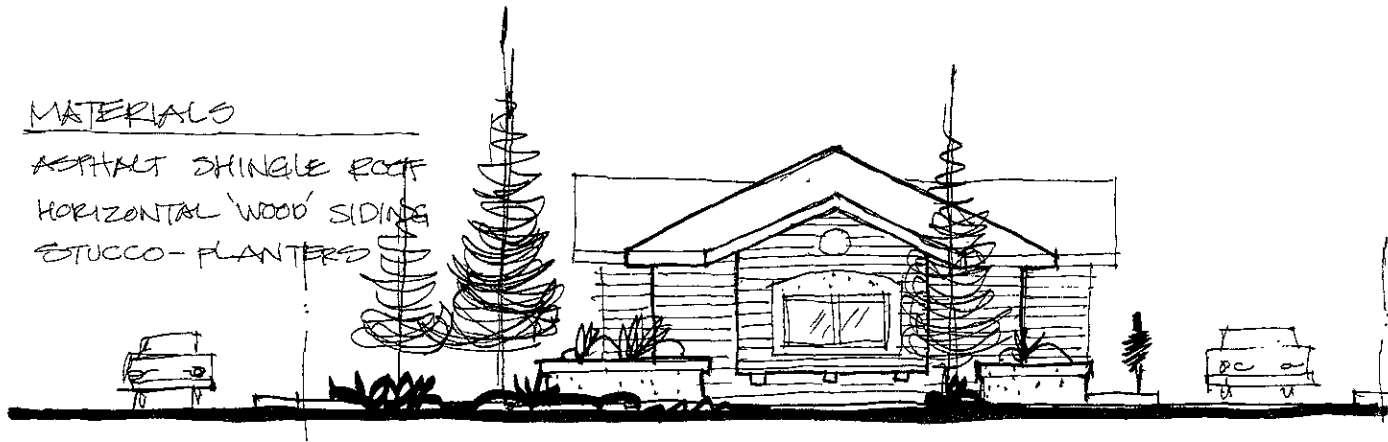
TSP, Inc
 600 Kansas City Street
 Rapid City, SD 57701

phone (605) 343-6102
 fax (605) 343-7159

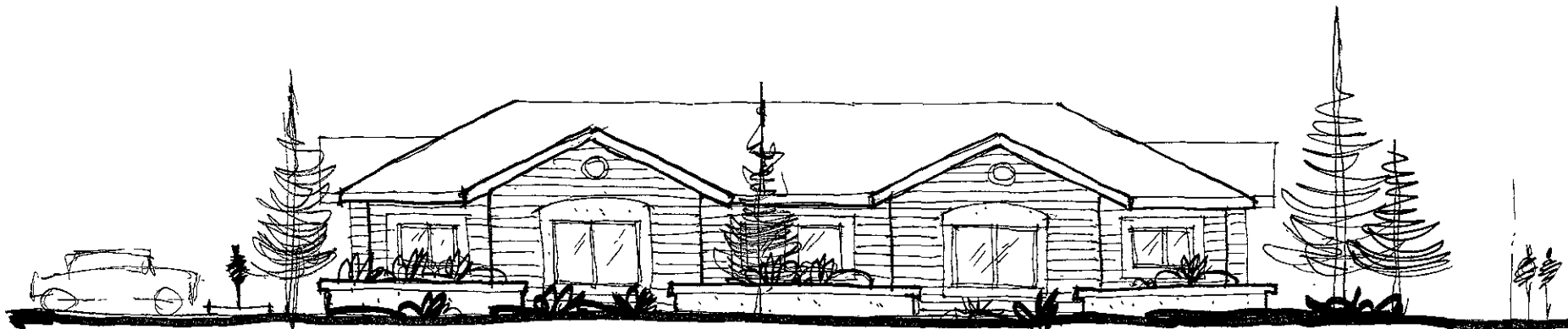


MATERIALS

- ASPHALT SHINGLE ROOF
- HORIZONTAL 'WOOD' SIDING
- STUCCO-PLANTERS



CANYON LAKE DRIVE



HARTER DRIVE

TSP, Inc
600 Kansas City Street
Rapid City, SD 57701

phone (605) 343-6102
fax (605) 343-7159



SEPTEMBER 22, 2005