

05SV049

# PLAT OF KOSTELECKY SUBDIVISION

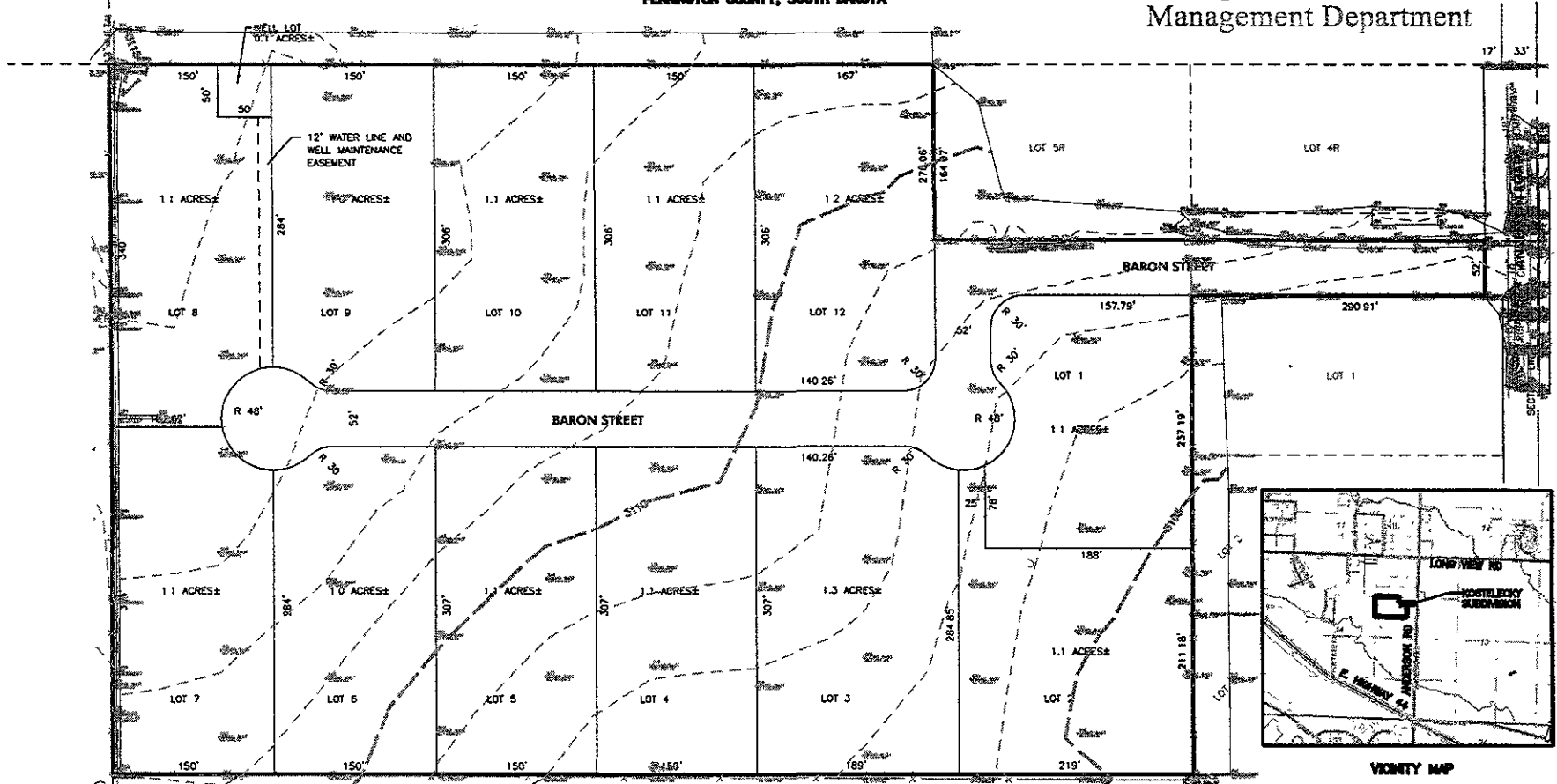
JUL 08 2005

LOTS 1 THRU 12, WELL LOT AND THE DEDICATED BARON STREET RIGHT-OF-WAY:  
FORMERLY LOT 8 OF TRACT A OF KNIGHT'S ACRES SUBDIVISION  
LOCATED IN THE N 1/2 OF THE SE 1/4 OF THE NE 1/4 OF SECTION 14, T4N, R06E, B.H.M.,  
PENNINGTON COUNTY, SOUTH DAKOTA

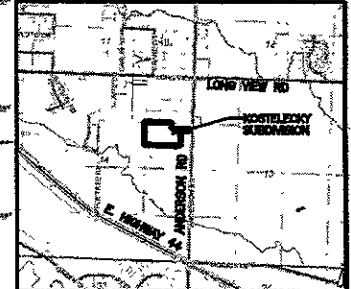
Rapid City Growth  
Management Department



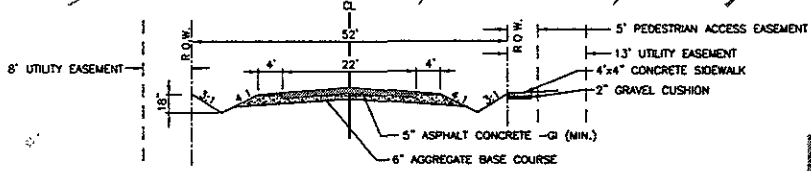
LAYOUT PLAT



FILED	AS NOTED
DATE	07-08-05
BY	PLATT
OFFICE	PLATT
ADDRESS	PLATT
PHONE	PLATT
FAX	PLATT
EMAIL	PLATT
WWW	PLATT

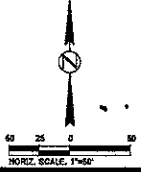


NOTE:  
A 8' UTILITY EASEMENT ON ALL  
REAR AND SIDE LOT LINES



TYPICAL SECTION - SUBCOLLECTOR (NO PARKING)

**PRELIMINARY  
NOT FOR CONSTRUCTION**



KOSTELECKY  
SUBDIVISION