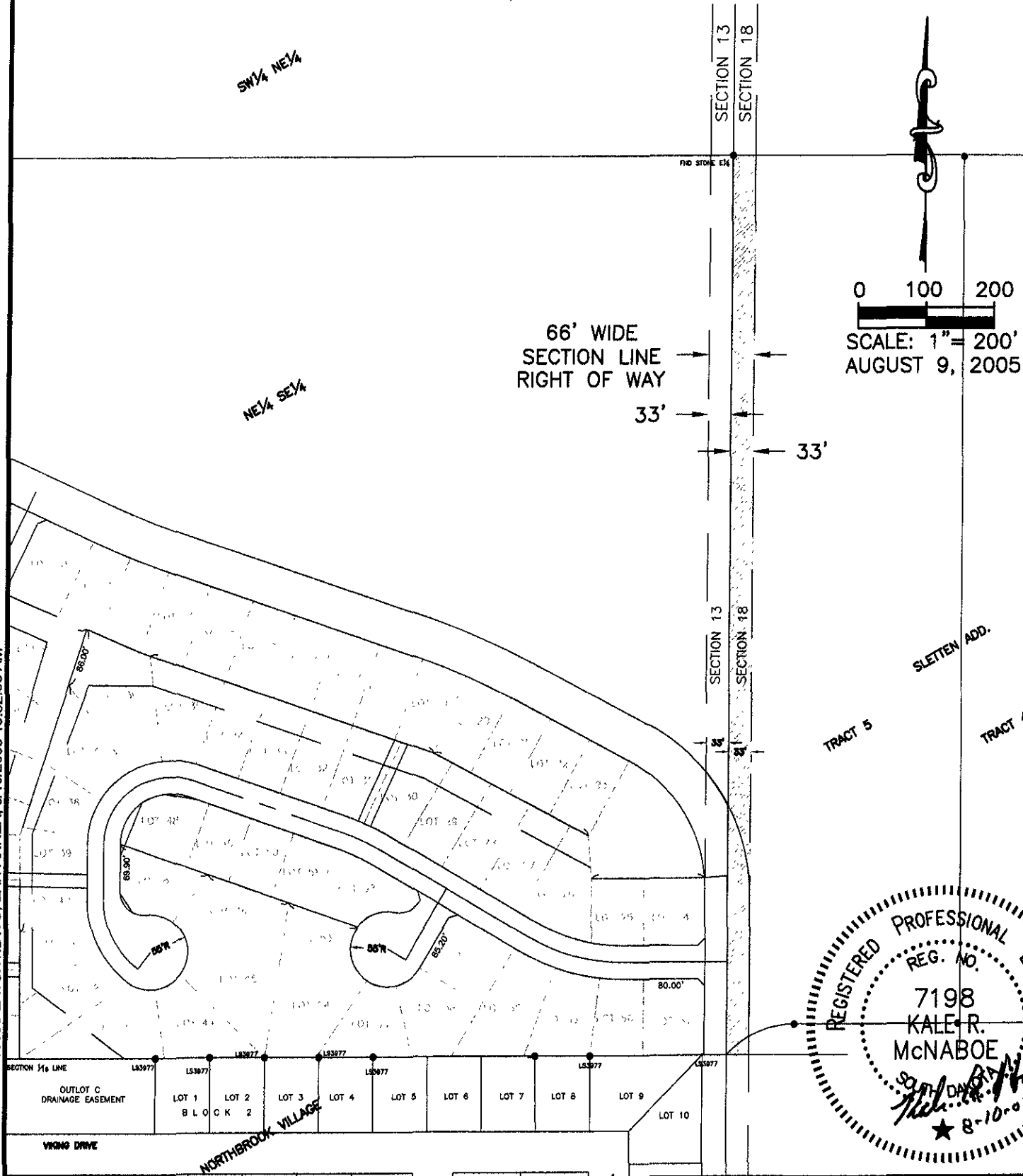
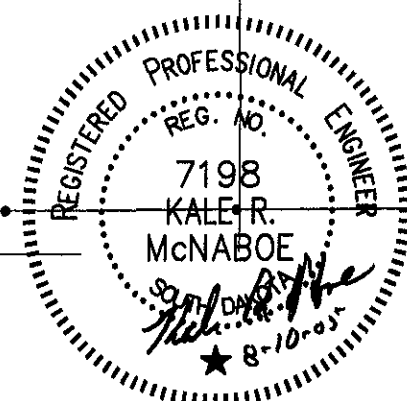


EXHIBIT "A"

PROPOSED ANNEXATION TO THE CITY OF RAPID CITY
THE WEST 33' OF TRACT 5 OF SLETTEN ADDITION
LOCATED IN THE W $\frac{1}{2}$ NW $\frac{1}{4}$ SW $\frac{1}{4}$, SECTION 18, T2N, R8E, B.H.M.,
PENNINGTON COUNTY, SOUTH DAKOTA



0 100 200
SCALE: 1" = 200'
AUGUST 9, 2005



C:\DRAWINGS\9003\PLATSH1.DWG, EXH-ANNEX, 8/10/2005 10:52:53 AM