

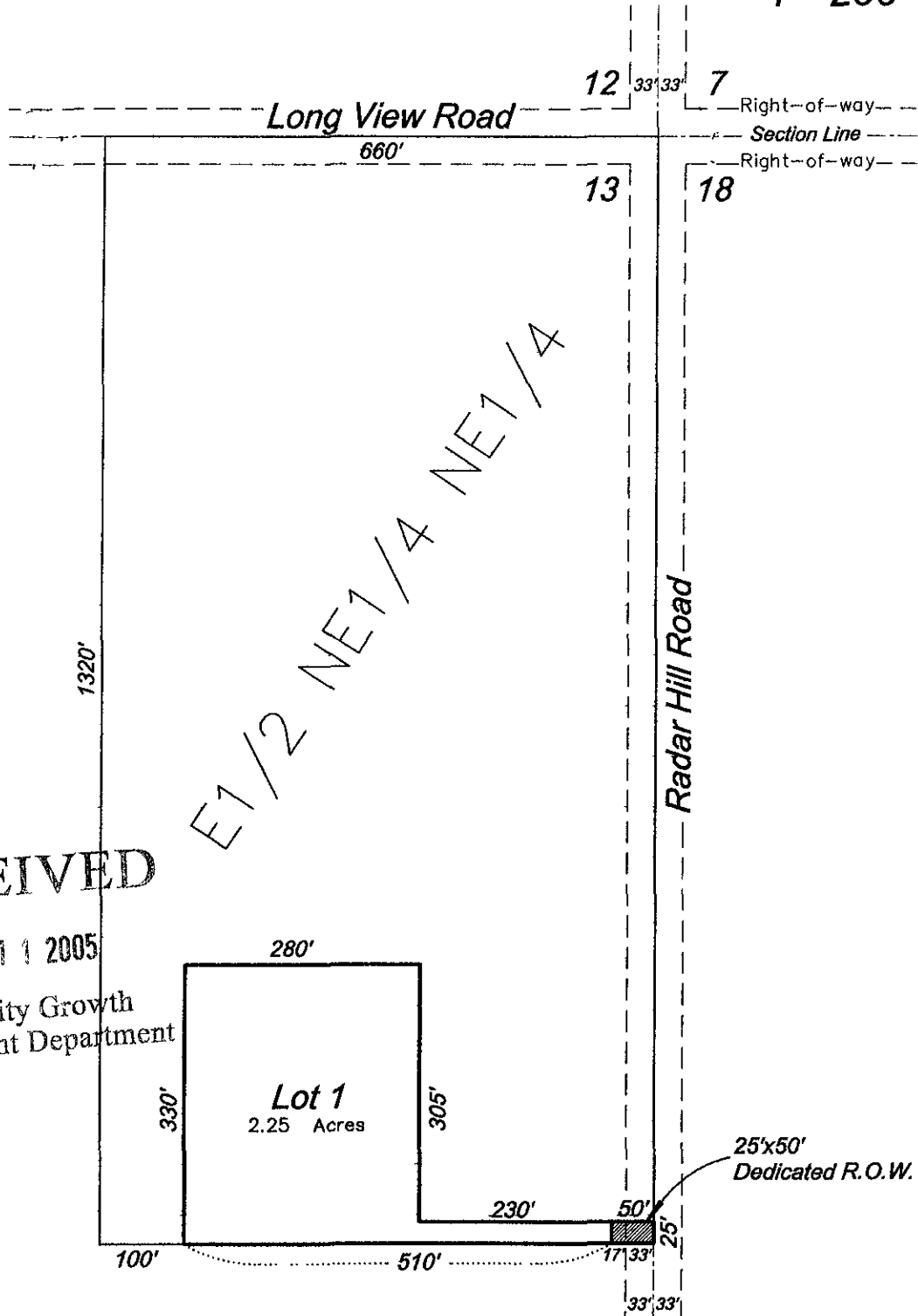
LAYOUT

05SV016

LOT 1 OF CRYSTAL DOME SUBDIVISION
AND DEDICATED RIGHT-OF-WAY
LOCATED IN THE E1/2 NE1/4 NE1/4 SECTION 13, T1N, R8E, BHM
PENNINGTON COUNTY, SOUTH DAKOTA



1"=200'



RECEIVED

FEB 11 2005

Rapid City Growth
Management Department

PREPARED BY:

FISK LAND SURVEYING & CONSULTING ENGINEERS, INC.

P.O. BOX 8154, RAPID CITY, SD 57709 (605) 348-1538 February 7, 2005

NO.