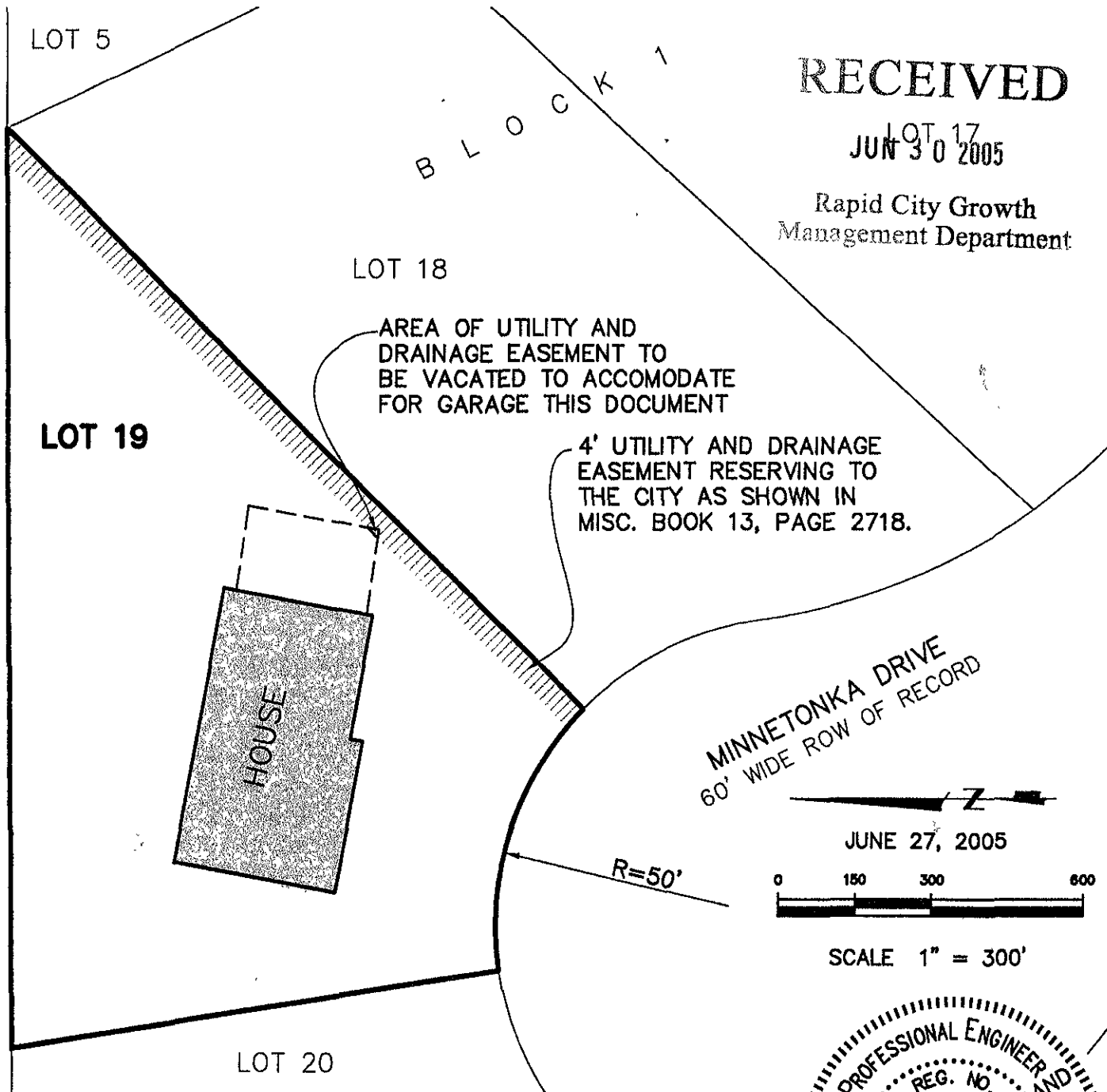


EXHIBIT 'A'

# VACATION OF UTILITY AND DRAINAGE EASEMENT LOT 19, BLOCK 1, SHERIDAN HEIGHTS SUBDIVISION

LOCATED IN THE NE1/4 OF SW1/4 OF  
SECTION 10, T1N, R7E, BHM,  
RAPID CITY, PENNINGTON COUNTY, SOUTH DAKOTA



## RECEIVED

LOT 17  
JUN 30 2005

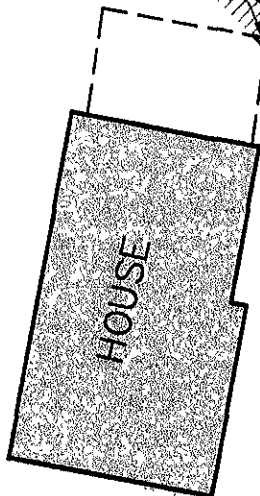
Rapid City Growth  
Management Department

LOT 18

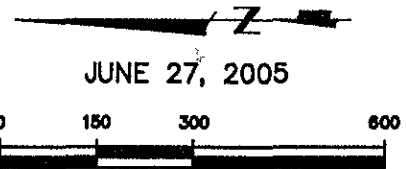
AREA OF UTILITY AND  
DRAINAGE EASEMENT TO  
BE VACATED TO ACCOMODATE  
FOR GARAGE THIS DOCUMENT

4' UTILITY AND DRAINAGE  
EASEMENT RESERVING TO  
THE CITY AS SHOWN IN  
MISC. BOOK 13, PAGE 2718.

LOT 19



MINNETONKA DRIVE  
60' WIDE ROW OF RECORD



JUNE 27, 2005

R=50'

SCALE 1" = 300'

LOT 20



## Renner Associates, LLC.

616 Sixth St. \* Rapid City, SD 57701 \* 605/721-7310  
FAX: 605/721-7313 \* E-MAIL: Gary@RennerAssoc.com

