

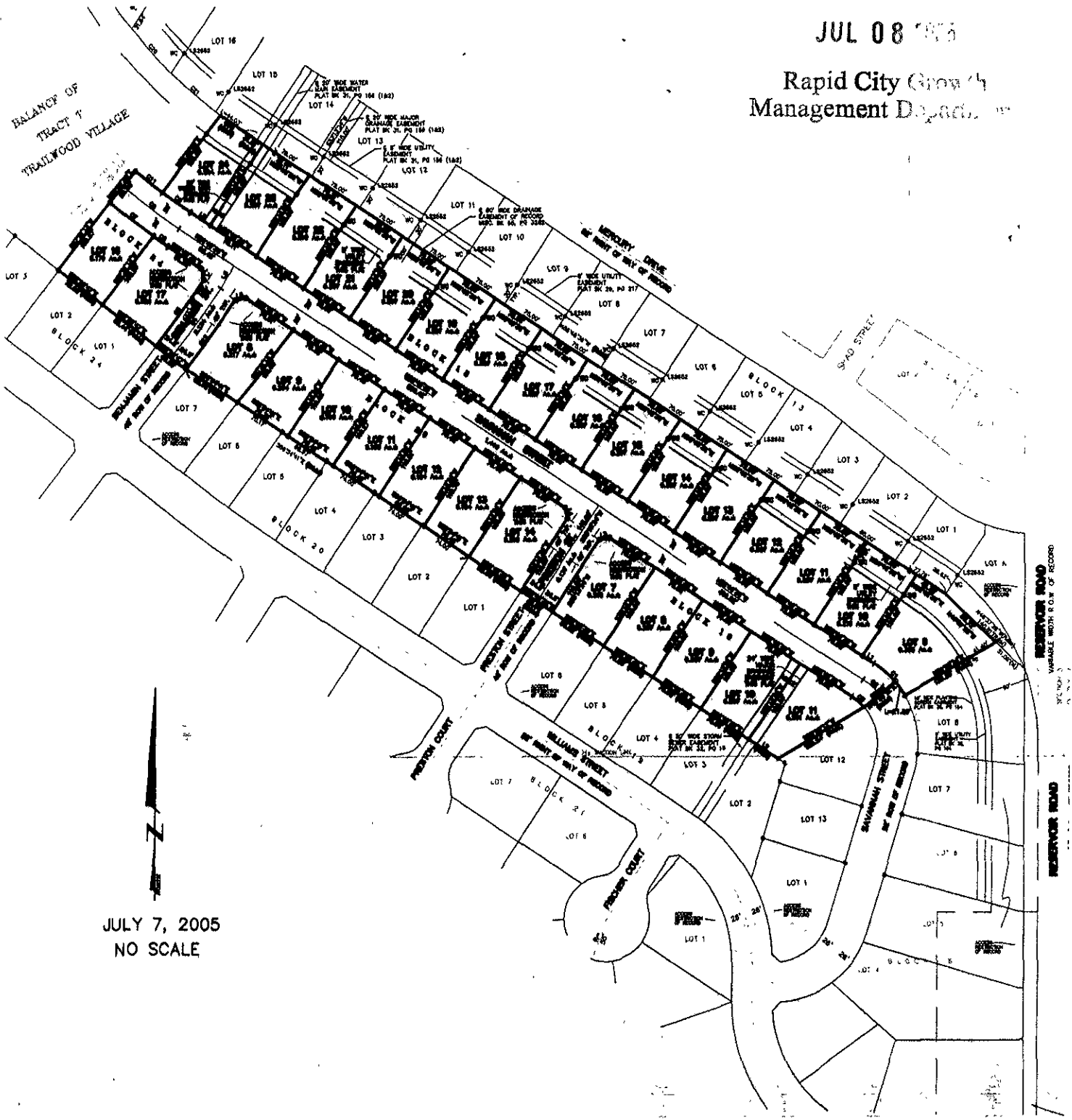
05SV051

PLAT OF  
**LOTS 9 THRU 24 OF BLOCK 18, LOTS 7 THRU 11 OF BLOCK 19,  
 LOTS 8 THRU 14 OF BLOCK 20, AND LOTS 16 THRU 17 OF BLOCK 24,**  
**TRAILWOOD VILLAGE**  
 (FORMERLY A PORTION OF TRACT T OF TRAILWOOD VILLAGE)  
 LOCATED IN THE N $\frac{1}{2}$  OF THE SE $\frac{1}{4}$ ,  
 SECTION 10, T1N, R8E, B.H.M.,  
 PENNINGTON COUNTY, SOUTH DAKOTA

RECEIVED

JUL 08 2005

Rapid City Growth  
Management Department



JULY 7, 2005  
NO SCALE

C:\DRAWINGS\1079.12\PLATSHT.DWG. 8x11. 7/7/2005 11:36:41 AM