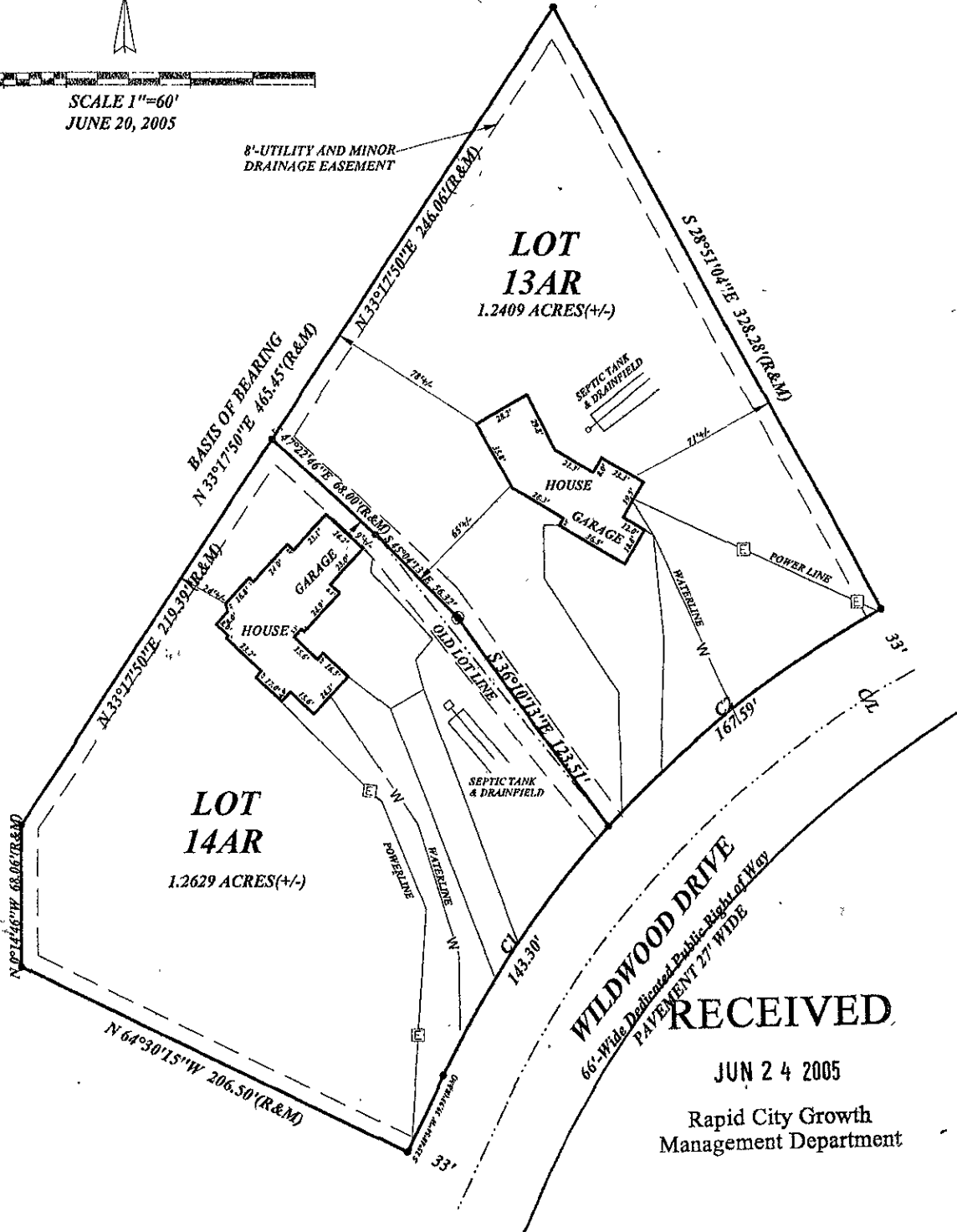




**SITE PLAN FOR LOT 13AR AND 14AR IN BLOCK 3 OF WILDWOOD SUBDIVISION, RAPID CITY, PENNINGTON COUNTY, SOUTH DAKOTA.**

SCALE 1"=60'  
JUNE 20, 2005



**WILDWOOD DRIVE**  
66'-Wide Dedicated Public Right of Way  
PAVEMENT 27' WIDE

**RECEIVED**  
JUN 24 2005  
Rapid City Growth  
Management Department

Curve	Delta Angle	Radius	Arc	Tangent	Chord	Chord Bearing
1	16°26'10.5"	499.530	143.298	72.145	142.808	N 33°40'11.0" E
2	19°13'20.4"	499.530	167.589	84.589	166.804	N 51°34'47.0" E