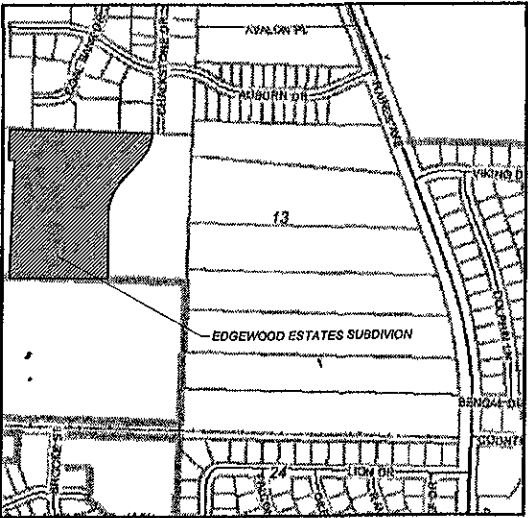
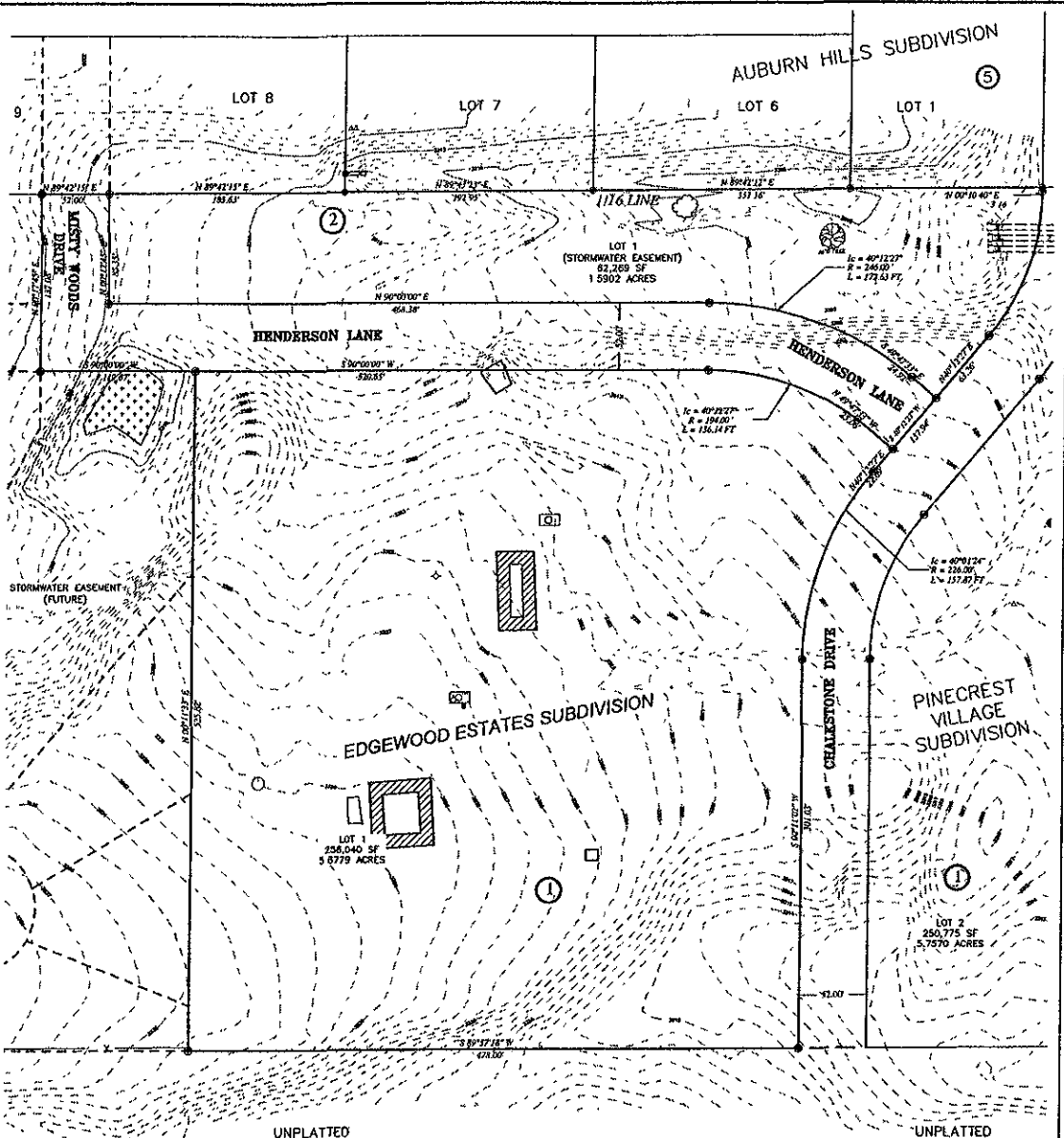


EDGEWOOD ESTATES SUBDIVISION (MULTI FAMILY HOUSING)

(FORMERLY A PORTION OF LOT 8R, MADISON'S SUBDIVISION)

LOCATED IN THE SW1/4 SECTION 13, T2N--R7E RAPID CITY, PENNINGTON COUNTY, SOUTH DAKOTA



RECEIVED
JUL 08 2005
 Rapid City Growth Management Department
 SCALE: 1" = 60'
 JUNE 2005

OWNER:
 GANDOLF GROUP, L.L.C.
 5354 Parkdale Dr., Suite 350
 St. Louis Park, MN 55416-1803

ENGINEER:
 KADRMAS, LEE & JACKSON
 3237 East Broadway
 Bismarck, ND 58502

**Kadmas
 Lee &
 Jackson**
 Engineers Surveyors
 Planners