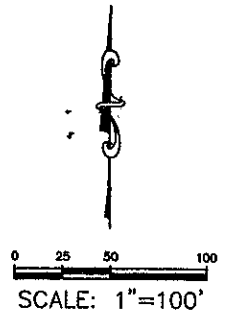
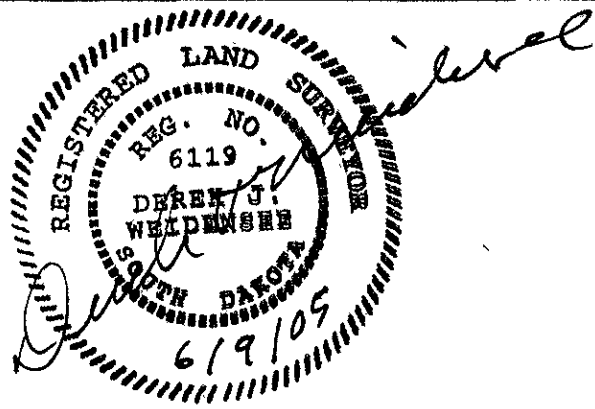
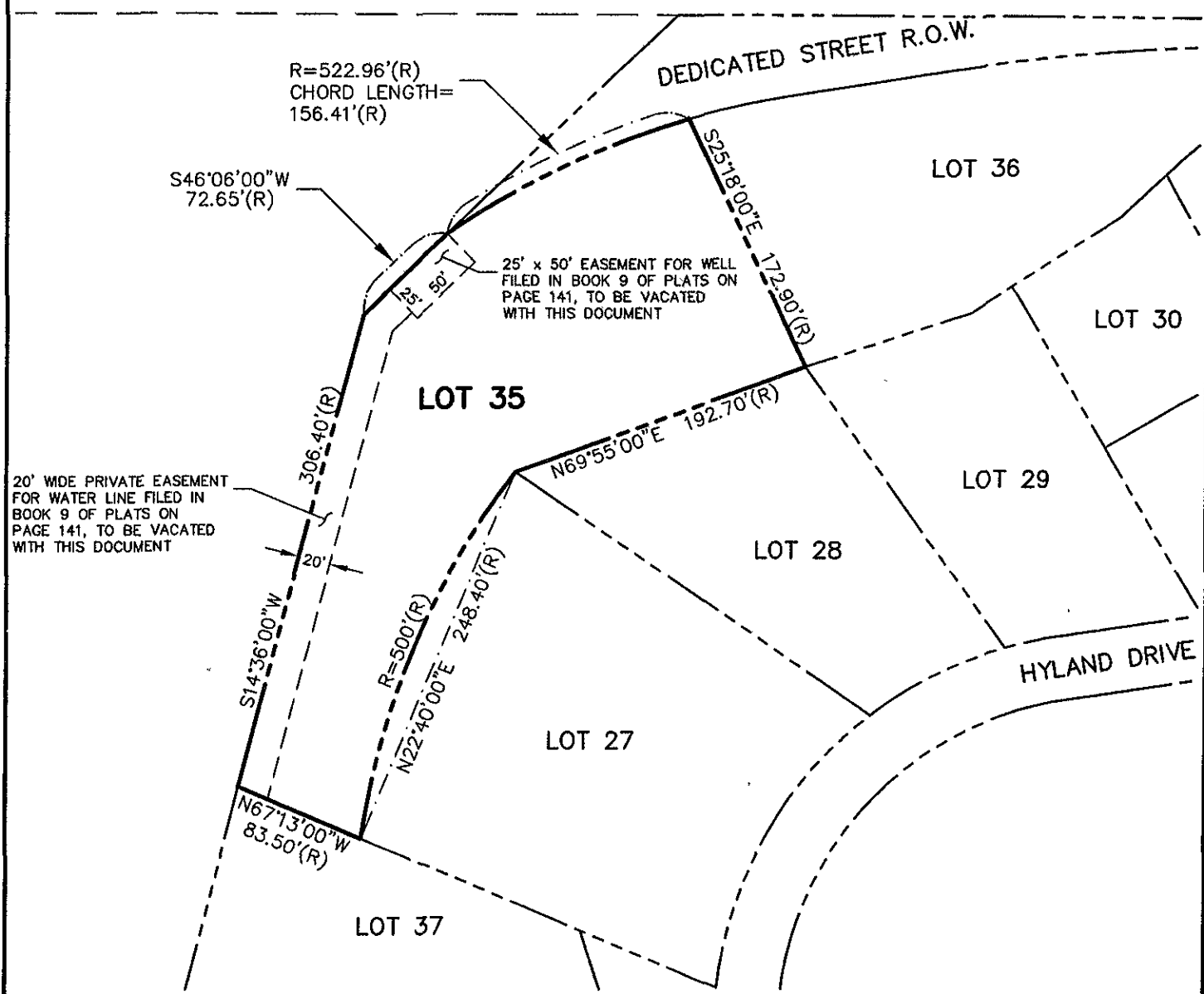


"EXHIBIT A"

05VE008



SECTION 2, T1N, R7E  
SECTION 11, T1N, R7E



**VACATE PRIVATE WATER LINE EASEMENT  
& PRIVATE WELL EASEMENT  
ON LOT 35 OF RIDGE PARK NO. 4 ADDENDUM  
RAPID CITY, SOUTH DAKOTA**

Job Number: 8848.02  
Date: JUNE 9, 2005  
Drawn By: KJS  
Checked By: DW  
Location  
NW1/4 NE1/4 SEC. 11,  
T1N, R7E, B1M

**F M G, Inc.**  
3700 Sturgis Road  
Rapid City, SD 57702-0317  
(605) 342-4105 FAX (605) 342-4222  
www.fmgengineering.com

JUNE 2005