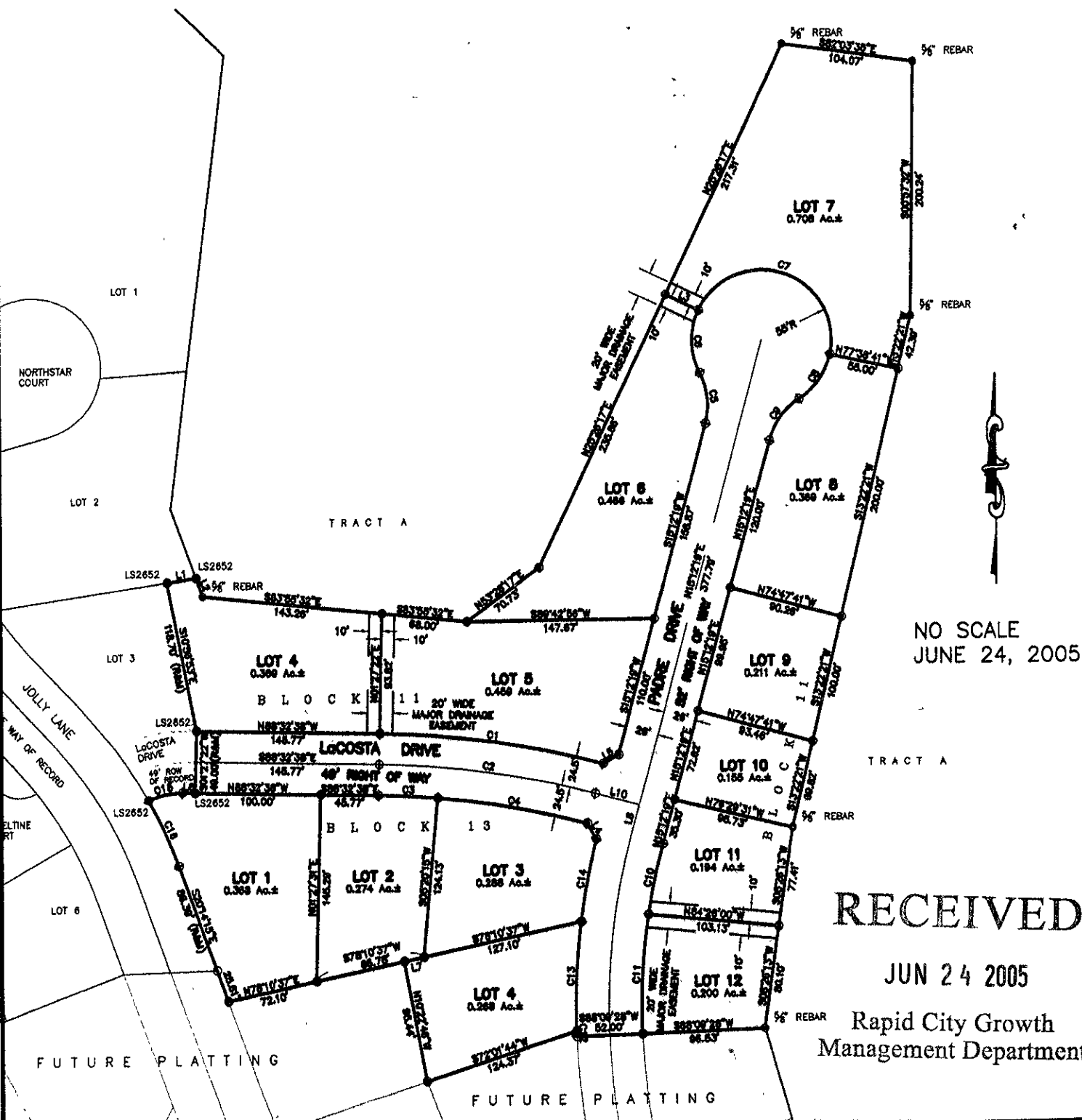


PLAT OF LOTS 4 THRU 12 OF BLOCK 11, AND LOTS 1 THRU 4 OF BLOCK 13, ELKS COUNTRY ESTATES

(FORMERLY A PORTION OF TRACT 1 OF THE E 1/2 OF SECTION 16, T1N, R8E, B.H.M.)
LOCATED IN THE NE 1/4 OF THE SE 1/4,
SECTION 16, T1N, R8E, B.H.M.,
RAPID CITY, PENNINGTON COUNTY, SOUTH DAKOTA



NO SCALE
JUNE 24, 2005

RECEIVED

JUN 24 2005

Rapid City Growth
Management Department

C:\DRAWINGS\1260-YR2004\PLAT\SHIT-LACOSTA.DWG. 8x11, 6/24/2005 11:44:43 AM