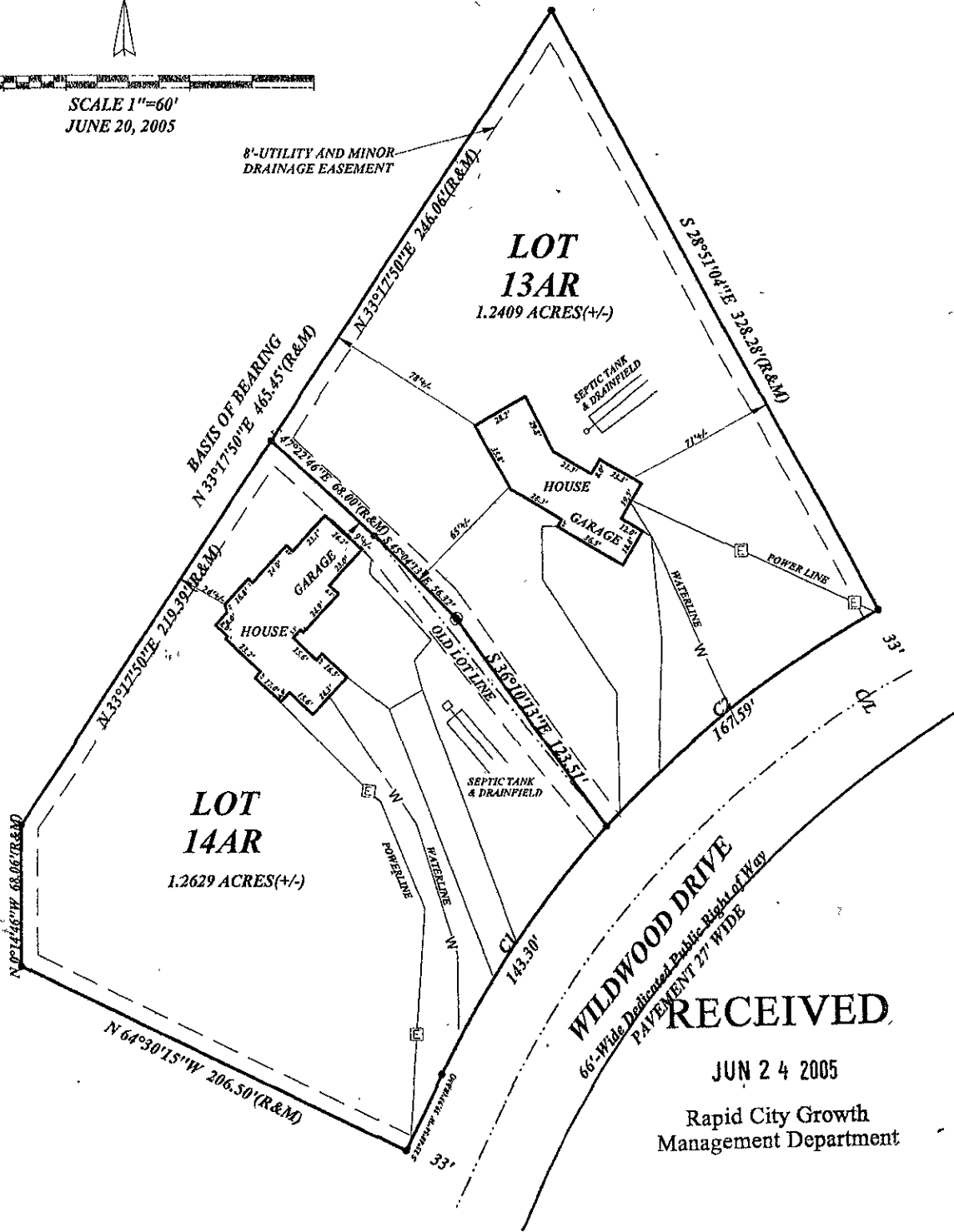




SITE PLAN FOR LOT 13AR AND 14AR IN BLOCK 3 OF WILDWOOD SUBDIVISION, RAPID CITY, PENNINGTON COUNTY, SOUTH DAKOTA.

SCALE 1"=60'
JUNE 20, 2005



WILDWOOD DRIVE
66'-Wide Dedicated Public Right of Way
PAVEMENT 27' WIDE

RECEIVED
JUN 24 2005
Rapid City Growth
Management Department

Curve	Delta Angle	Radius	Arc	Tangent	Chord	Chord Bearing
1	16°26'10.5"	499.530	143.298	72.145	142.808	N 33°40'11.0" E
2	19°13'20.4"	499.530	167.589	84.589	166.804	N 51°34'47.0" E