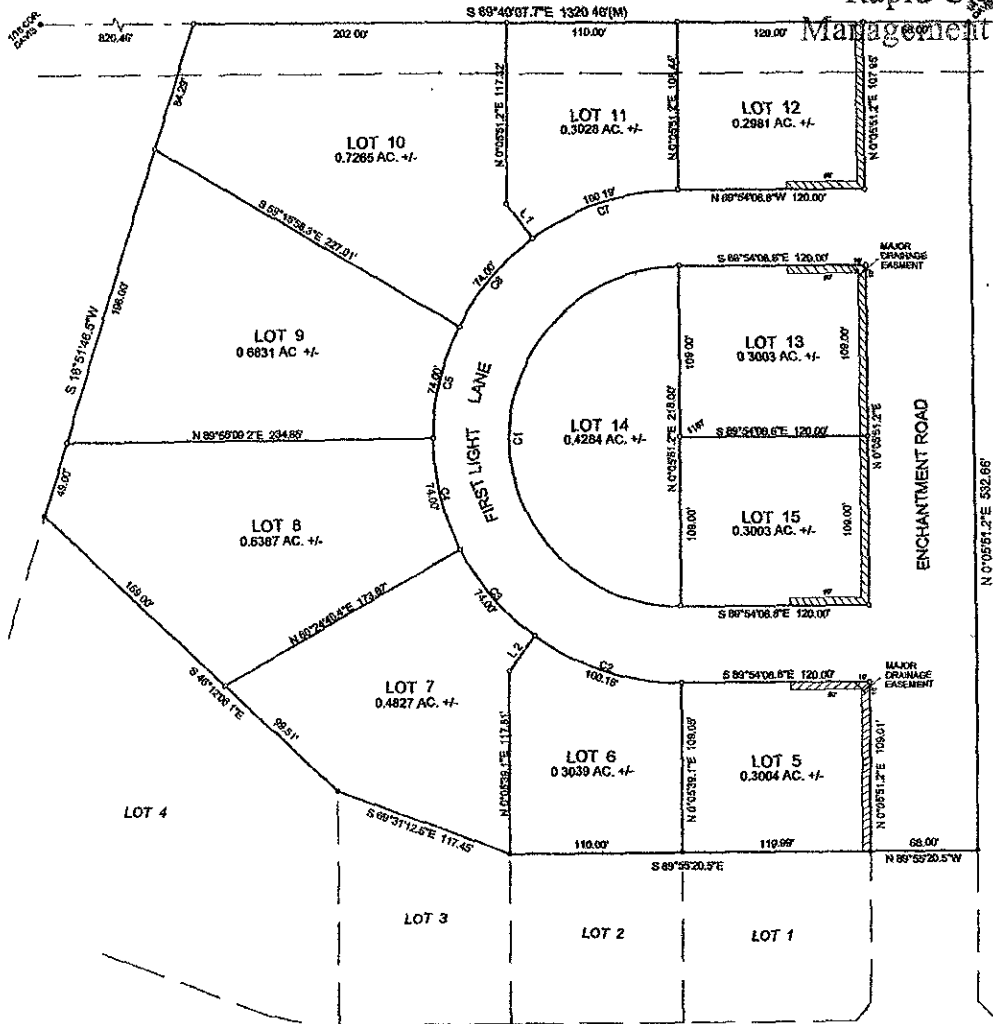


PLM SUBDIVISION
PLAT OF LOTS 5 THROUGH 15 IN BLOCK 2
LOCATED IN NE1/4NW1/4 OF SECTION 24, T1N, R7E, B.H.M.
RAPID CITY, PENNINGTON COUNTY, SOUTH DAKOTA

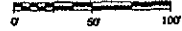
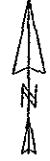
RECEIVED

JUN 10 2005

Rapid City Growth
 Management Department



- LEGEND**
- SET 5/8" REBAR WITH PLASTIC CAP MARKED "HANSON #6251"
 - FOUND SURVEY MONUMENT AS NOTED.
 - ▨▨▨▨▨▨ NON-ACCESS EASEMENT



Line	Bearing	Distance
1	S 39°13'50.8"E	27.87
2	S 36°25'40.1"W	27.87

Curve	Delta Angle	Radius	Arc	Tangent	Chord	Chord Bearing
1	189°02'03.0"	109.00	342.43	0.00	218.00	N 0°05'51.2"E
2	36°18'48.9"	158.00	100.18	51.84	86.52	N 71°43'14.4"W
3	26°50'05.0"	158.00	74.00	37.50	73.33	N 40°08'17.4"W
4	26°50'05.0"	158.00	74.00	37.86	73.33	N 13°18'12.4"W
5	26°50'05.0"	158.00	74.00	37.86	73.33	N 13°30'32.7"E
6	26°50'05.0"	158.00	74.00	37.89	73.33	N 49°03'31.7"E
7	36°18'48.9"	158.00	100.18	51.84	86.52	N 71°55'55.7"E

PREPARED BY:
HANSON SURVEYING & MAPPING
 832 HORACE MANN DRIVE
 RAPID CITY, SD 57701
 605-388-8652

JUNE 8, 2005

NOTES: 6" MINOR DRAINAGE & UTILITY EASEMENT ON THE INTERIOR SIDE OF ALL LOT LINES.

AREA DEDICATED TO PUBLIC RIGHT-OF-WAY = 1.5736 AC. +/-

PAGE 1 OF 2

ANY MAJOR DRAINAGE EASEMENTS SHOWN HEREON SHALL BE KEPT FREE OF ALL OBSTRUCTIONS INCLUDING BUT NOT LIMITED TO BUILDINGS, WALLS, FENCES, HEDGES TREES, AND SHRUBS. THESE EASEMENTS GRANT TO ALL PUBLIC AUTHORITIES THE RIGHT TO CONSTRUCT, OPERATE, MAINTAIN, INSPECT AND REPAIR SUCH IMPROVEMENTS AND STRUCTURES AS IT DEEMS EXPEDIENT TO FACILITATE DRAINAGE FROM ANY SOURCE.