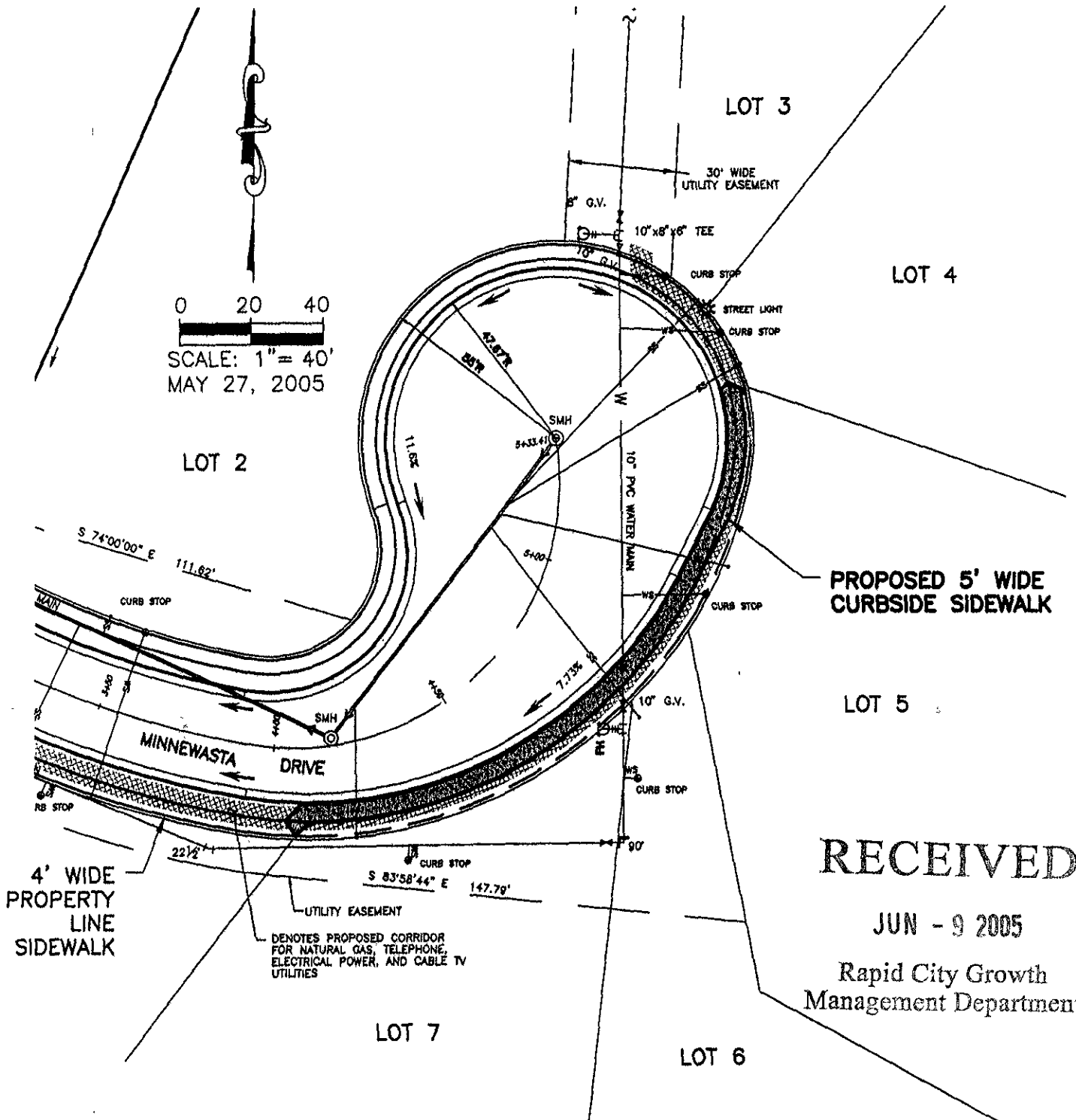


EXHIBIT "A"

PROPOSED CURBSIDE SIDEWALK ON A PORTION OF MINNEWASTA STREET
LOCATED ADJACENT TO LOTS 5, 6, & 7 OF BLOCK 1, SKYVIEW NORTH SUBDIVISION
IN THE SE 1/4 OF SECTION 10, T1N, R7E, B.H.M,
RAPID CITY, PENNINGTON COUNTY, SOUTH DAKOTA



RECEIVED
 JUN - 9 2005
 Rapid City Growth
 Management Department

C:\DRAWINGS\SCRATCH\EXH.DWG, 8x11, 5/27/2005 2:25:28 PM

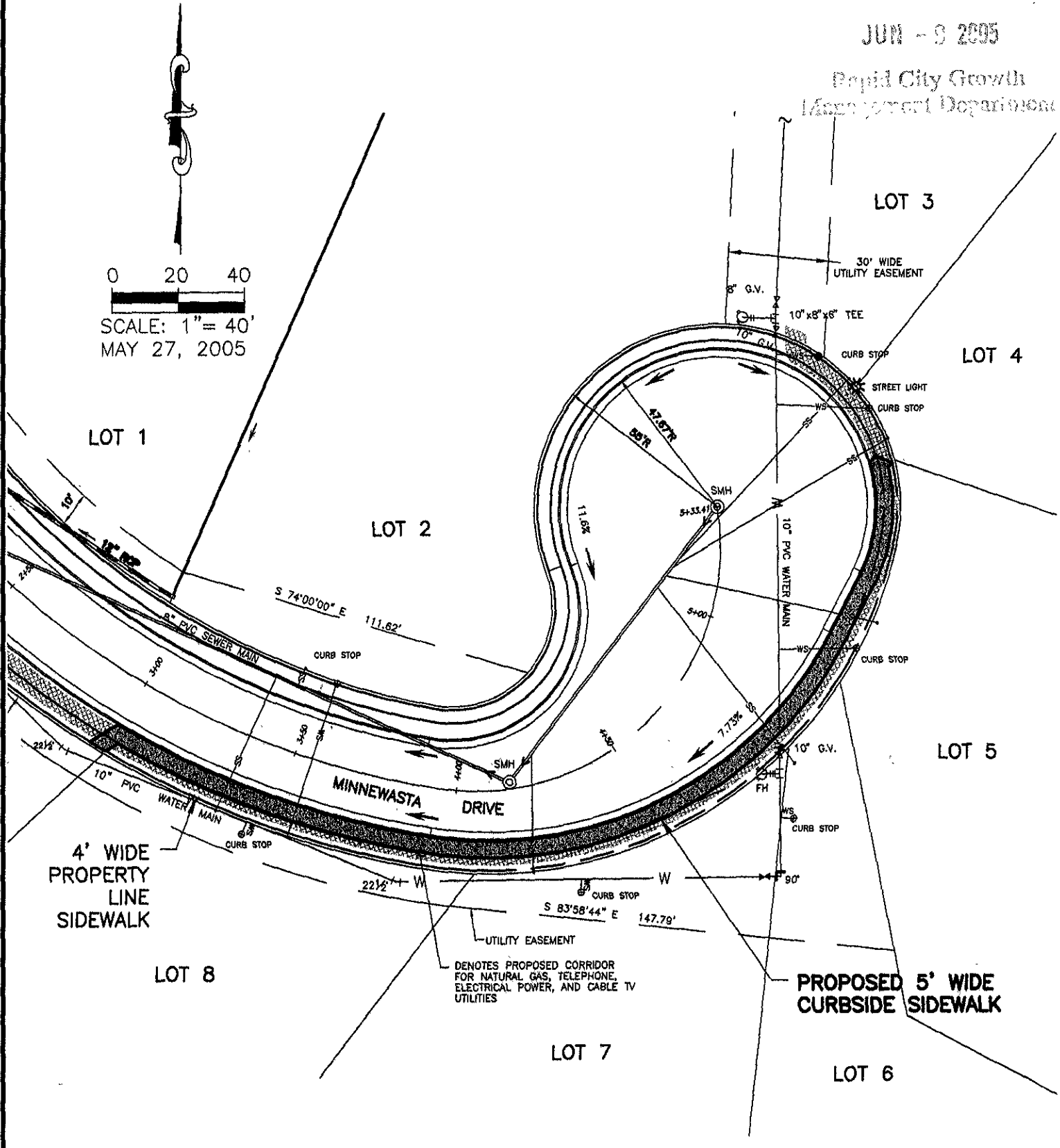
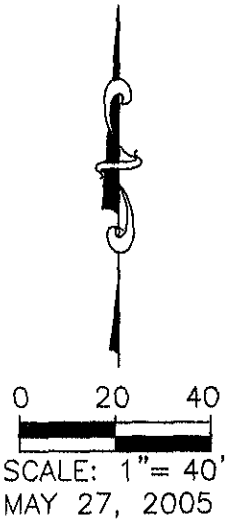
EXHIBIT "A"

PROPOSED CURBSIDE SIDEWALK ON A PORTION OF MINNEWASTA STREET
LOCATED ADJACENT TO LOTS 5, 6, 7, & 8 OF BLOCK 1, SKYVIEW NORTH SUBDIVISION
IN THE SE 1/4 OF SECTION 10, T1N, R7E, B.H.M.,
RAPID CITY, PENNINGTON COUNTY, SOUTH DAKOTA

RECEIVED

JUN - 9 2005

Rapid City Growth
Management Department



C:\DRAWINGS\3058\EXH.DWG. 8x11. 6/7/2005 3:41:26 PM