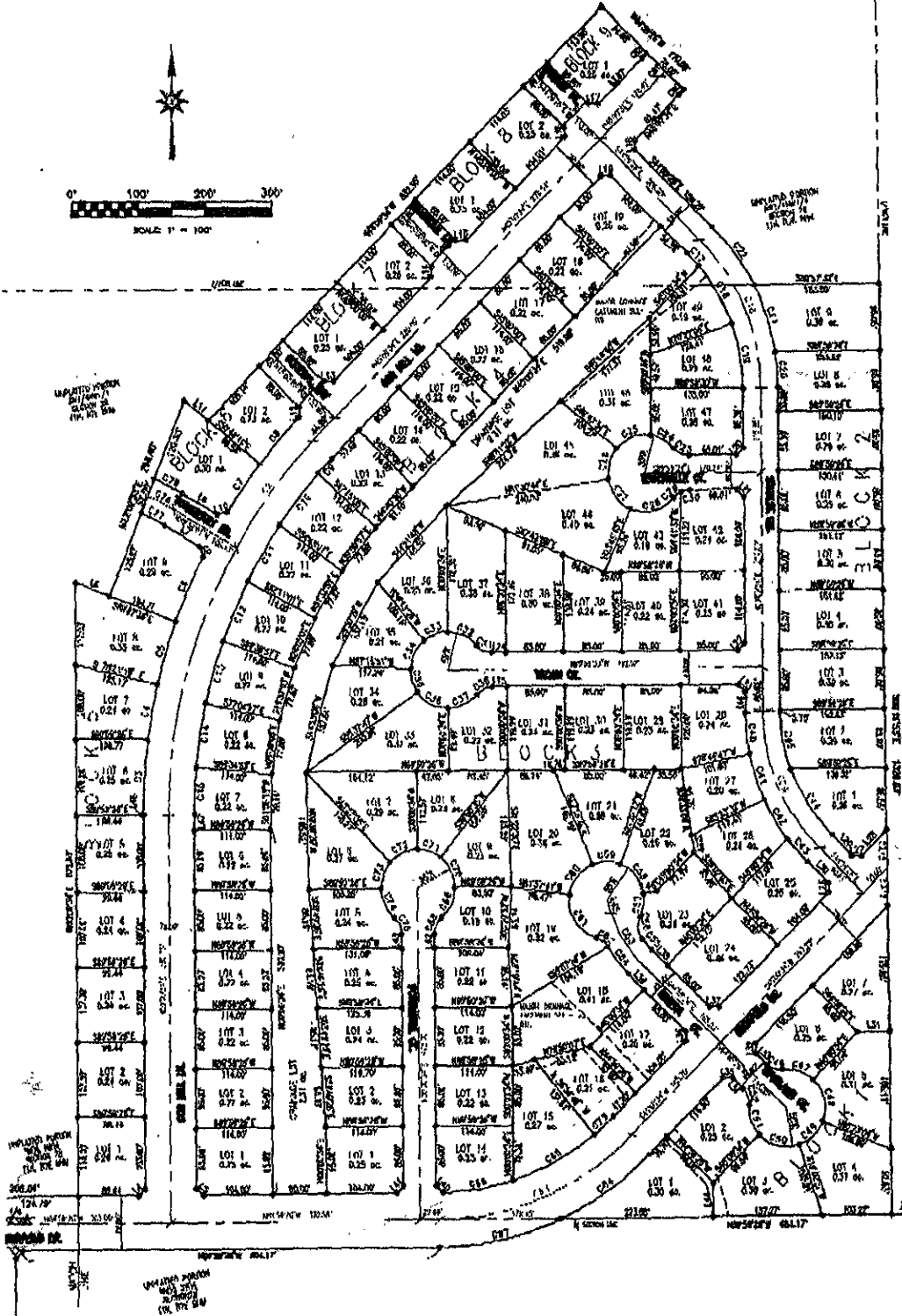
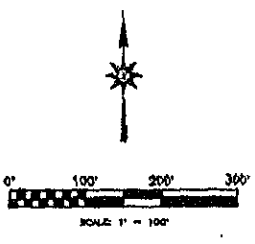


05RD004

**PLAN OF REDRUCK MEADOWS SUBDIVISION**  
 LOTS 1-19, BLOCK 1; LOTS 1-9, BLOCK 2; LOTS 1-49, BLOCK 3; LOTS 1-19,  
 BLOCK 4; LOTS 1-9, BLOCK 5; LOTS 1-2, BLOCK 6; LOTS 1-2, BLOCK 7;  
 LOTS 1-2, BLOCK 8; LOT 1, BLOCK 9; DEDICATED STREETS AND DRAINAGE LOT  
 LOCATED IN THE NW<sup>1</sup>/<sub>4</sub> NW<sup>1</sup>/<sub>4</sub>, SW<sup>1</sup>/<sub>4</sub> NW<sup>1</sup>/<sub>4</sub>, NW<sup>1</sup>/<sub>4</sub> SW<sup>1</sup>/<sub>4</sub> AND SW<sup>1</sup>/<sub>4</sub> SW<sup>1</sup>/<sub>4</sub>  
 OF SECTION 28, T1N, R7E, B.H.M. AND THE SE<sup>1</sup>/<sub>4</sub> NE<sup>1</sup>/<sub>4</sub>, NE<sup>1</sup>/<sub>4</sub> SE<sup>1</sup>/<sub>4</sub> AND A PORTION  
 OF LOT 2 LOCATED IN THE SE<sup>1</sup>/<sub>4</sub> SE<sup>1</sup>/<sub>4</sub> OF SECTION 29, T1N, R7E, B.H.M.,  
 CITY OF RAPID CITY, PENNINGTON COUNTY, SOUTH DAKOTA



**LEGEND.**

- DEPICTS 5/8" REBAR WITH SURVEY CAP MARKED "DISMAY"
- || MONUMENT FOUND SURVEY MONUMENT

**NOTES:**

1. MAJOR DRAINAGE AND UTILITY EASEMENTS ARE HEREBY ESTABLISHED BY THIS PLAN ON THE INTERIOR SIDE OF ALL LOT LINES AND ROOM-TO-ROOM (RTR) WHERE MAJOR DRAINAGE EXTENTS ARE LOCATED
2. TOTAL PLATTED AREA: 40.70 ACRES; LOTS: 10.50 ACRES; DEDICATED PUBLIC RIGHT-OF-WAY: 12.50 ACRES
3. ANY MAJOR DRAINAGE EASEMENTS SHOWN HEREON SHALL BE KEPT FREE OF ALL OBSTRUCTIONS INCLUDING BUT NOT LIMITED TO BUILDINGS, WALLS, FENCES, TREES, POSTS, AND SERVICES. THESE EASEMENTS GRANT TO ALL PUBLIC AUTHORITIES THE RIGHT TO CONSTRUCT, MAINTAIN, REPAIR AND IMPROVE SUCH IMPROVEMENTS AND STRUCTURES AS IT DEEMS EXPEDIENT TO FACILITATE DRAINAGE FROM ANY SOURCE
4. NEW ACCESS EASEMENTS ARE HEREBY ESTABLISHED ALONG THE FIRST FIFTY FEET OF CORNER LOTS OR AS INDICATED HEREON.



**PREPARED BY:**  
**ARLENTH & ASSOCIATES**

382 MAIN STREET  
 DEADWOOD, SD 57732  
 605-578-1637

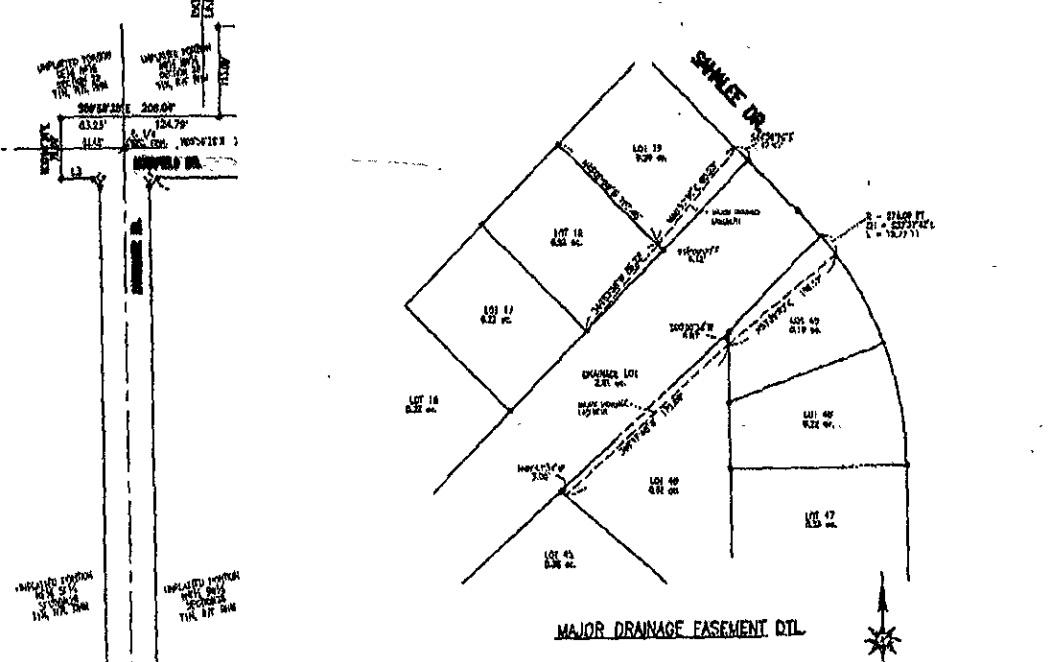
**JOB NO.**  
 03-0054

**DATE:** FEBRUARY 2006  
**SCALE:** 1" = 100'  
**DRAWN:**

**APPROVED:** JMA  
**DWG. NO.:** 03-0054-006

PREPARED FOR:  
 DEAN BERGE INTERMEDIATE, INC.  
 640 HANSEN CITY STREET, SUITE 1  
 RAPID CITY, SOUTH DAKOTA 57701  
 (605) 641-6655

6. 2005 - 2:41 PM ... OF MEADOWS SUBDIVISION ... CITY OF RAPID CITY, PENNINGTON COUNTY, SOUTH DAKOTA



LINE TABLE

Table with 4 columns: NO., DIRECTION, DIST., and NO. DIRECTION DIST. listing survey points and bearings.

ANGULAR TABLE

Table with 10 columns: NO., BEARING, SLEW ANGLE, ANG. L., TANGENT, CHORD DIR., CHORD L., BEAR., BEAR. ANGLE, ANG. L., TANGENT, CHORD DIR., CHORD L. listing angular measurements.

