

05PL112

PLAT OF

LOT BR, SCHOENHARD SUBDIVISION LOT 6R, MANN SUBDIVISION

(formerly Lot B of Schoenhard Subdivision, Lot 6 of Mann Subdivision,
a portion of Vacated Section Line Right-of-Way)

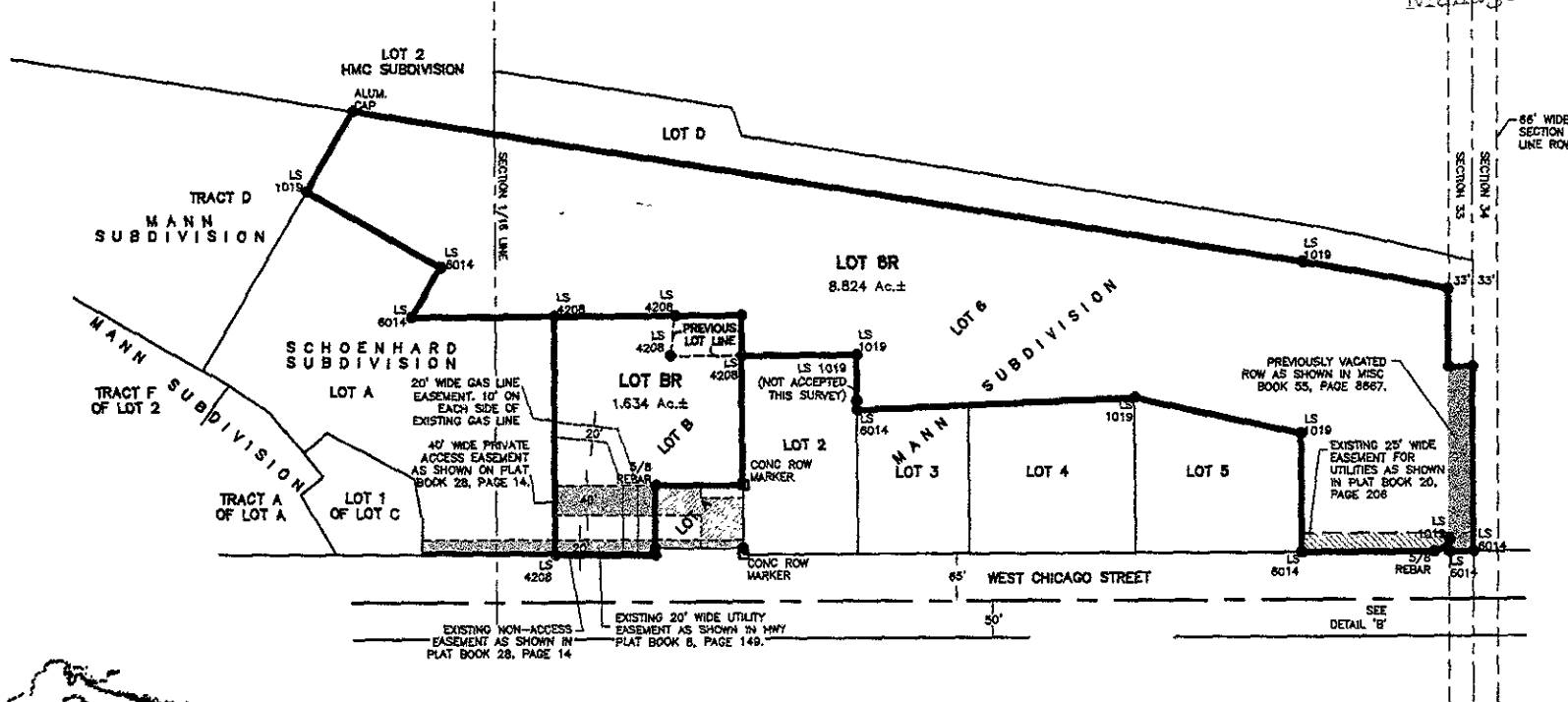
LOCATED IN THE N1/2 OF SE1/4,
SECTION 33, T2N, R7E, BHM

RAPID CITY, PENNINGTON COUNTY, SOUTH DAKOTA

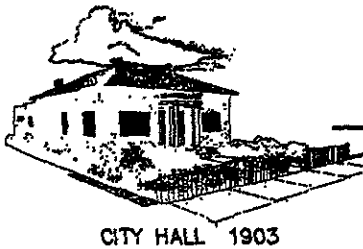
RECEIVED

JUN 10 2005

Rapid City Growth
Management Department



JUNE 6, 2005
SCALE = N.T.S



CITY HALL 1903

Renner Associates, LLC.

616 Sixth St. * Rapid City, SD 57701 * 605/721-7310

FAX: 605/721-7313 * E-MAIL: Gary@RennerAssoc.com

* Spearfish, SD 605/717-0016 *

ADP #2104