

SURVEY PLAT OF

LOT 1A AND LOT 1B OF BLOCK 1 OF AUBURN HILLS SUBDIVISION;
(FORMERLY LOT 1 OF BLOCK 1 OF AUBURN HILLS SUBDIVISION)
LOCATED IN THE NE1/4 SW1/4 OF SECTION 13,
TOWNSHIP 2 NORTH, RANGE 7 EAST OF THE BLACK HILLS MERIDIAN,
RAPID CITY, PENNINGTON COUNTY, SOUTH DAKOTA.

JUNE, 2005

SITE

ELLSWORTH AIR FORCE BASE

MEADE CO
PENNINGTON CO



RECEIVED

JUN 10 2005

Rapid City Growth Management Department

SCALE: 1" = 5000'

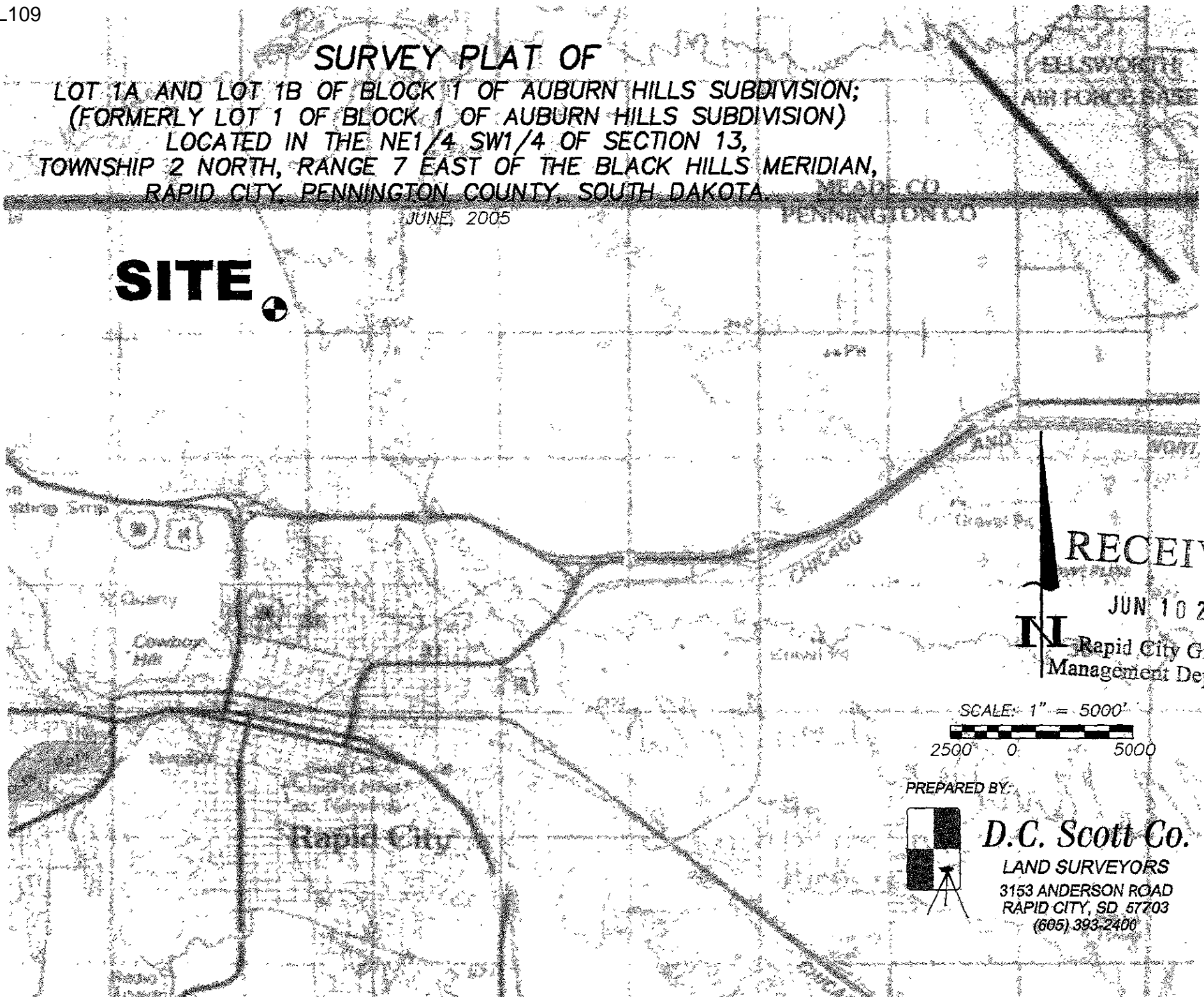


PREPARED BY:



D.C. Scott Co.

LAND SURVEYORS
3153 ANDERSON ROAD
RAPID CITY, SD 57703
(605) 393-2400



SURVEY PLAT OF

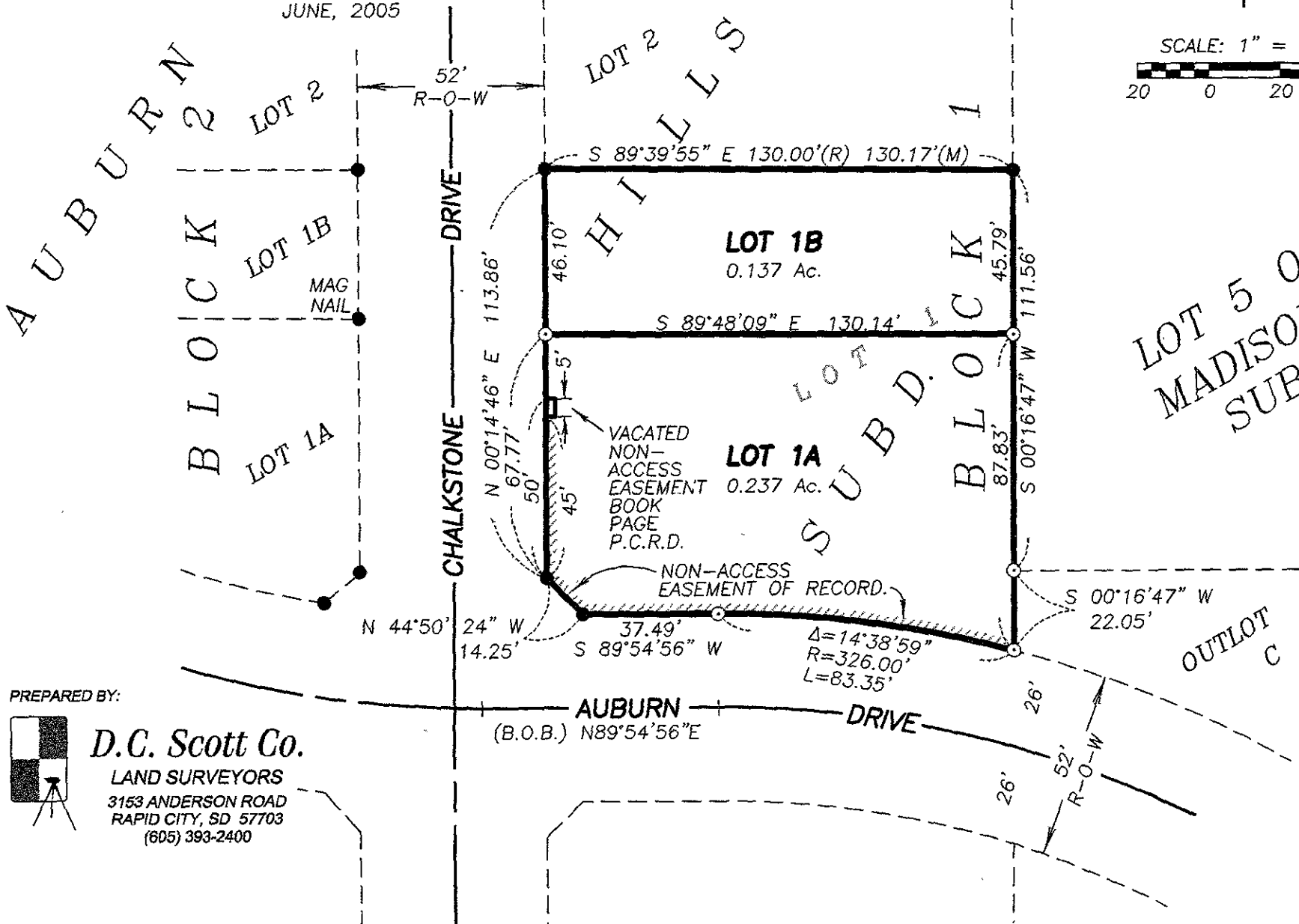
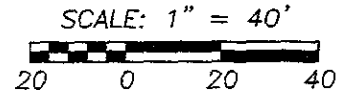
LOT 1A AND LOT 1B OF BLOCK 1 OF AUBURN HILLS;
 (FORMERLY LOT 1 OF BLOCK 1 OF AUBURN HILLS SUBDIVISION)
 LOCATED IN THE NE1/4 SW1/4 OF SECTION 13,
 TOWNSHIP 2 NORTH, RANGE 7 EAST OF THE BLACK HILLS MERIDIAN,
 RAPID CITY, PENNINGTON COUNTY, SOUTH DAKOTA.

JUNE, 2005

RECEIVED

JUN 10 2005

Rapid City Growth
 Management Department



PREPARED BY:



D.C. Scott Co.

LAND SURVEYORS
 3153 ANDERSON ROAD
 RAPID CITY, SD 57703
 (605) 393-2400