

EXHIBIT "A"

MAP OF

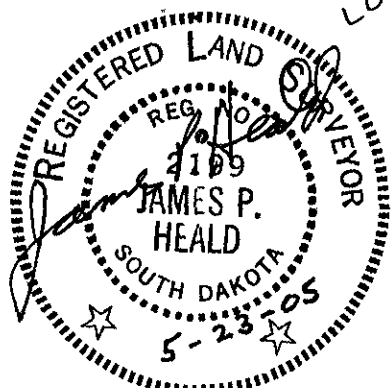
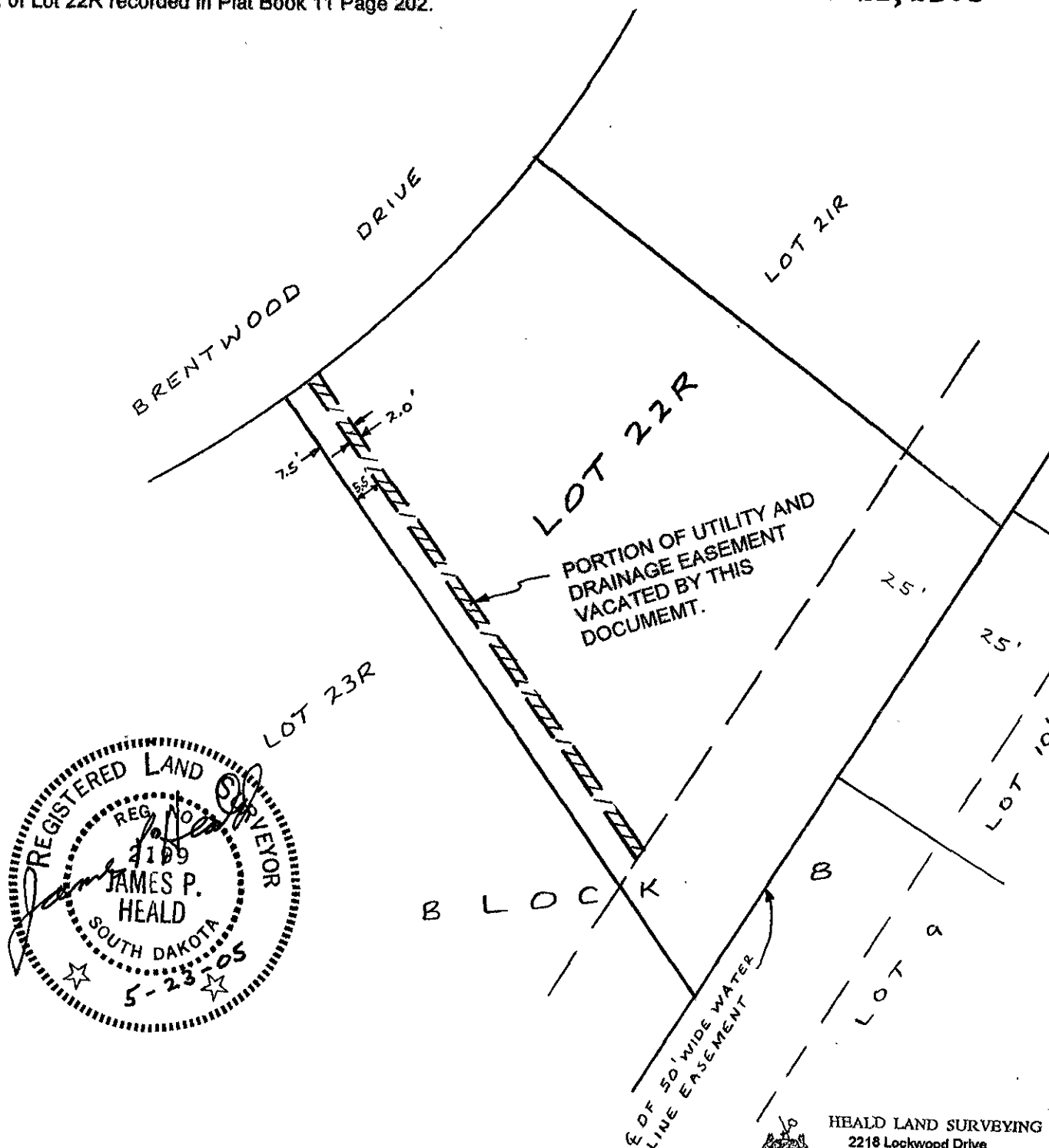
VACATION OF A PORTION OF 7.5' WIDE UTILITY AND DRAINAGE EASEMENT ON LOT 22R OF BLOCK 8 OF KNOLLWOOD HEIGHTS NO. 3 REVISED

located in SW¼ of Section 30, T2N, R8E, BHM, Rapid City, Pennington County, South Dakota.

Plat of Lot 22R recorded in Plat Book 11 Page 202.



SCALE 1" = 30'  
MAY 23, 2005



HEALD LAND SURVEYING  
 2218 Lockwood Drive  
 Rapid City, SD 57702-4266  
 (605) 343-1820 Fax 721-1336

