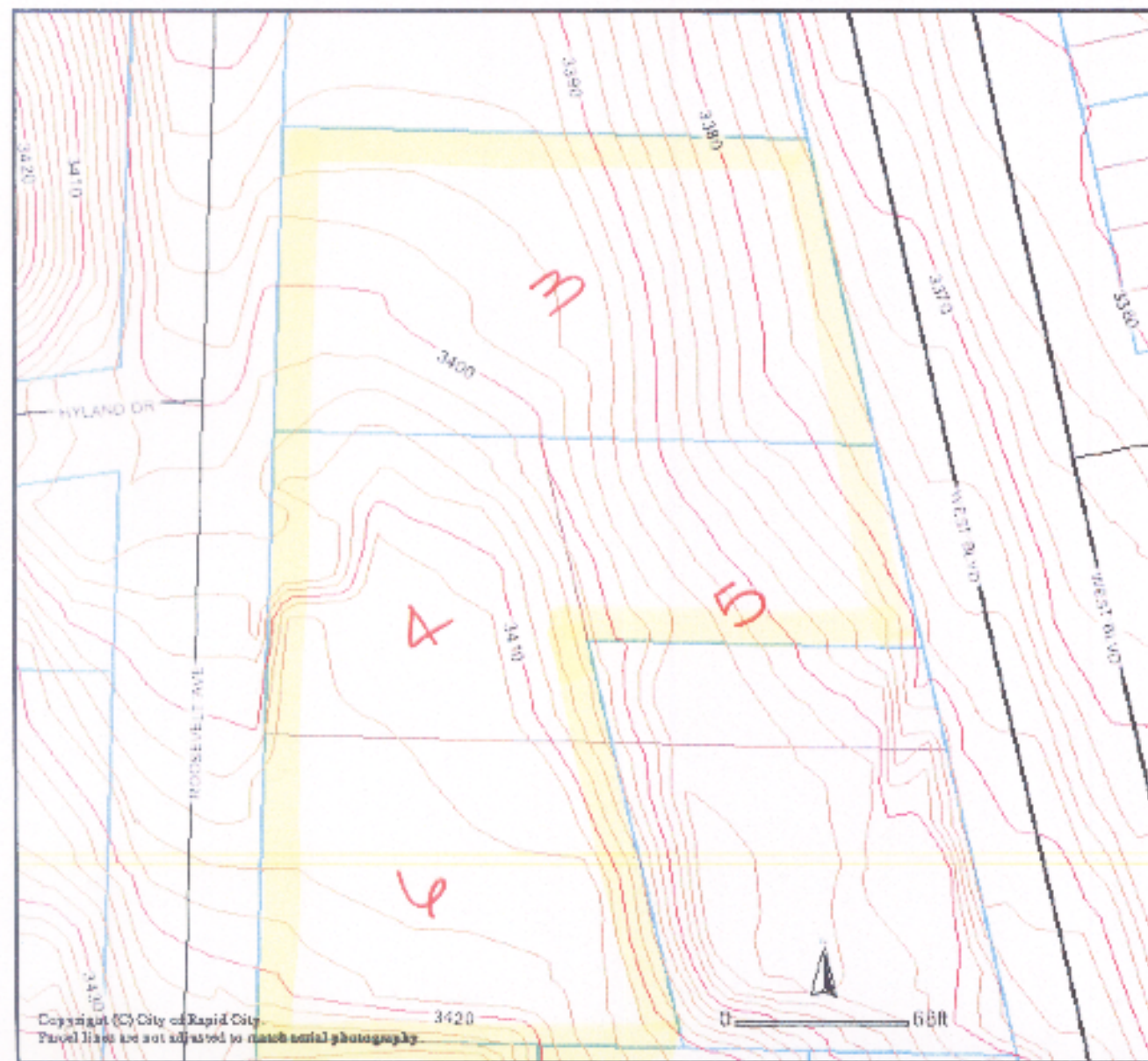


Pennington County - Rapid City GIS



	Print	Color
City of Rapid City	[Symbol]	[Symbol]
Pennington County	[Symbol]	[Symbol]
Hyland Dr	[Symbol]	[Symbol]
Roosevelt Ave	[Symbol]	[Symbol]
West Dr	[Symbol]	[Symbol]
...

RECEIVED

MAY 27 2005

Rapid City Growth Management Department

DISCLAIMER

This GIS data is provided as is, without warranty, any representation of accuracy, timeliness or completeness. The burden for determining accuracy, completeness, timeliness, merchantability and fitness for the appropriateness for use is solely on the requester. Rapid City and Pennington County make no warranty, express or implied, as to the use of the data. The implied warranties of merchantability or fitness for a particular purpose are specifically disclaimed. The requester acknowledges and accepts the limitations of the data, including the fact that in this document and as a condition of use, no guarantee, correction and update. This document does not represent a top survey of the land. There are no restrictions on distribution of printed Rapid City/Pennington County maps, other than the City/Rapid City copyright/notice be legible on the print. The User agrees to recognize and honor in perpetuity the copyrights, and other proprietary claims for the GIS Product Files established produced by the City of Rapid City or the vendors furnishing software to the City of Rapid City.

Copyright (C) City of Rapid City
Parcel lines are not adjusted to match aerial photography.