

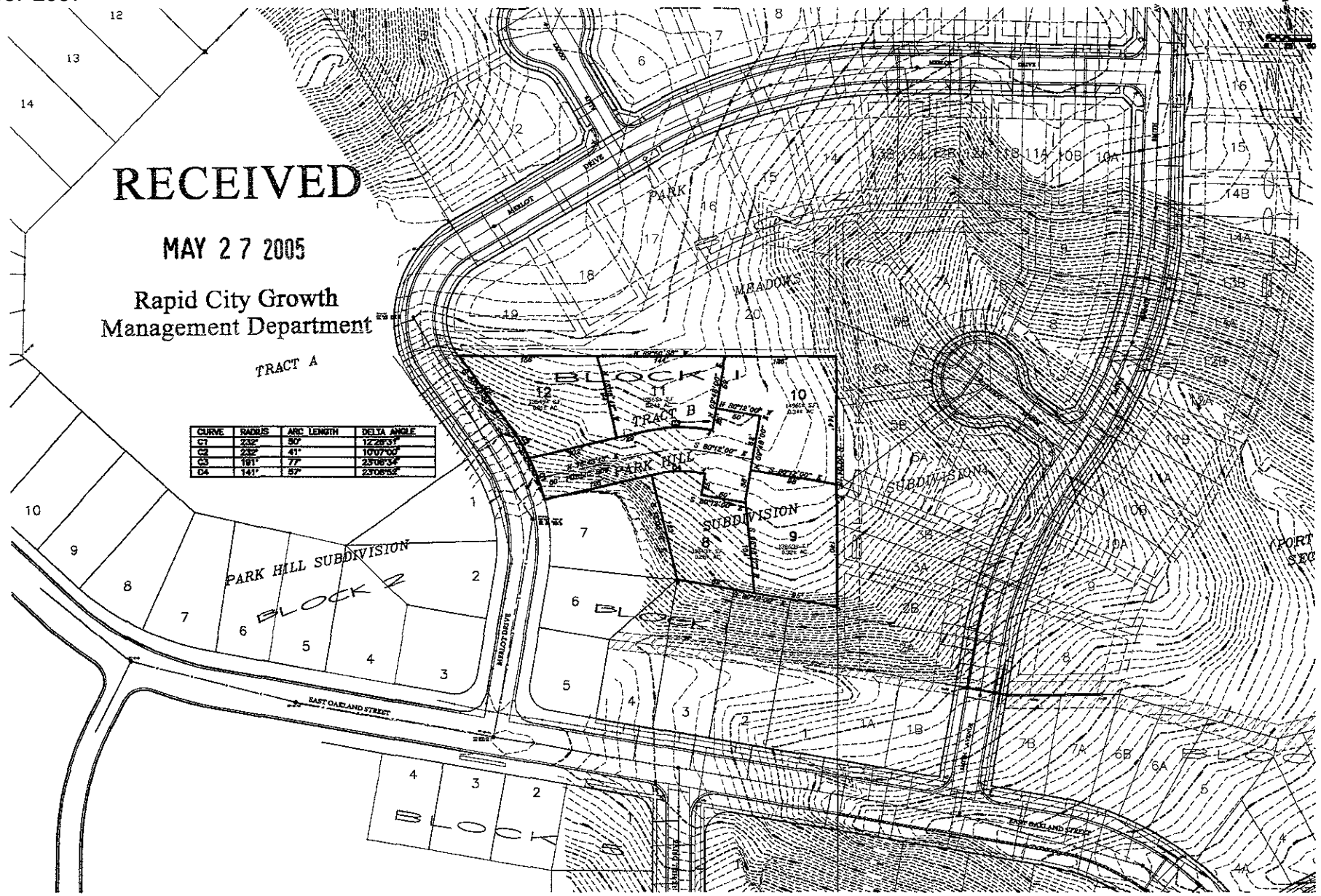
RECEIVED

MAY 27 2005

Rapid City Growth  
Management Department

TRACT A

CURVE	RADIUS	ARC LENGTH	DELTA ANGLE
C1	232'	30'	12.2833°
C2	232'	41'	10.0700°
C3	181'	77'	23.0633°
C4	141'	57'	23.0633°



1800 West Fulham Street  
Rapid City, SD 57702  
Phone: (605) 341-7884  
Fax: (605) 341-7884  
www.celec.com



DESIGNED	BY	DATE
Detailed	LR	5/19/05
CHECKED	GM	
APPROVED		

LAYOUT PLAN

PROJECT: LOTS 8, 9, 10, 11, AND 12 OF BLOCK 1, PARK HILL SUBDIVISION, FORMERLY TRACT B, PARK HILL SUBDIVISION, RAPID CITY, SOUTH DAKOTA