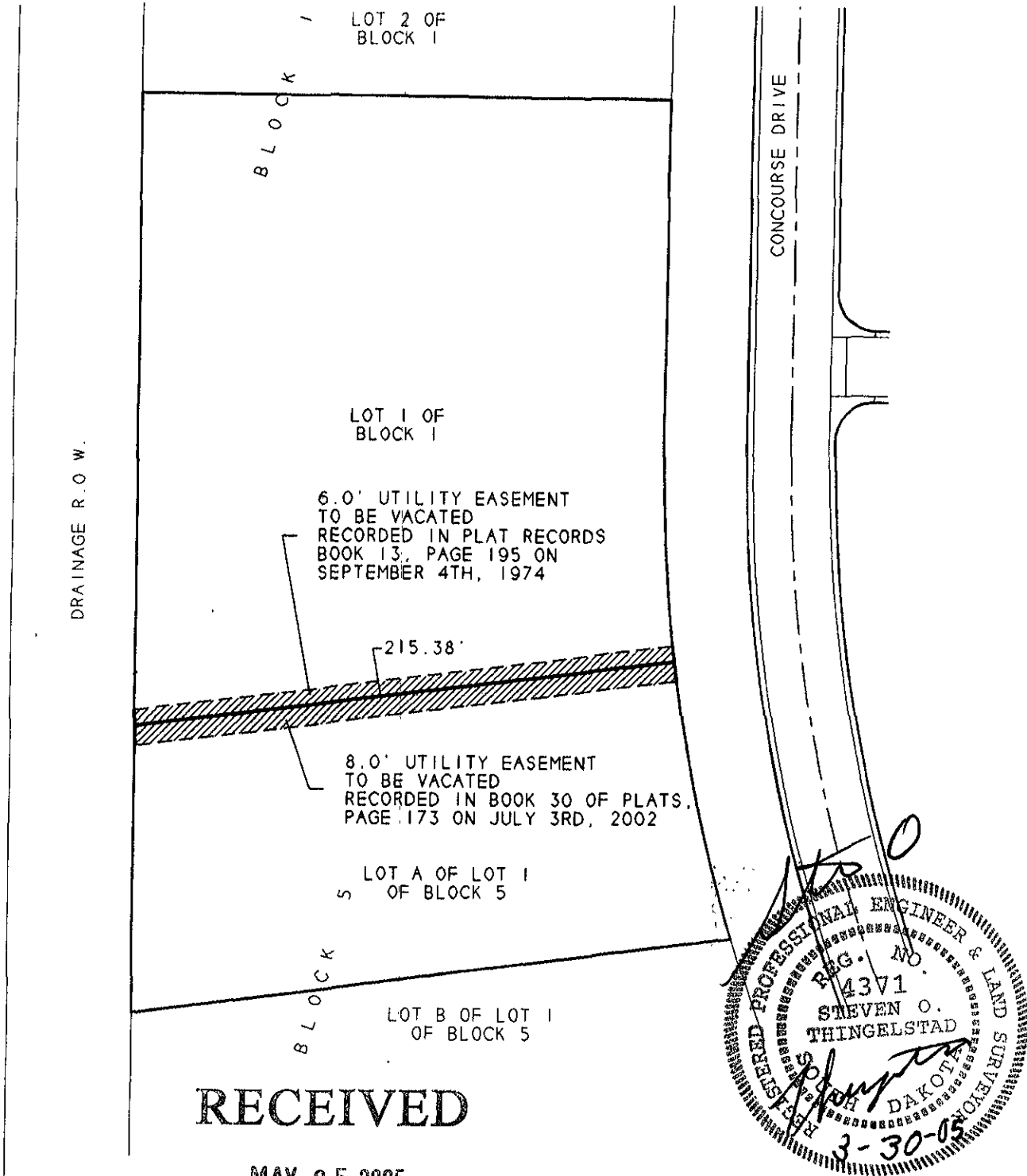


EXHIBIT "A"  
OF  
VACATION OF UTILITY EASEMENTS ON  
LOT 1 OF BLOCK 1 & LOT A OF LOT 1 OF BLOCK 5  
OF RUSHMORE REGIONAL INDUSTRIAL PARK,  
SECTION 4, T1N, R8E, BHM, RAPID CITY,  
PENNINGTON COUNTY, SOUTH DAKOTA



SCALE: 1" = 60'  
MARCH 30, 2005



RECEIVED

MAY 05 2005

Rapid City Growth  
Management Department

PREPARED BY: STEVEN O. THINGELSTAD  
BRITTON ENGINEERING & LAND SURVEYING, INC.  
11750 NORTH HIGHWAY 79, BLACK HAWK, SD 57718  
TELEPHONE: (605) 716-7988