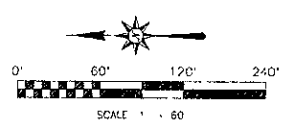
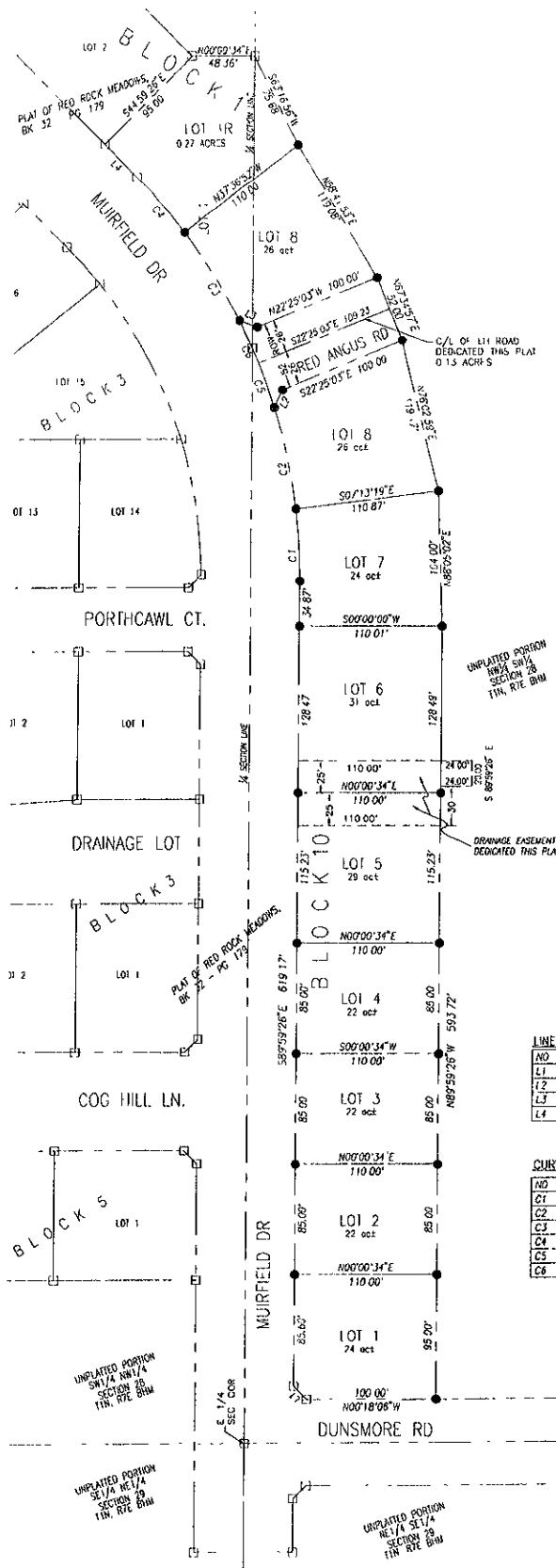


101 1R AND 101 8, BLOCK 1, LOTS 1 THRU 8, BLOCK 10,  
AND DEDICATED STREET,  
FORMERLY LOT 1, BLOCK 1 OF RLD ROCK MEADOWS SUBDIVISION,  
LOCATED IN THE SW 1/4 NW 1/4 OF SECTION 28, T1N, R7E, B7M,  
AND BEING A PORTION OF THE UNPLATTED PORTION OF THE NW 1/4 SW 1/4 OF  
SECTION 28, T1N, R7E, B7M, CITY OF RAPID CITY,  
PENNINGTON COUNTY, SOUTH DAKOTA



- LEGEND**
- DLYOFFS SET 5/8" REBAR WITH SURVEY CAP MARKED "H53977"
  - DENOTES FOUND SURVEY MONUMENT

- NOTES**
- MINOR DRAINAGE AND UTILITY EASEMENTS ARE HEREBY ESTABLISHED BY WAY ON THE BULLHORN SIDE OF ALL LOT LINES AND RIGHT-OF-WAY (EXCEPT WHERE MAJOR DRAINAGE EASEMENTS ARE LOCATED)
  - TOTAL PLATTED AREA, 7.66 ACRES, LOTS 2, 5, 6 ACRES, DEDICATED PUBLIC RIGHT-OF-WAY 0.13 ACRES
  - ANY MAJOR DRAINAGE EASEMENTS SHOWN HEREON SHALL BE KEPT FREE OF ALL OBSTRUCTIONS INCLUDING BUT NOT LIMITED TO BUILDINGS, WALLS, FENCES, HEDGES, TRELS, AND SHRUBS THESE EASEMENTS GRANT TO ALL PUBLIC AUTHORITIES THE RIGHT TO CONSTRUCT, OPERATE, MAINTAIN, INSPECT AND REPAIR SUCH IMPROVEMENTS AND STRUCTURES AS IT DEEMS EXPEDIENT TO FACILITATE DRAINAGE FROM ANY SOURCE.
  - NON-ACCESS EASEMENTS ARE HEREBY ESTABLISHED ALONG THE FIRST FIFTY FEET OF CORNER LOTS OR AS INDICATED HEREON
  - ALL ACRES ARE ASSUMED TO HAVE THE WORDS MORE OR LESS FOLLOWING.

**LINE TABLE**

NO	DIRECTION	DISTANCE
L1	N44°51'44"E	74.10'
L2	N65°23'28"W	14.63'
L3	N20°33'15"W	14.63'
L4	N45°00'34"E	35.70'

**CURVE TABLE**

NO	RADIUS	DELTA ANGLE	ARC L	TANGENT	CHORD	DIRECTION	CHORD L
C1	438.00	07°13'52"	85.28	27.68	146°23'38"E	80.04	56.74
C2	438.00	10°29'03"	80.15	40.19	117°32'10"E	80.04	56.74
C3	438.00	10°29'09"	80.16	40.19	167°37'43"E	80.05	56.75
C4	438.00	04°22'34"	56.39	28.23	N44°51'51"E	56.35	36.01
C5	438.00	04°42'41"	36.02	18.02	N69°56'18"W	36.01	24.00
C6	438.00	04°42'41"	36.02	18.02	N65°15'37"E	36.01	24.00

RECEIVED

MAY 11 2005

Rapid City Growth Management Department