

SURVEY PLAT OF

LOT A OF GRAVATT SUBDIVISION,
(FORMERLY LOT A OF GRAVATT SUBDIVISION)

DEDICATED ANDERSON ROAD RIGHT-OF-WAY AND DEDICATED DUNN ROAD RIGHT-OF-WAY,
AND VACATED 33' RIGHT-OF-WAY
LOCATED IN THE SW1/4 NW1/4 AND IN THE N1/2 SW1/4 OF SECTION 24,
TOWNSHIP 1 NORTH, RANGE 8 EAST OF THE BLACK HILLS MERIDIAN,

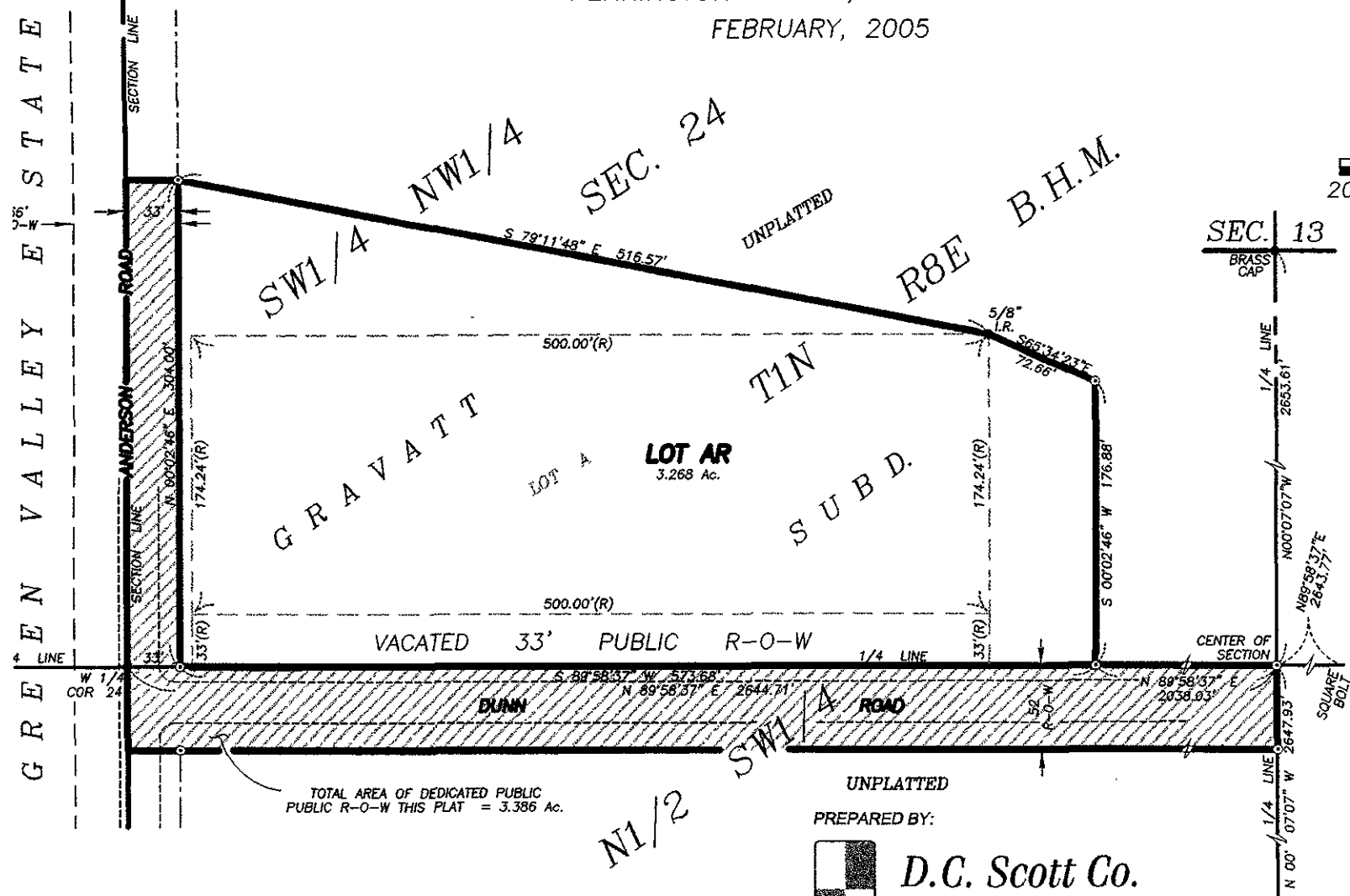
FEBRUARY, 2005

SECTION LINE
14
13
SECTION CORNER
23

GREEN VALLEY ESTATES



SCALE: 1" = 60'
20 0 20 40 60



TOTAL AREA OF DEDICATED PUBLIC
PUBLIC R-O-W THIS PLAT = 3.386 Ac.

UNPLATTED
PREPARED BY:



D.C. Scott Co.
LAND SURVEYORS
3153 ANDERSON ROAD
RAPID CITY, SD 57703
(605) 393-2400

SEC. 13
BRASS CAP

1/4 LINE
2653.61'
N00°07'07\" W
2643.77'
N89°58'37\" E
2643.77'
SQUARE BOLT
1/4 LINE
N00°07'07\" W
2647.93'
MAGNAIL

SEC. 25