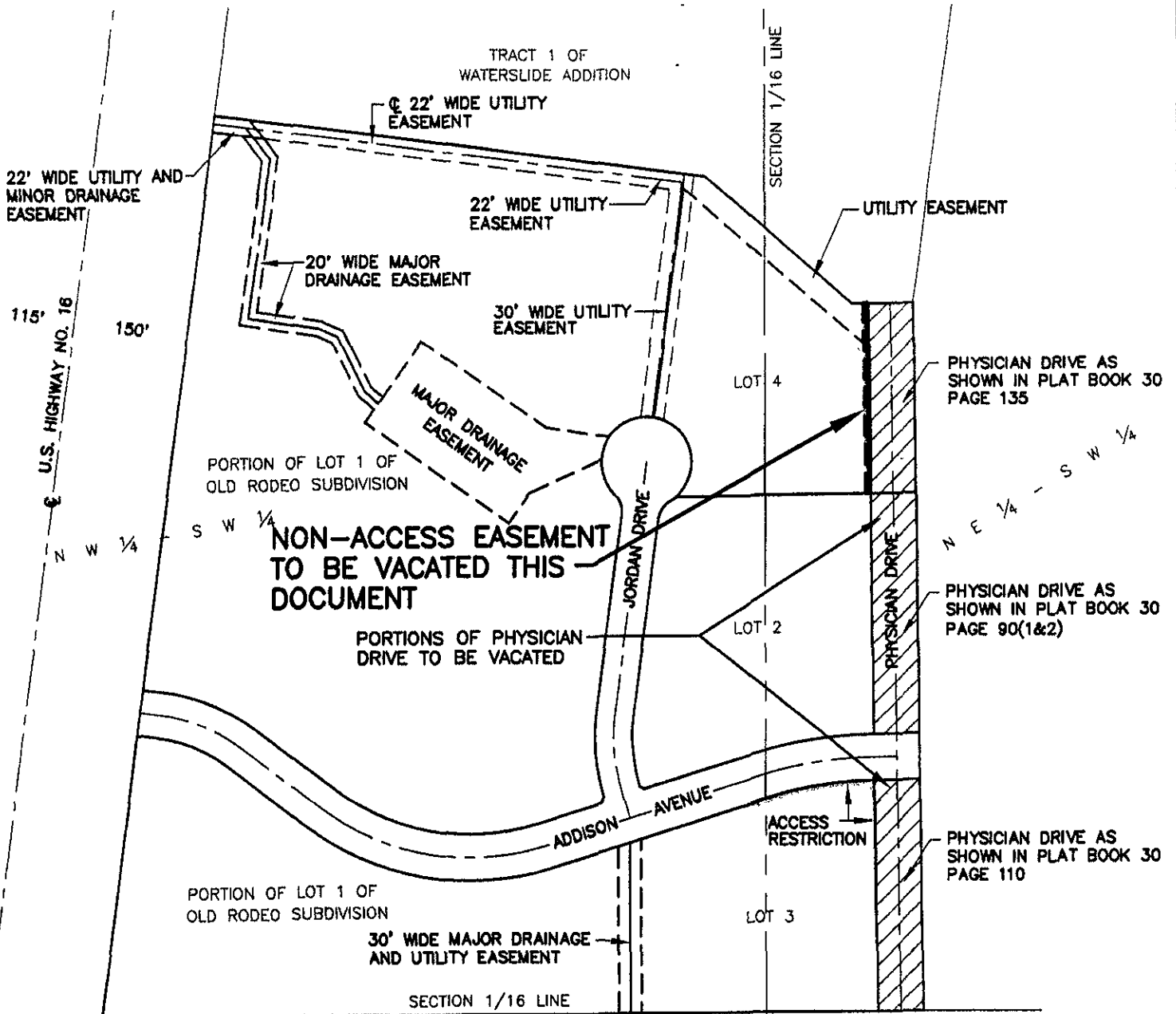


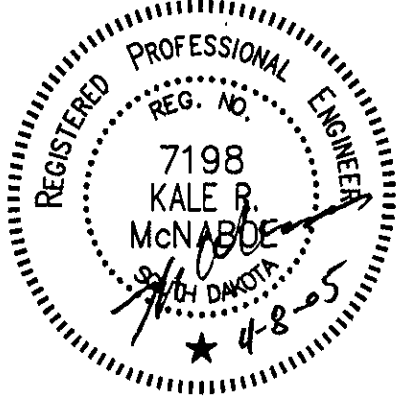
EXHIBIT 'A' VACATION OF NON-ACCESS EASEMENT

LOT 4 OF OLD RODEO SUBDIVISION

LOCATED IN THE NE 1/4 OF THE SW 1/4
SECTION 26, T1N, R7E, BHM,
RAPID CITY, PENNINGTON COUNTY, SOUTH DAKOTA



**NON-ACCESS EASEMENT
TO BE VACATED THIS
DOCUMENT**



RECEIVED

APR 09 2005

Rapid City Growth
Management Department

MARCH 15, 2005



SCALE: 1" = 200'

LOT B OF THE SW 1/4 OF THE SW 1/4 OF SECTION 26