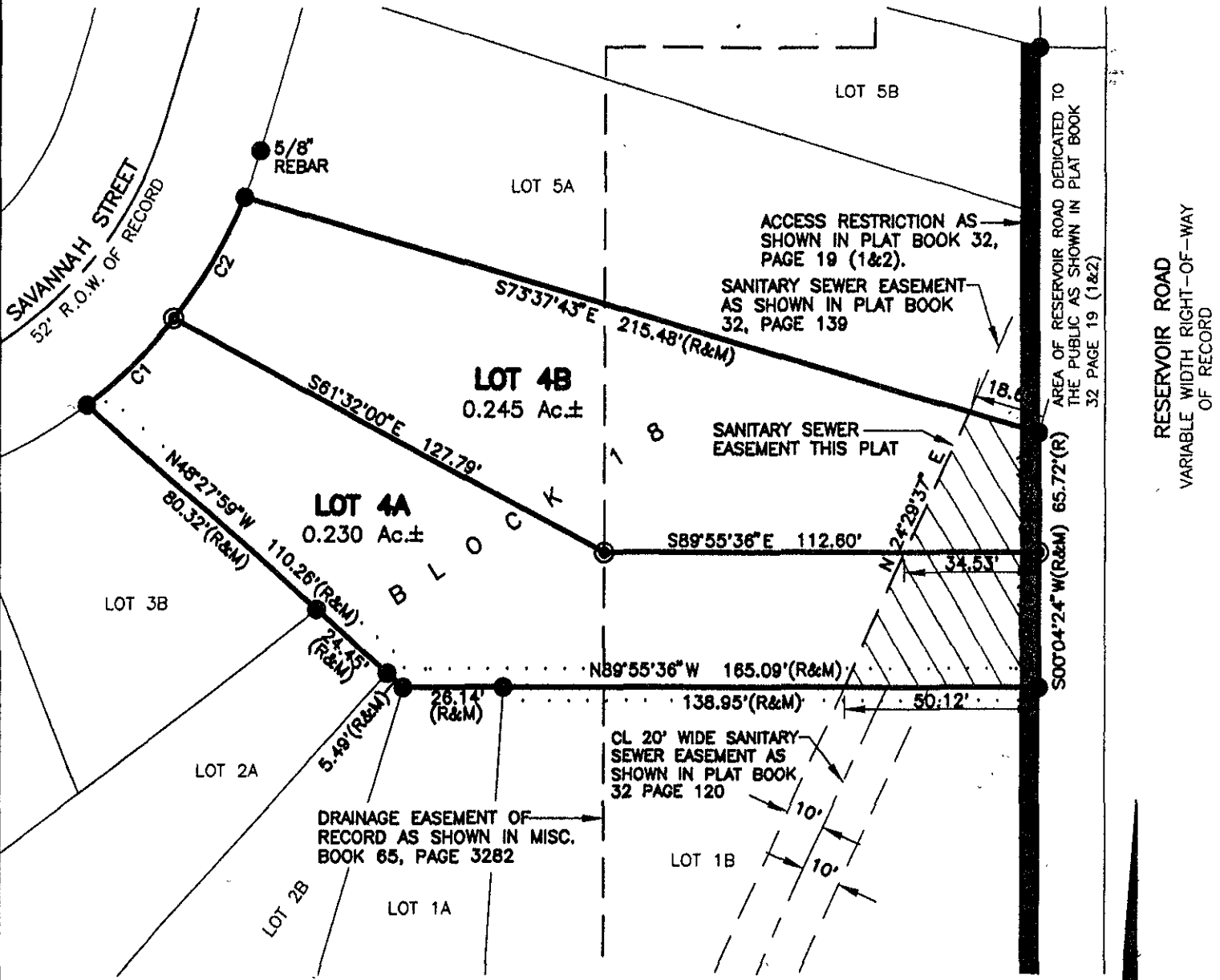


PLAT OF LOTS 4A AND 4B OF BLOCK 18, TRAILWOOD VILLAGE

(formerly Lot 4 of Block 18, Trailwood Village)
LOCATED IN THE SE¹/₄ OF THE SE¹/₄,
SECTION 10, T1N, R8E, B.H.M.,
PENNINGTON COUNTY, SOUTH DAKOTA



CURVE	LENGTH	RADIUS	DELTA	CHORD BEARING	CHORD DISTANCE
C1	31.76	126.00	14°26'36"	N45°51'20" E	31.68
C2	36.16	126.00	16°26'29"	N30°24'47" E	36.02
C1&C2(R)	67.92	126.00	30°53'05"	N37°38'05" E	67.10

RECEIVED

APR 0 2005

APRIL 5, 2005

Rapid City Growth
Management Department

