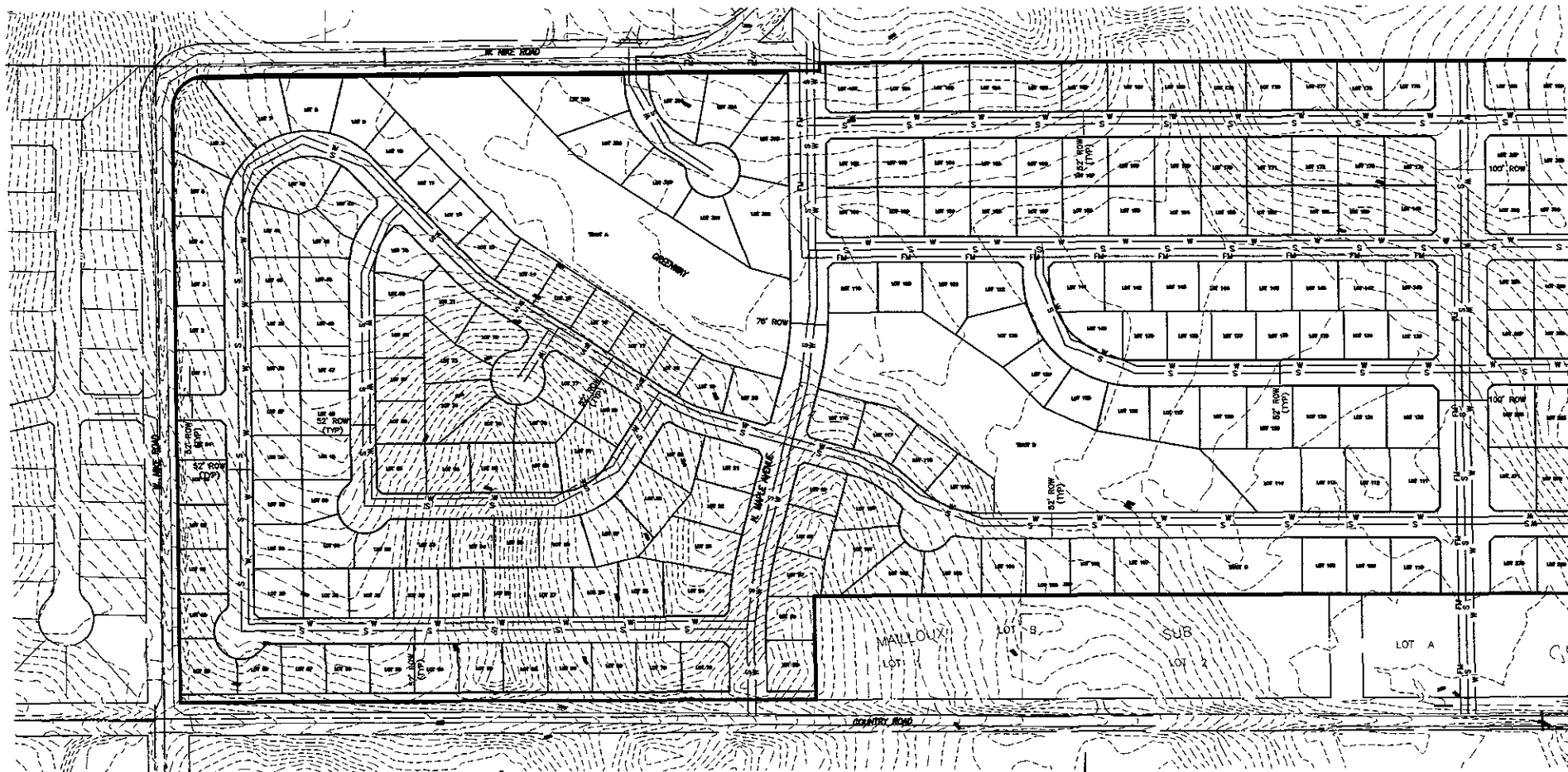


FREELAND MEADOWS SUBDIVISION

GOVERNMENT LOT 4 LESS ROW, THE UNPLATTED PORTION OF SE1/4SW1/4, AND THE UNPLATTED PORTION OF S1/2SE1/4,
ALL IN SECTION 18, TOWNSHIP 2 NORTH, RANGE 8 EAST, BLACK HILLS MERIDIAN,
PENNINGTON COUNTY, SOUTH DAKOTA



DEVELOPMENT INFORMATION

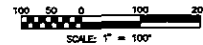
SUBMITTAL: LAYOUT PLAT
SUBDIVISION: FREELAND MEADOWS
CURRENT OWNER: SPF PROPERTIES AND KMF PROPERTIES
22426 PIONEER TRAIL
RAPID CITY, SD 57701
DEVELOPMENT ENGINEER: DREAM DESIGN INTERNATIONAL, INC.
EXISTING ZONING: GENERAL AGRICULTURE
PROPOSED ZONING: LOW DENSITY RESIDENTIAL
TOTAL SITE AREA: 146.8 ACRES

LOW DENSITY RESIDENTIAL AREA

TOTAL RESIDENTIAL AREA: 142.4 ACRES
TOTAL YIELD: 395 LOTS
GROSS DENSITY: 2.8 LOTS PER ACRE
RIGHT-OF-WAY AREA: 30.9 ACRES
AVERAGE LOT SIZE: 0.24 ACRES
MINIMUM LOT SIZE: 0.18 ACRES
LAND USE: LOW DENSITY RESIDENTIAL

SITE DATA

ELEVATION RANGE: 3166 TO 3286
WATER SYSTEM: CITY OF RAPID CITY
STATIC WATER EL: 3550
SANITARY SEWER SYSTEM: CITY OF RAPID CITY
PRO LIFT STATION EL: 3166



PROJECT: FREELAND MEADOWS SUBDIVISION
PROJECT NO: 05-0368
DATE: APRIL 29, 2005
SHEET 1 OF 2



D.D.I.
DREAM DESIGN INTERNATIONAL, INC.
PROFESSIONAL STRUCTURAL & CIVIL ENGINEERING CONSULTANTS
521 MARSH CITY ST., SUITE 4, RAPID CITY, SD 57701
PH. 605-348-0538 FAX. 605-348-0545 EMAIL. engineers@dreamdesigninc.com