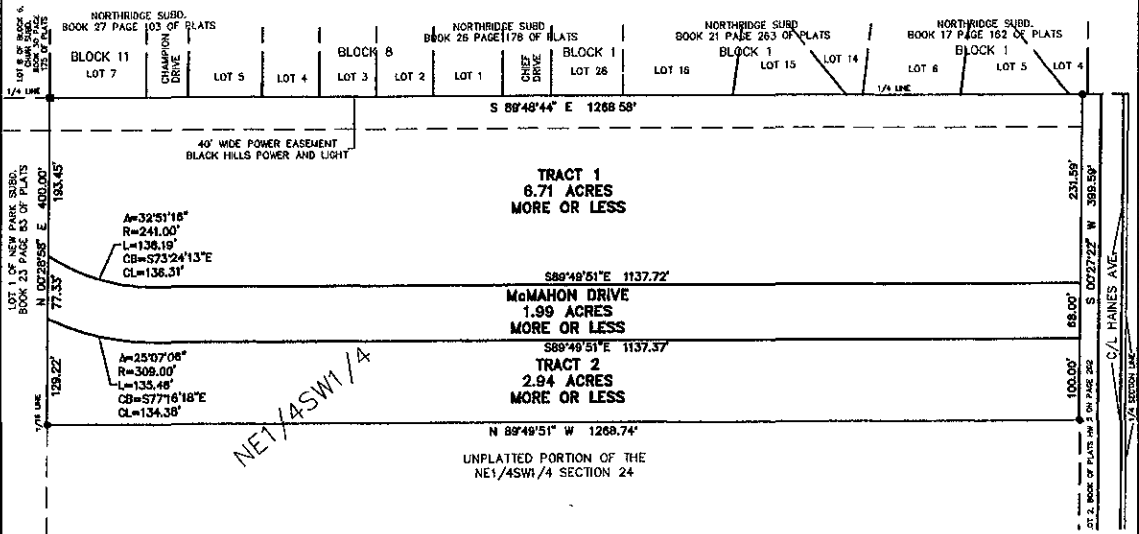


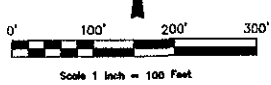
**PLAT OF MCMAHON SUBDIVISION  
TRACT 1 AND 2, AND DEDICATED R.O.W.  
LOCATED IN THE NE1/4SW1/4 OF SECTION 24, T2N, R7E, B.H.M., CITY OF RAPID CITY,  
PENNINGTON COUNTY, SOUTH DAKOTA**



**RECEIVED**

MAR 24 2005

Rapid City Growth  
Management Department



**LEGEND**

- Denotes set 5/8" rebar with survey cap marked "ARLETH 3977"
- Denotes Found Survey Monument

**NOTES**

1. MINOR DRAINAGE AND UTILITY EASEMENTS ARE HEREBY ESTABLISHED IF MADE ON THE INTERIOR SIDE OF ALL LOT LINES AND RIGHT-OF-WAY (EXCEPT WHERE MAJOR DRAINAGE EASEMENTS ARE LOCATED)
2. TOTAL PLATTED AREA: 11.64 ACRES;  
LOTS: 1.99 ACRES;  
DEDICATED R.O.W.: 0.65 ACRES;
3. ANY MAJOR DRAINAGE EASEMENT SHOWN HEREON SHALL BE KEPT FREE OF ALL OBSTRUCTIONS INCLUDING BUT NOT LIMITED TO BUILDINGS, WALLS, FENCES, HEDGES, TREES, AND SHRUBS. THESE EASEMENTS GRANT TO ALL PUBLIC AUTHORITIES THE RIGHT TO CONSTRUCT, OPERATE, MAINTAIN, INSPECT AND REPAIR SUCH IMPROVEMENTS AND STRUCTURES AS IT DEEMS EXPEDIENT TO FACILITATE DRAINAGE FROM ANY SOURCE.
4. NON-ACCESS EASEMENTS ARE HEREBY ESTABLISHED ALONG THE FIRST FIFTY FEET OF CORNER LOTS OR AS INDICATED HEREON.
5. ADCREAGE SHOWN ON LOTS INCLUDE EASEMENTS.

Prepared for:  
Dream Design International, Inc.  
528 Kansas City Street, Suite 4  
Rapid City, SD 57701  
605/348-0536

<p><b>PREPARED BY: ARLETH &amp; ASSOCIATES</b></p>	<p>382 MAIN STREET DEADWOOD, SD 57732 605-578-1637</p>	<p>JDB NO. 6904</p>	<p>DATE: MARCH 18, 2005</p>	<p>APPROVED: JMA</p>
			<p>SCALE: 1" = 100'</p>	<p>DWG. 6904-PREL DWG</p>