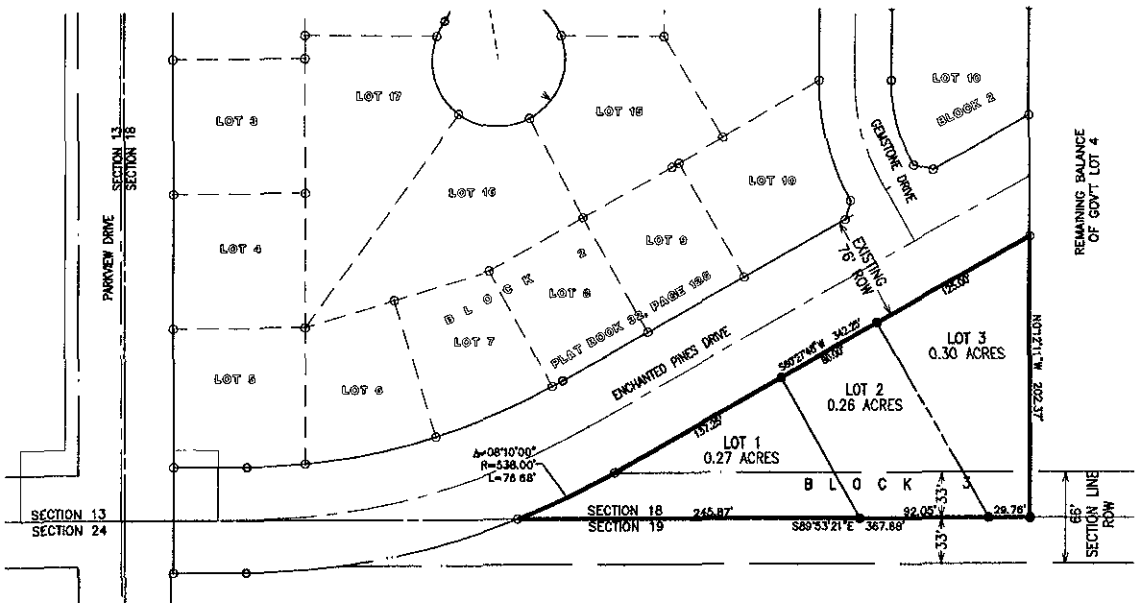
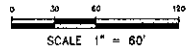


# STONE RIDGE SUBDIVISION LOTS 1 THROUGH 3, BLOCK 3

FORMERLY THE UNPLATTED BALANCE OF THE W $\frac{1}{2}$  OF THE S $\frac{1}{2}$  OF GOVERNMENT LOT 4  
LOCATED IN THE SW $\frac{1}{4}$  OF THE SW $\frac{1}{4}$   
OF SECTION 18, T1N, R8E, BHM  
PENNINGTON COUNTY, RAPID CITY, SOUTH DAKOTA



# RECEIVED

## MAR 11 2005

### Rapid City Growth Management Department

#### LEGEND

- DENOTES SET 5/8" REBAR WITH SURVEY CAP MARKED "RLS 3977"
- DENOTES FOUND SURVEY MONUMENT

#### NOTES:

- MINOR DRAINAGE AND UTILITY EASEMENTS ARE HEREBY ESTABLISHED 8' WIDE ON THE INTERIOR SIDE OF ALL LOT LINES AND RIGHT-OF-WAY. (EXCEPT WHERE MAJOR DRAINAGE EASEMENTS ARE LOCATED)
- TOTAL PLATTED AREA: 0.83 ACRES  
TOTAL AREA OF LOTS: 0.83 ACRES  
TOTAL R.O.W. AREA: 0.00 ACRES
- ANY MAJOR DRAINAGE EASEMENT SHOWN HEREON SHALL BE KEPT FREE OF ALL OBSTRUCTIONS INCLUDING BUT NOT LIMITED TO BUILDINGS, WALLS, FENCES, HEDGES, TREES, AND SHRUBS. THESE EASEMENTS GRANT TO ALL PUBLIC AUTHORITIES THE RIGHT TO CONSTRUCT, OPERATE, MAINTAIN, INSPECT AND REPAIR SUCH IMPROVEMENT AND STRUCTURES AS IT DEEMS EXPEDIENT TO FACILITATE DRAINAGE FROM ANY SOURCE.



PREPARED BY:  
**ARLETH &  
ASSOCIATES**

382 MAIN STREET  
DEADWOOD, SD 57732  
605-578-1637

JOB NO.  
03-0024

DATE: 02/2005  
SCALE: 1"=60'  
DRAWN: RDC

APPROVED: JMA

DWG:

PREPARED FOR:  
BDM DESIGN INTERNATIONAL, INC  
388 KANSAS CITY STREET, SUITE 4  
RAPID CITY, SOUTH DAKOTA 57101  
(605) 348-0538