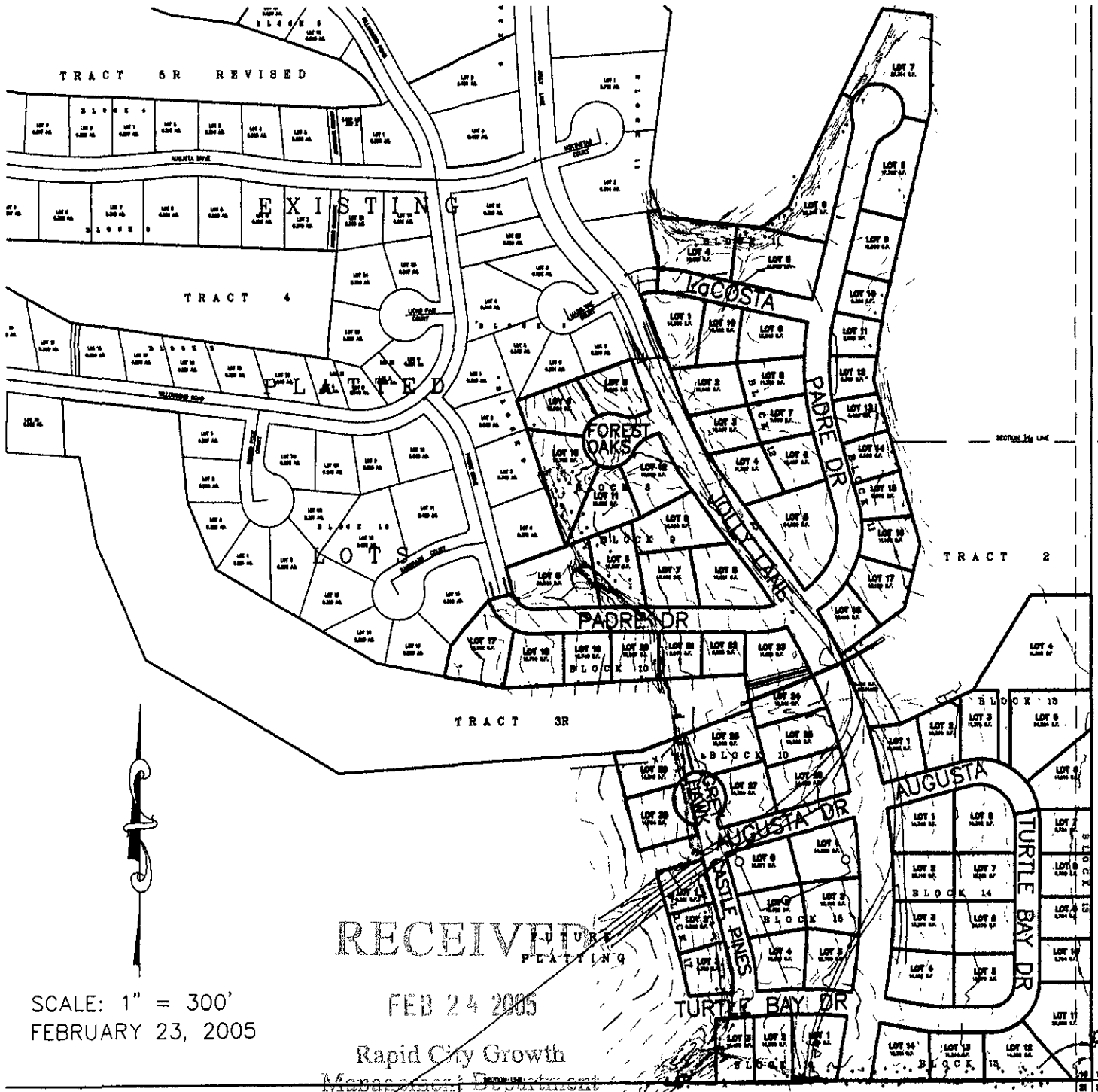


SITE PLAN

LOTS 8-12 BLK. 8, LOTS 5-9 BLK. 9, LOTS 17-30 BLK. 10,  
LOTS 4-18 BLK. 11, LOTS 1-10 BLK. 12, LOTS 1-14 BLK. 13,  
LOTS 1-8 BLK. 14, LOTS 1-6 BLK. 15, LOTS 1-3 BLK. 16,  
AND LOTS 1-3 BLK. 17 - ELKS COUNTRY ESTATES

LOCATED IN THE SE<sup>1</sup>/<sub>4</sub>  
SECTION 16, T1N, R8E, BHM,  
RAPID CITY, PENNINGTON COUNTY, SOUTH DAKOTA



SCALE: 1" = 300'  
FEBRUARY 23, 2005

RECEIVED  
PLANNING

FEB 24 2005

Rapid City Growth  
Management Department

C:\DRAWING\GS1126U-YR2004P-LAN-05.dwg, 8x11, 2/24/2005 9:53:25 AM