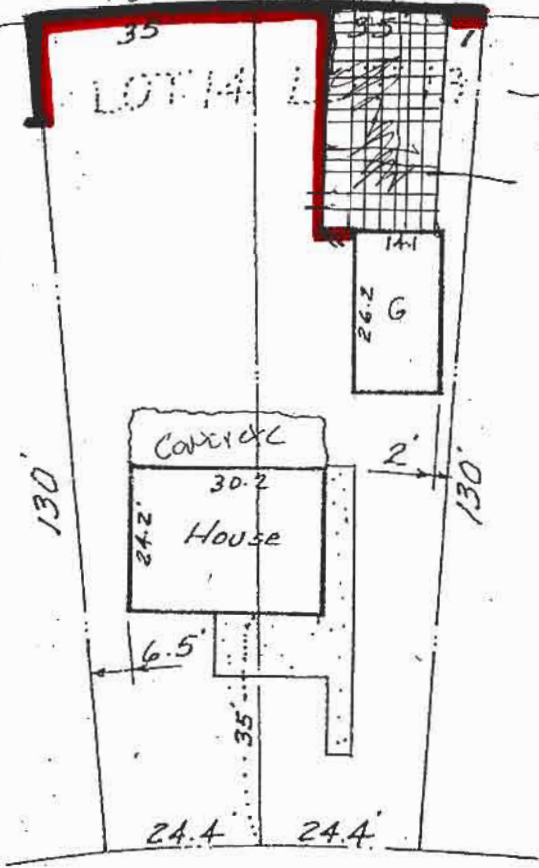


NORTH

4-13-05

Alley 43 Feet OPEN TO ALLEY 20 Feet

1"=30'



(Asphalt)
E. MEADE ST.

RECEIVED

APR 13 2005

Rapid City Growth
Management Department

~~RECEIVED~~

~~MAR 11 2005~~

~~Rapid City Growth
Management Department~~