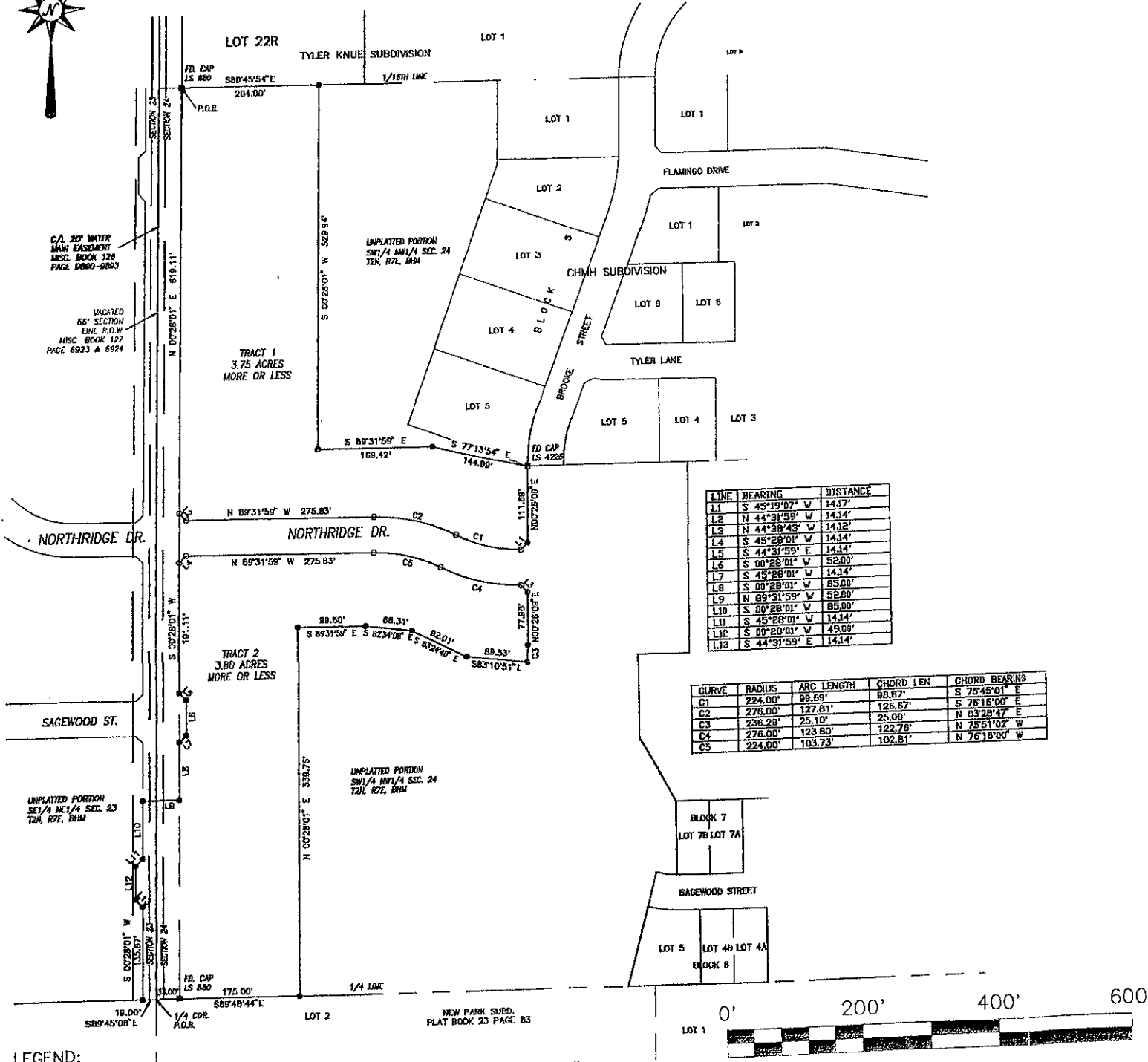


RECORD OF SURVEY

TRACT 1 AND TRACT 2 LOCATED IN THE SW1/4NW1/4 OF SECTION 24,  
T.2N., R.7E., B.H.M., RAPID CITY, PENNINGTON COUNTY, SOUTH DAKOTA

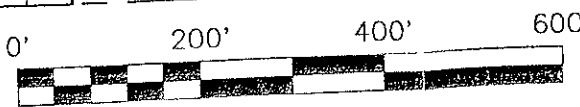


LINE	BEARING	DISTANCE
L1	S 45°19'07" W	14.47'
L2	N 44°31'59" W	14.44'
L3	N 44°38'43" W	14.32'
L4	S 45°28'01" E	14.44'
L5	S 44°31'59" E	52.00'
L6	S 00°28'01" W	14.14'
L7	S 45°28'01" W	85.00'
L8	S 00°28'01" W	14.14'
L9	N 89°31'59" W	52.00'
L10	S 00°28'01" W	85.00'
L11	S 45°28'01" W	14.14'
L12	S 00°28'01" W	49.00'
L13	S 44°31'59" E	14.14'

CURVE	RADIUS	ARC LENGTH	CHORD LEN	CHORD BEARING
C1	224.00'	99.69'	98.67'	S 76°45'01" E
C2	276.00'	127.81'	126.67'	S 76°16'00" E
C3	236.29'	25.10'	25.08'	N 03°28'47" E
C4	276.00'	123.80'	122.78'	N 75°11'02" W
C5	224.00'	103.73'	102.61'	N 76°18'00" W

LEGEND:

- Denotes set 5/8" rebar with survey cap marked "ARLETH 3977".
- Denotes previous set 5/8" rebar with survey cap marked "ARLETH 3977".
- Denotes Found Survey Monument w/cap as noted.



SCALE: 1" = 200' FEB. 24, 2005