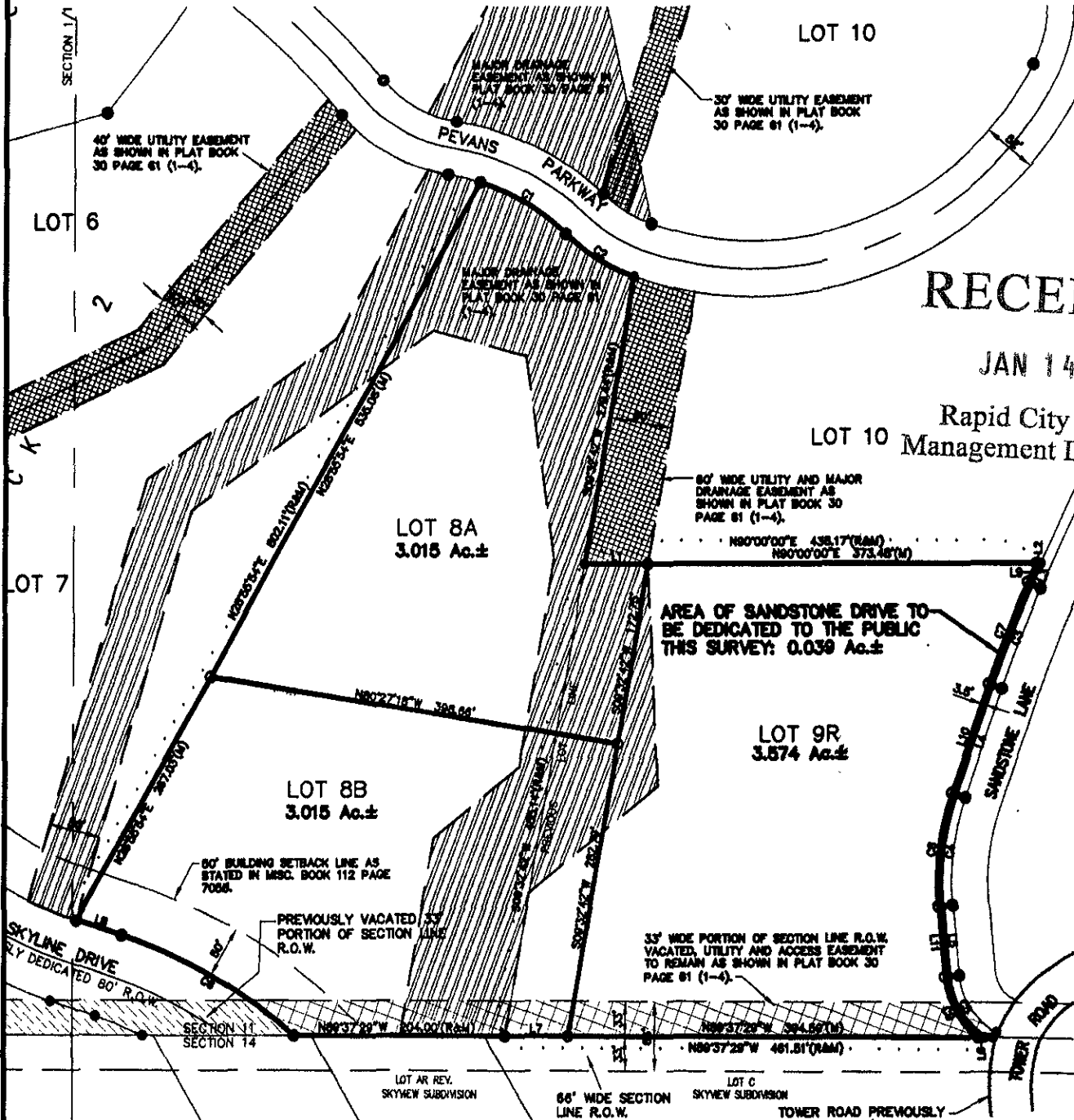


PLAT OF
**LOTS 8A, 8B, AND 9R OF BLOCK 2,
 SKYLINE PINES SUBDIVISION,
 AND A PORTION OF THE DEDICATED RIGHT-OF-WAY OF SANDSTONE LANE,**
 (formerly all of Lots 8 and 9 of Block 2, Skyline Pines Subdivision)
 LOCATED IN THE SE 1/4 OF THE SW 1/4,
 SECTION 11, T1N, R7E, B.H.M.,
 RAPID CITY, PENNINGTON COUNTY, SOUTH DAKOTA



RECEIVED

JAN 14 2005

Rapid City Growth
Management Department

ACCEPTANCE OF THIS PLAT HEREBY VACATES THAT PORTION OF THE "UTILITY AND MINOR" DRAINAGE EASEMENTS: 8' ON THE INTERIOR SIDES OF ALL LOT LINES" ALONG THE LINES MARKED "PREVIOUS LOT LINE" AS SHOWN HEREON. SAID RECORD EASEMENT IS SHOWN IN PLAT BOOK 30 PAGE 61 (1-4).

ACCESS RESTRICTION ALONG SKYLINE DRIVE RIGHT-OF-WAY PREVIOUSLY VACATED IN MISC. BOOK 112 PAGE 7061.

JANUARY 13, 2005
 N.T.S.