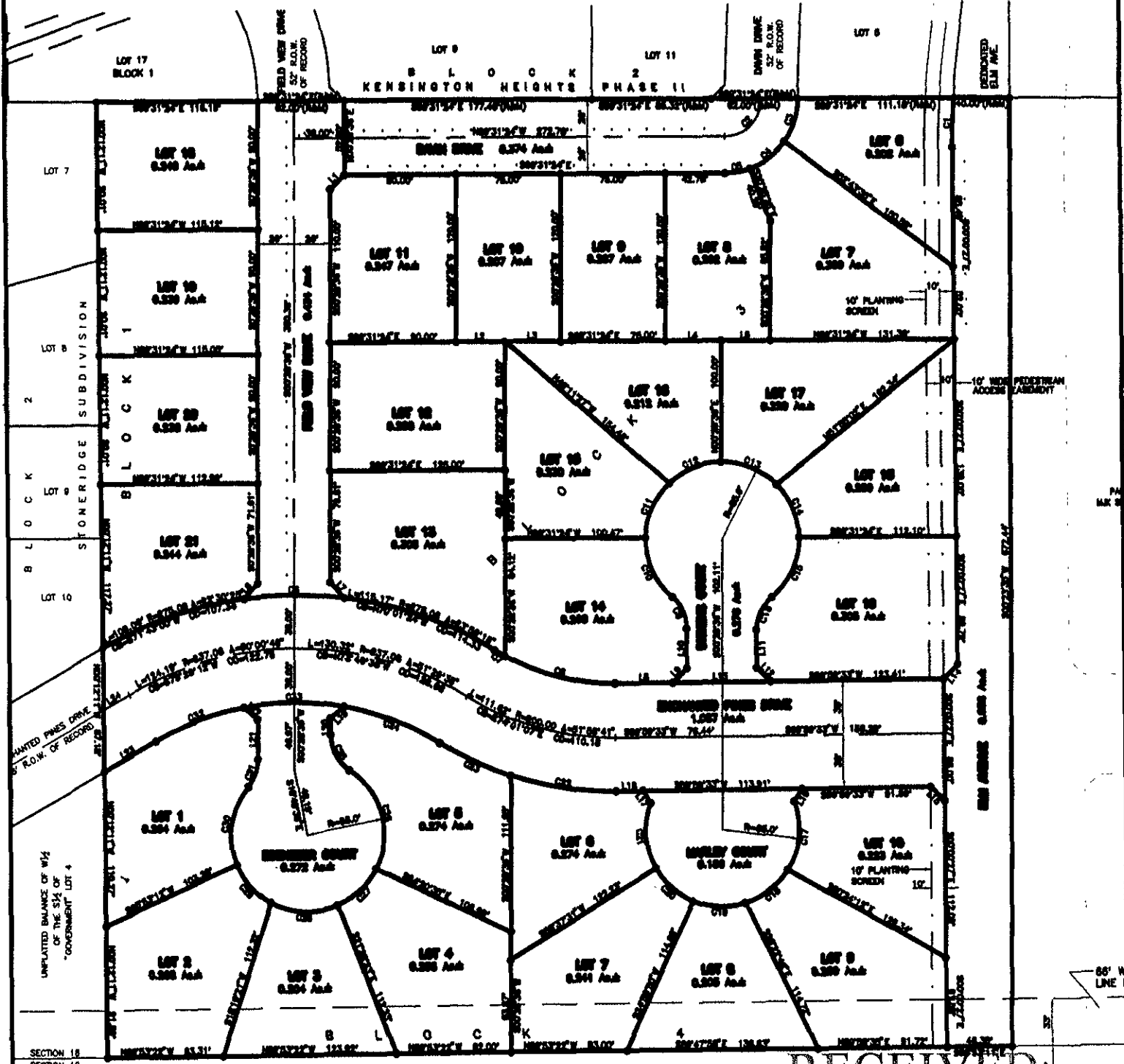


LAYOUT PLAT LOTS 18 THROUGH 21 OF BLOCK 1, LOTS 6 THROUGH 19 OF BLOCK 3, AND LOTS 1 THROUGH 10 OF BLOCK 4, KENSINGTON HEIGHTS SUBDIVISION

(formerly the E 1/2 of the S 1/2 of "Government" Lot 4)

LOCATED IN "GOVERNMENT" LOT 4,
SECTION 18, T1N, R8E, BHM,
RAPID CITY, PENNINGTON COUNTY, SOUTH DAKOTA

FEBRUARY 11, 2005
N.T.S.



RECEIVED

FEB 11 2005

Rapid City Growth