

LAYOUT PLAT

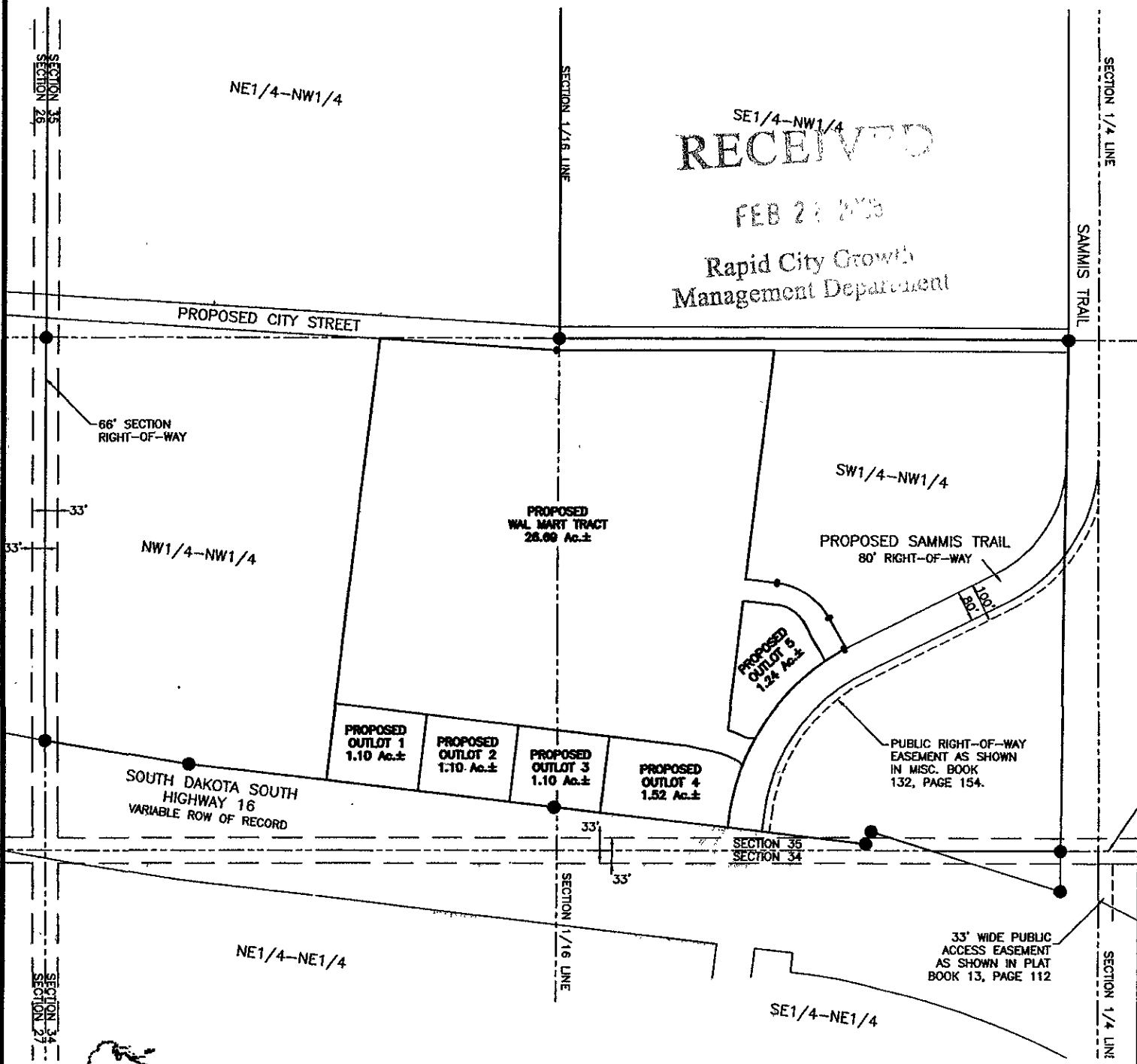
# WAL-MART TRACT AND OUTLOTS 1-5

LOCATED IN W1/2 OF NW1/4  
SECTION 35, T1N, R7E, BHM,  
RAPID CITY, PENNINGTON COUNTY, SOUTH DAKOTA

RECEIVED

FEB 28 2005

Rapid City Growth  
Management Department



## Renner Associates, LLC.

616 Sixth St. \* Rapid City, SD 57701 \* 605/721-7310  
FAX: 605/721-7313 \* E-MAIL: Gary@RennerAssoc.com  
\* Spearfish 605/717-0016 \*

FEBRUARY 28, 2005  
N.T.S.



CITY HALL 1903