

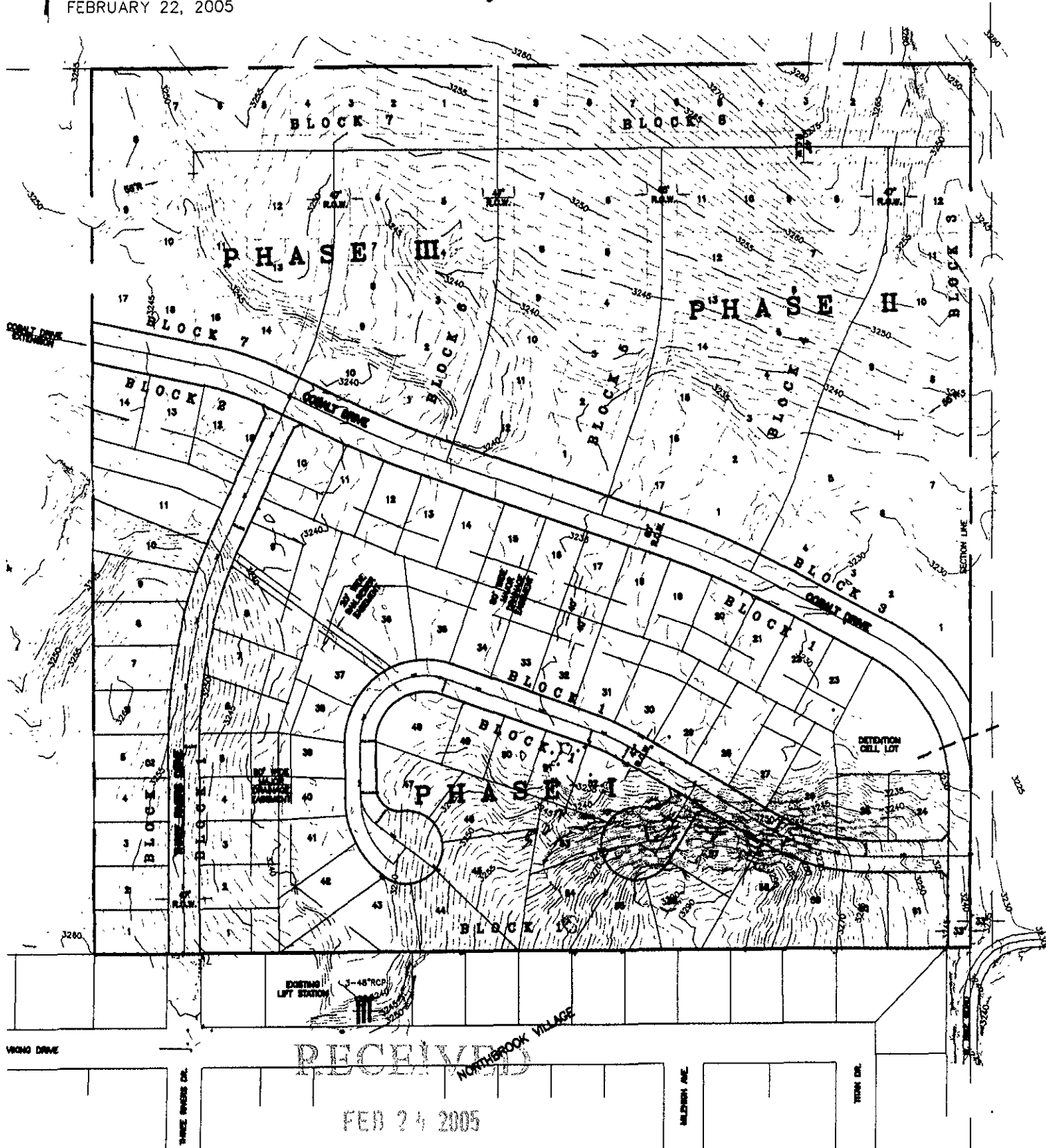
BROOKFIELD SUBDIVISION

LOCATED IN THE NE¹/₄ OF THE SE¹/₄,
SECTION 13, T2N, R7E, BHM,
PENNINGTON COUNTY, SOUTH DAKOTA



SCALE: 1" = 200'
FEBRUARY 22, 2005

SW¹/₄ NE¹/₄



C:\DRAWINGS\3003\PLAN.dwg, 8x11, 2/22/2005 1:28:28 PM

RECEIVED
FEB 24 2005