

PLAT OF LOTS 8, 9, AND 10 OF BLOCK 22, TRAILWOOD VILLAGE

(formerly a portion of Tract T of Trailwood Village)
LOCATED IN THE SE $\frac{1}{4}$ OF THE SE $\frac{1}{4}$,
SECTION 10, T1N, R8E, BHM,
PENNINGTON COUNTY, SOUTH DAKOTA

RECEIVED

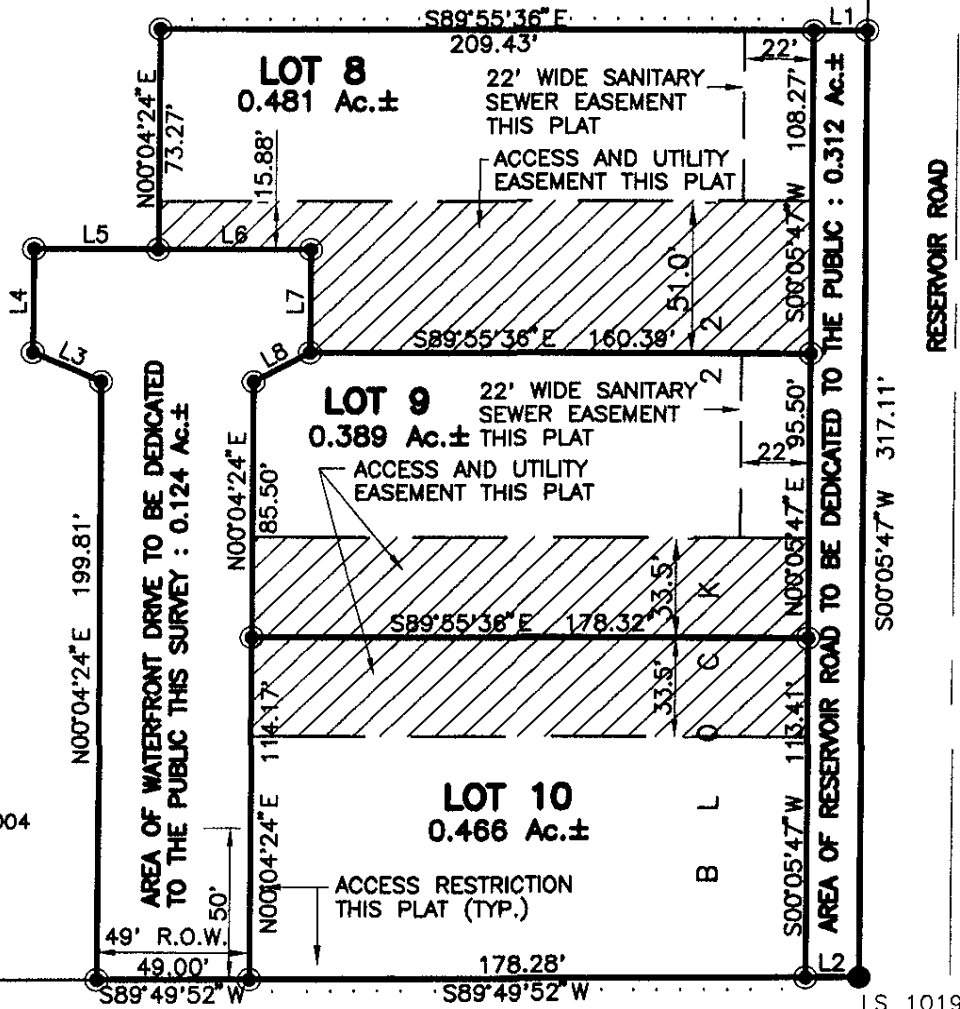
"Access Restrictions" shown hereon define locations where no approaches or access is allowed onto adjacent right-of-way.

DEC 30 2004

Rapid City Growth
Management Department

LINE	LENGTH	BEARING
L1	17.00	S89°55'36" E
L2	17.00	S89°49'52" W
L3	24.18	N65°25'59" W
L4	35.04	N00°04'24" E
L5	40.00	S89°55'36" E
L6	49.03	S89°55'36" E
L7	35.00	S00°04'24" W
L8	20.57	S60°59'04" W

PORTION OF TRACT T



DECEMBER 28, 2004
N.T.S.

LONG VIEW ROAD
66' WIDE R.O.W.

SECTION 10 SECTION 11
SECTION 15 SECTION 14