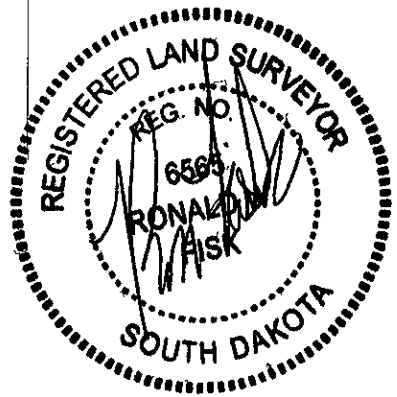
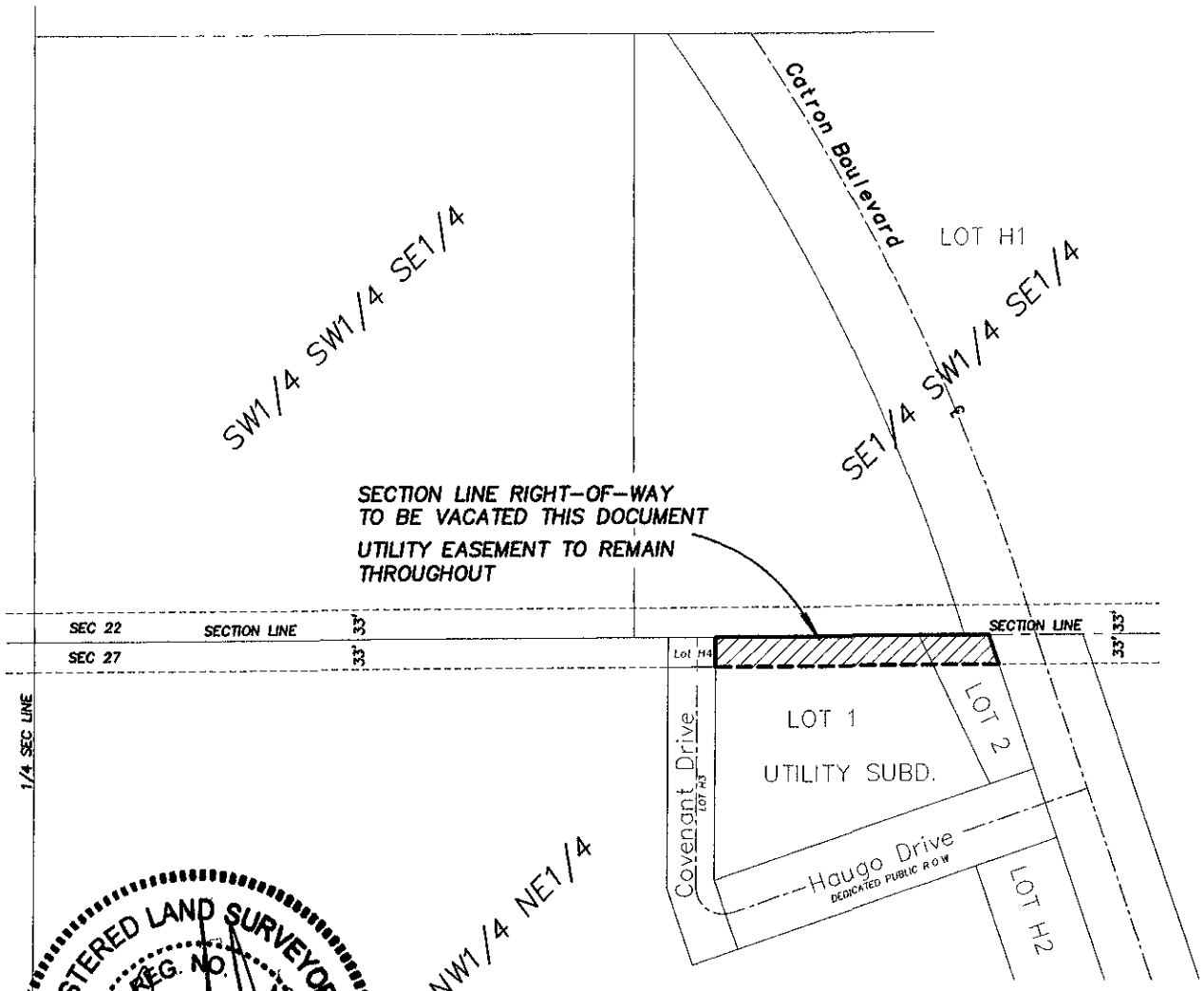
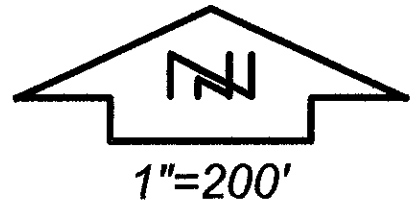


# EXHIBIT A

VACATION OF SECTION LINE RIGHT-OF-WAY  
LOCATED IN LOT 1 AND LOT 2 OF UTILITY SUBDIVISION  
IN THE NE1/4 OF SECTION 27, T1N, R7E, B.H.M.,  
RAPID CITY, PENNINGTON COUNTY, SOUTH DAKOTA



## RECEIVED

JAN 28 2005

Rapid City Growth  
Management Department