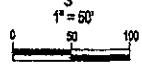


RECEIVED

DEC 10 2004

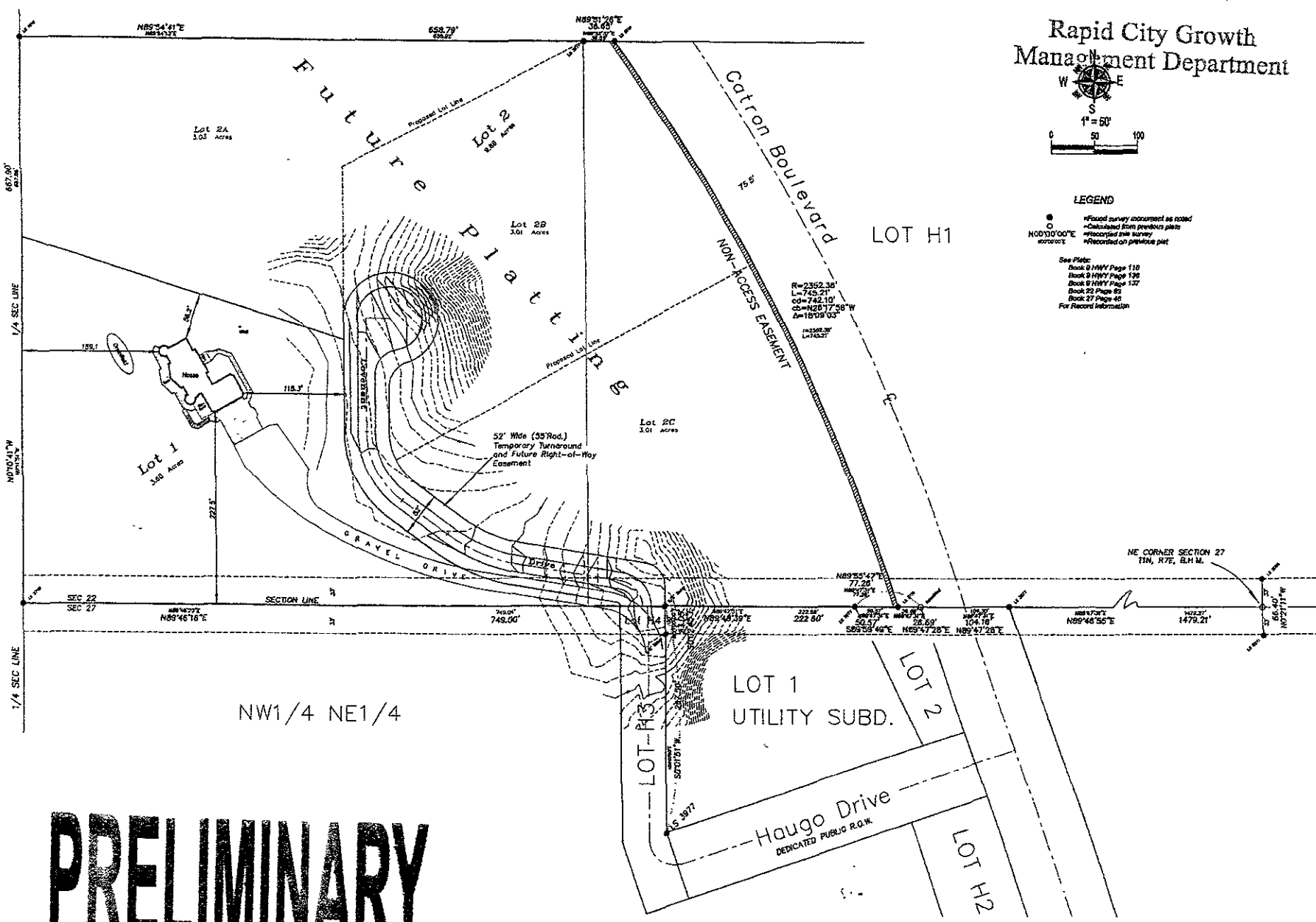
Rapid City Growth Management Department



LEGEND

- Fixed survey monument as noted
- Calculated from previous plat
- Recorded this survey
- Recorded on previous plat

See Plat:
 Book 8 HWY Page 110
 Book 8 HWY Page 130
 Book 8 HWY Page 137
 Book 22 Page 88
 Book 27 Page 45
 For Record Information



Boundary Survey and Development Layout
 SW1/4 SW1/4 SE1/4 and
 SE1/4 SW1/4 SE1/4 less Lot H1
 Section 22, T1N, R7E, B.H.M.,
 Rapid City, Pennington County, South Dakota

1022 Main Street
 P.O. Box 8154
 Rapid City, South Dakota
 57709
 (605) 345-1556
 (800) 341-1112 (toll free)

Fisk Land Surveying
 & Consulting
 Engineers, Inc.



Date: 11/18/04
 Surveyed by: ML/R
 Drawn by: BL/RWF
 Checked by: JF/WF
 Revisions: 11/18/04

Project No. 04-11-02

PRELIMINARY