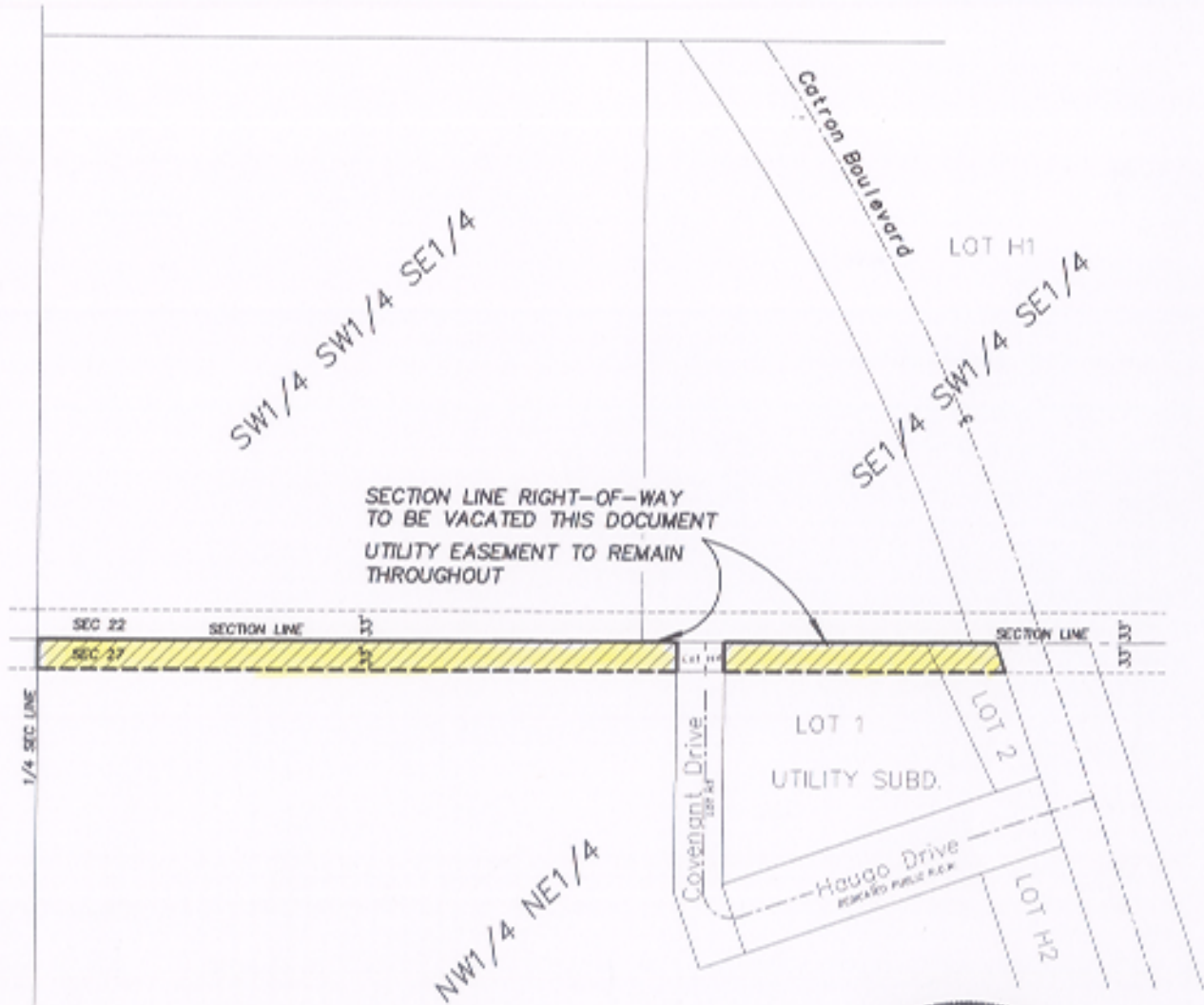


EXHIBIT A

VACATION OF SECTION LINE RIGHT-OF-WAY
LOCATED IN LOT 1 AND LOT 2 OF UTILITY SUBDIVISION
AND THE NW1/4 NE1/4 LESS LOT H4 OF SECTION 27, T1N, R7E, B.H.M.,
RAPID CITY, PENNINGTON COUNTY, SOUTH DAKOTA



RECEIVED

DEC 10 2004

Rapid City Growth
Management Department

PREPARED BY:
FISK LAND SURVEYING & CONSULTING ENGINEERS, INC.
P.O. BOX 8154, RAPID CITY, SD 57709 (605) 348-1538 December 9, 2004

