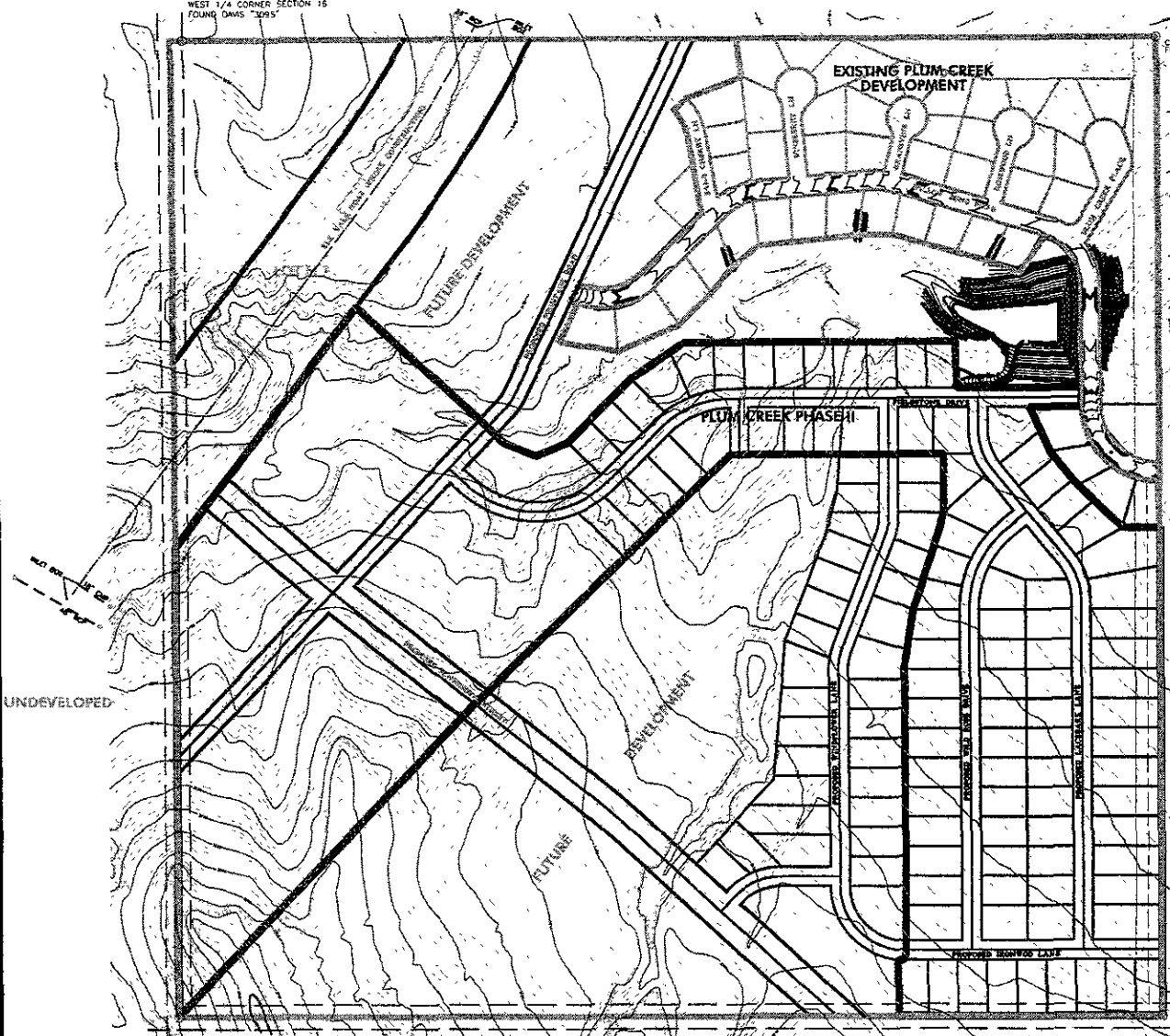


05PL020

WEST 1/4 CORNER SECTION 16  
FOUND DAVIS "1095"

SOUTH 1/4 CORNER SECTION 16  
FOUND BRASS MONUMENT



**RECEIVED**

JAN 28 2005

Rapid City Growth  
Management Department

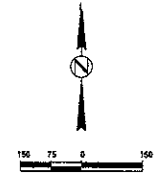
ELK COUNTRY  
ESTATES

DEVELOPER/OWNER: PLUM CREEK DEVELOPMENT L.L.C.  
2655 VALLEY DRIVE  
RAPID CITY SOUTH DAKOTA

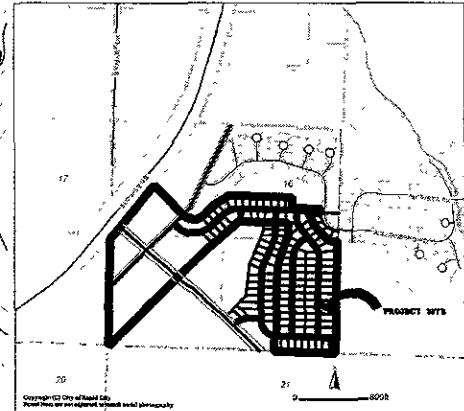


PLUM CREEK PHASE II  
SW 1/4 SECTION 16, T1 N, R 8E,  
B.H.M. PENNINGTON COUNTY,  
RAPID CITY, SD

|             |              |
|-------------|--------------|
| DATE        | AS NOTED     |
| DESIGNED BY | DRAWN BY JRM |
| CHECKED BY  | DATE         |
| DATE        | DATE         |
| DATE        | DATE         |
| DATE        | DATE         |
| DATE        | DATE         |



VICINITY MAP



LAYOUT PLAT