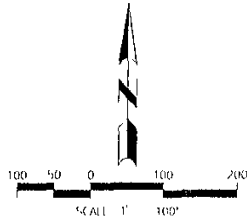
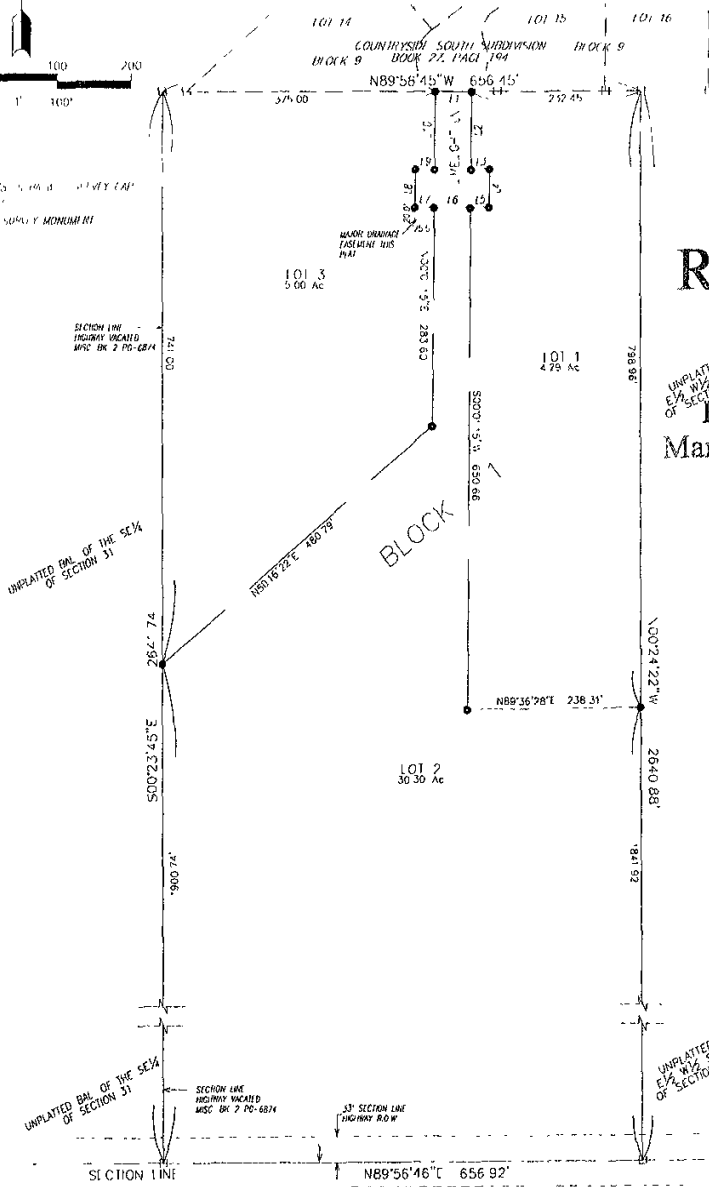


10151 S BLOCK 1
 LOCATED IN THE W 1/2 W 1/2 S 1/4 OF SECTION 52
 11N, R21E, B11E.M.
 PENNINGTON COUNTY, SOUTH DAKOTA



11 G.M.D.
 • DENOTE 1/4\"/>



RECEIVED

DEC 30 2004

UNPLATTED E/A W 1/2 S 1/4 OF SECTION 52
 Rapid City Growth Management Department

UNPLATTED BAL. OF THE SE 1/4 OF SECTION 51

UNPLATTED BAL. OF THE SE 1/4 OF SECTION 51

UNPLATTED E/A W 1/2 S 1/4 OF SECTION 52

LINE TABLE

NUMBER	DIRECTION	DISTANCE
11	S 89°58'45\"/>	
12	S 00°01'15\"/>	
13	N 89°56'45\"/>	
14	S 00°01'15\"/>	
15	S 89°56'45\"/>	
16	N 89°58'45\"/>	
17	S 89°58'45\"/>	
18	N 00°01'15\"/>	
19	N 89°58'45\"/>	
110	N 00°01'15\"/>	

NOTES

- MINOR DRAINAGE AND UTILITY EASEMENT SHALL HEREBY ESTABLISHED 8' WIDE ON THE INTERIOR SIDE OF ALL LOT LINES AND RIGHT OF WAY, (EXCEPT WHERE MAJOR DRAINAGE EASEMENTS ARE LOCATED)
- TOTAL PLATTED AREA 39.83 ACRES, LOTS 39.59 ACRES, UNPLATTED PUBLIC RIGHT-OF-WAY 0.24 ACRES
- ANY MAJOR DRAINAGE EASEMENT SHOWN HEREON SHALL BE KEPT FREE OF ALL OBSTRUCTIONS INCLUDING BUT NOT LIMITED TO BUILDINGS, WALLS, FENCES, HEDGES, TREES, AND SHRUBS. THESE EASEMENTS GRANT TO ALL PUBLIC AUTHORITIES THE RIGHT TO CONSTRUCT, OPERATE, MAINTAIN, INSPECT AND REPAIR SUCH IMPROVEMENTS AND STRUCTURES AS IT DEEMS EXPEDIENT TO FACILITATE DRAINAGE FROM ANY SOURCE
- NON ACCESS EASEMENTS ARE HEREBY ESTABLISHED ALONG THE INTERIOR LINE OF CORNER LOTS OR AS INDICATED HEREON