

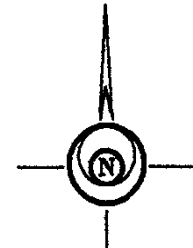
SURVEY PLAT OF:  
MURPHY RANCH ESTATES SUBDIVISION  
INCLUDING:

- LOTS 10 THRU 13 OF BLOCK 3,
- LOTS 9 THRU 15 OF BLOCK 4,
- LOTS 2 THRU 7 OF BLOCK 5,
- LOT 1 BLOCK 8,
- LOT 2 BLOCK 10,
- LOTS 2 THRU 5 OF BLOCK 11,

FORMERLY: A PORTION OF TRACT F OF THE NW1/4  
OF SECTION 14, T1N, R8E, BHM.

ALL LOCATED IN: NE 1/4 NW1/4 AND NW1/4 NW1/4  
OF SECTION 14, T1N, R8E, BHM  
PENNINGTON COUNTY, SOUTH DAKOTA

NOTICE OF HEARING  
MAY BE SENT TO:  
DAVIS ENGINEERING, INC.  
1080 KINGS ROAD  
RAPID CITY, SD 57702



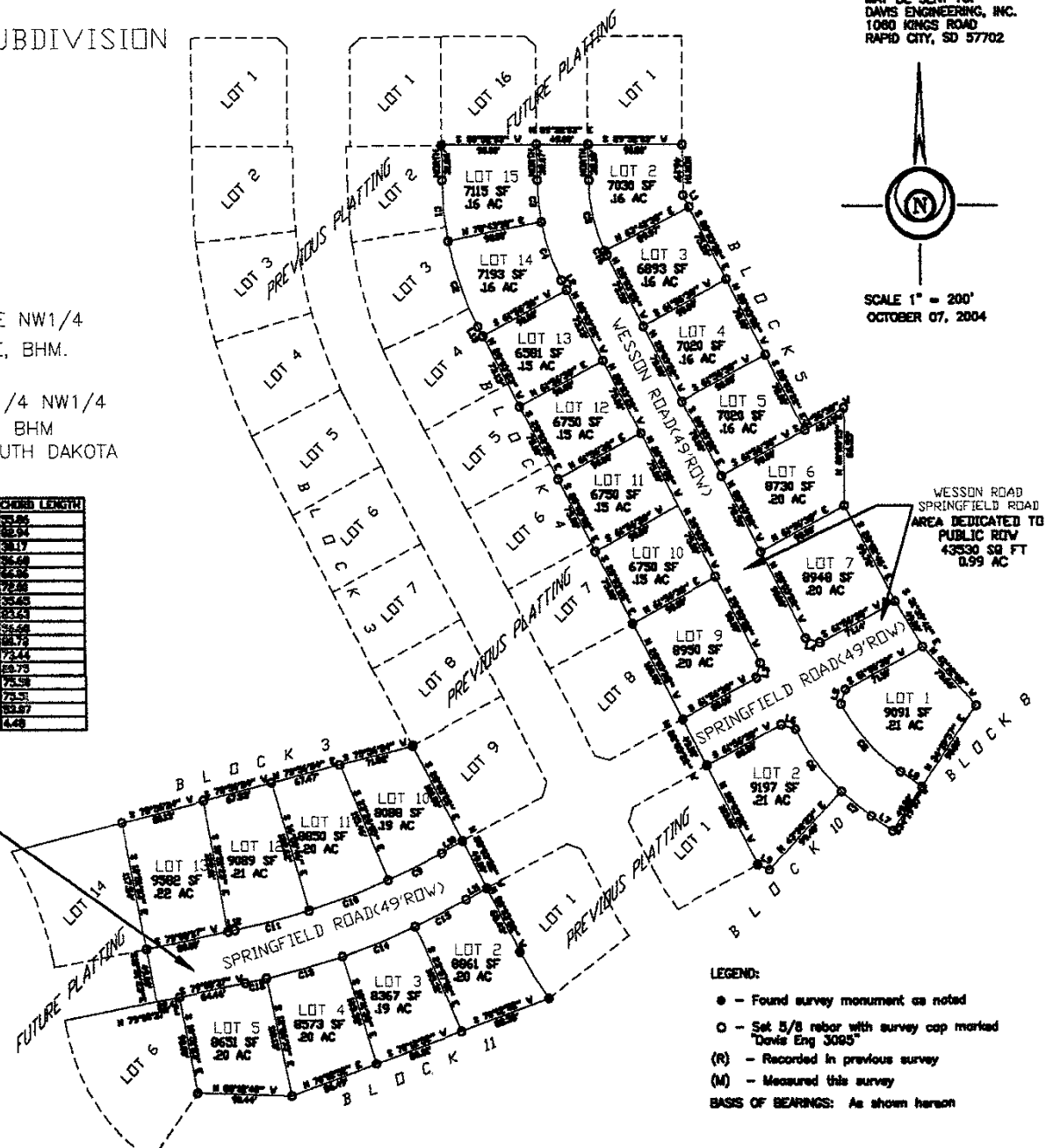
SCALE 1" = 200'  
OCTOBER 07, 2004

NUMBER	BEARING	ANGLE	COORDS	DIRECTION	YACRES	BARRELS	ARC LENGTH	CHORD LENGTH
C1	S 87°43'	S	85.35	E	88.17	88.14	88.15	88.14
C2	S 87°42'	S	15.46	E	42.82	88.14	88.20	88.14
C3	S 87°42'	S	85.35	E	10.18	88.14	88.20	88.17
C4	S 87°42'	S	17.44	E	88.64	88.14	88.20	88.14
C5	S 87°42'	S	85.35	E	88.64	88.14	88.20	88.14
C6	S 87°42'	S	85.35	E	88.64	88.14	88.20	88.14
C7	S 87°42'	S	85.35	E	88.64	88.14	88.20	88.14
C8	S 87°42'	S	85.35	E	88.64	88.14	88.20	88.14
C9	S 87°42'	S	85.35	E	88.64	88.14	88.20	88.14
C10	S 87°42'	S	85.35	E	88.64	88.14	88.20	88.14
C11	S 87°42'	S	85.35	E	88.64	88.14	88.20	88.14
C12	S 87°42'	S	85.35	E	88.64	88.14	88.20	88.14
C13	S 87°42'	S	85.35	E	88.64	88.14	88.20	88.14
C14	S 87°42'	S	85.35	E	88.64	88.14	88.20	88.14
C15	S 87°42'	S	85.35	E	88.64	88.14	88.20	88.14
C16	S 87°42'	S	85.35	E	88.64	88.14	88.20	88.14

NUMBER	DIRECTION	DISTANCE
L1	N 89°52' E	12.37
L2	S 89°52' E	8.87
L3	S 89°52' E	14.34
L4	S 77°52' E	14.34
L5	S 17°49' E	14.34
L6	S 75°52' E	14.34
L7	S 89°52' E	8.87
L8	S 89°52' E	14.34
L9	S 69°52' E	14.34
L10	S 69°52' E	14.34
L11	N 89°52' E	12.37
L12	N 89°52' E	8.87
L13	S 89°52' E	14.34

SPRINGFIELD ROAD  
AREA DEDICATED TO  
PUBLIC ROW  
16051 SQ FT  
0.37 AC

WESSON ROAD  
SPRINGFIELD ROAD  
AREA DEDICATED TO  
PUBLIC ROW  
43530 SQ FT  
0.99 AC



LEGEND:  
● - Found survey monument as noted  
○ - Set 5/8 rebar with survey cap marked "Davis Eng 3005"  
(R) - Recorded in previous survey  
(M) - Measured this survey  
BASIS OF BEARINGS: As shown hereon