

RECEIVED

PLAT OF

05PL006

JAN 12 2005

LOTS 1 THROUGH 5 PARK MEADOWS

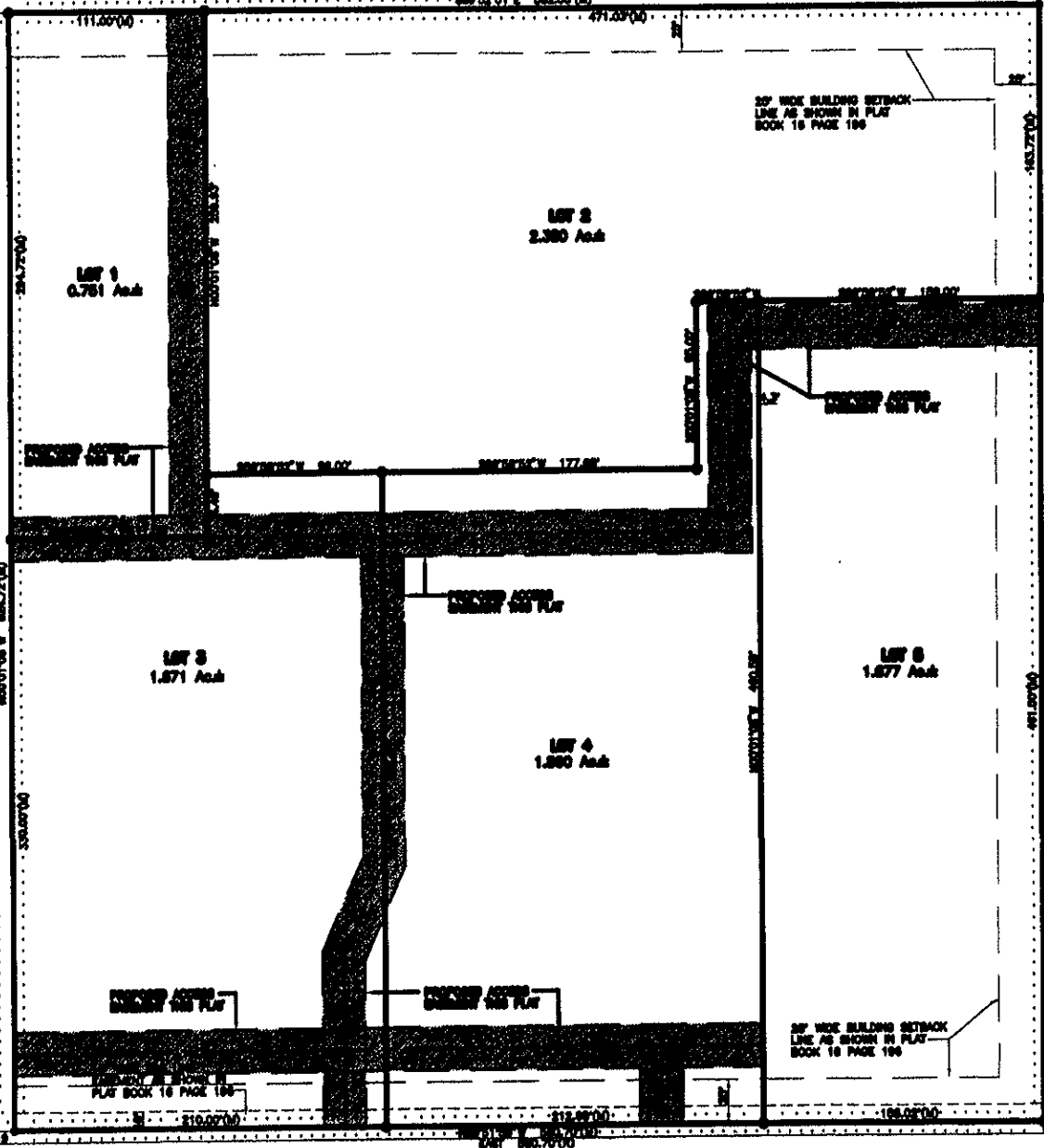
Rapid City Growth
Management Department

(formerly Lot B of Lot 3 of Tract D)

LOCATED IN THE SW¹/₄ OF THE SW¹/₄
SECTION 5, T1N, R8E, BHM
RAPID CITY, PENNINGTON COUNTY, SOUTH DAKOTA

EAST ST. CHARLES STREET
80' R.O.W. OF RECORD

LOT A OF LOT 3 OF TRACT D



EAST ST. PATRICK STREET
80' R.O.W. OF RECORD

JANUARY 5, 2005

PREPARED BY: SPERLICH CONSULTING, INC. * 821 1/2 COLUMBUS STREET RAPID CITY SD 57701 * (605) 721-4040