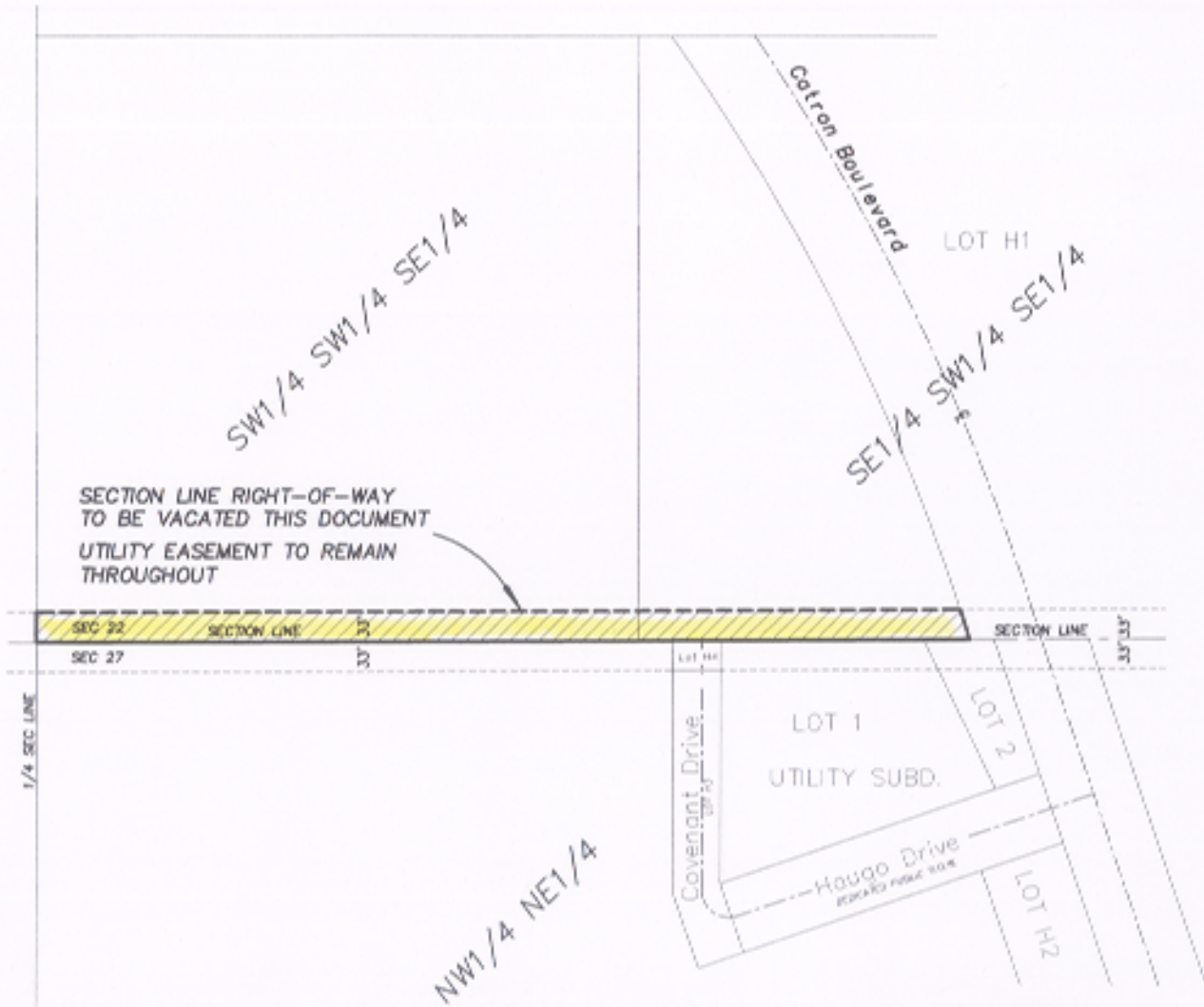


# EXHIBIT A

VACATION OF SECTION LINE RIGHT-OF-WAY  
LOCATED IN THE SW1/4 SW1/4 SE1/4 AND SE1/4 SW1/4 SE1/4 LESS LOT H1  
SECTION 22, T1N, R7E, B.H.M.,  
RAPID CITY, PENNINGTON COUNTY, SOUTH DAKOTA



SECTION LINE RIGHT-OF-WAY  
TO BE VACATED THIS DOCUMENT  
UTILITY EASEMENT TO REMAIN  
THROUGHOUT

## RECEIVED

DEC 10 2004

Rapid City Growth  
Management Department



PREPARED BY:  
FISK LAND SURVEYING & CONSULTING ENGINEERS, INC.  
P.O. BOX 8154, RAPID CITY, SD 57709 (605) 348-1538 December 9, 2004