

PLAT OF
**LOTS 8, 9, AND 10 OF BLOCK 22,
 TRAILWOOD VILLAGE**

(formerly a portion of Tract T of Trailwood Village)
 LOCATED IN THE SE¹/₄ OF THE SE¹/₄,
 SECTION 10, T1N, R8E, BHM,
 PENNINGTON COUNTY, SOUTH DAKOTA

RECEIVED

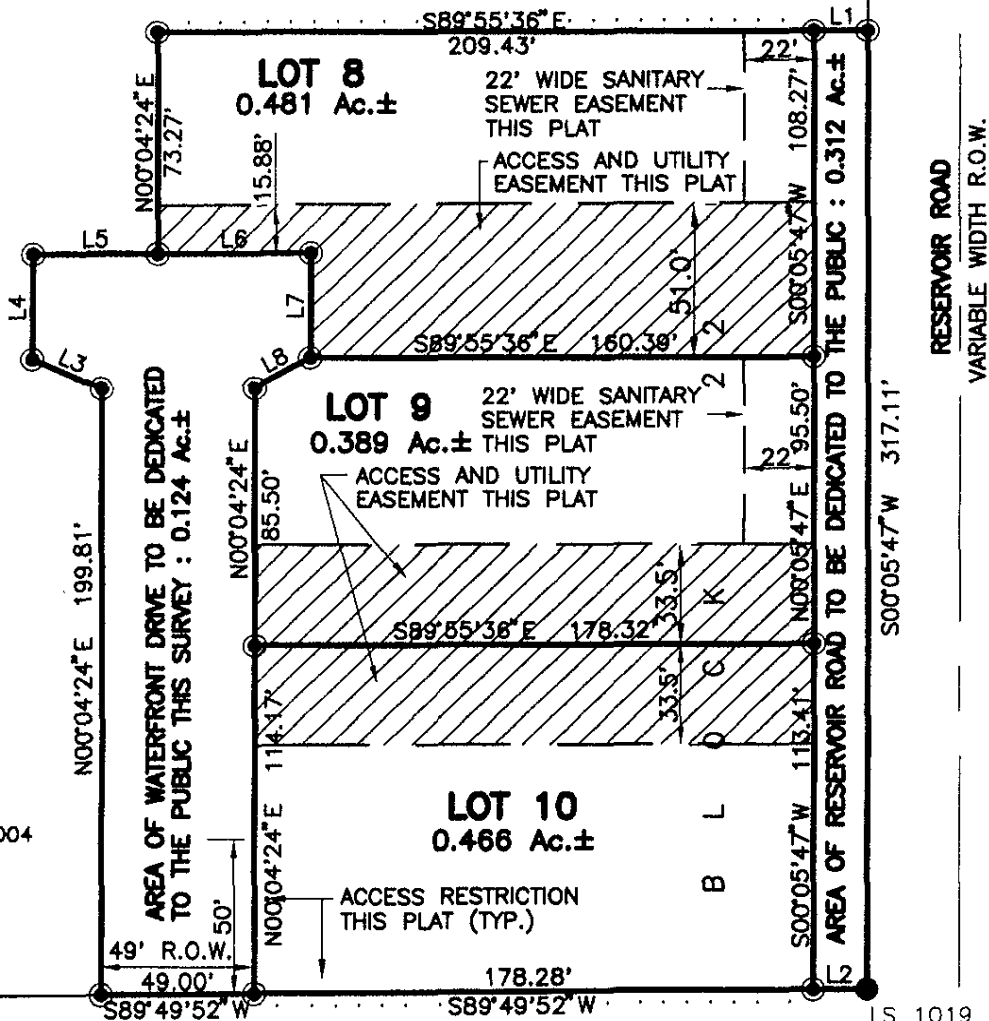
DEC 30 2004

Rapid City Growth
 Management Department

"Access Restrictions" shown hereon define
 locations where no approaches or access is
 allowed onto adjacent right-of-way.

LINE	LENGTH	BEARING
L1	17.00	S89°55'36"E
L2	17.00	S89°49'52"W
L3	24.18	N65°25'59"W
L4	35.04	N00°04'24"E
L5	40.00	S89°55'36"E
L6	49.03	S89°55'36"E
L7	35.00	S00°04'24"W
L8	20.57	S60°59'04"W

PORTION OF TRACT T



LOT A

SECTION 10 SECTION 11
 SECTION 15 SECTION 14