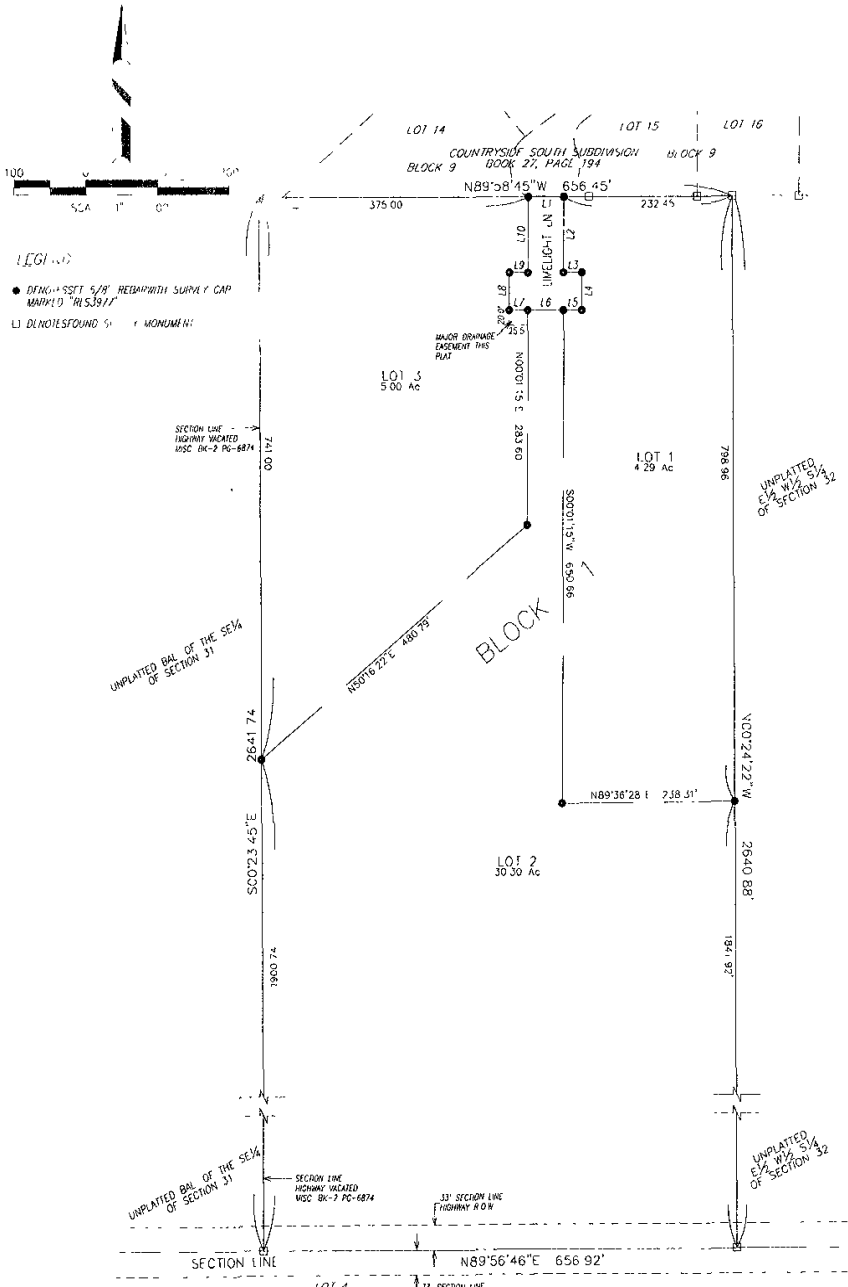


BULLHORN SUBDIVISION

LOTS 1-3 BLOCK 1
LOCATED IN THE W 1/2 W 1/2 S 1/4 OF SECTION 32
T 1 N, R 7 E, B 1 H M,
PENNINGTON COUNTY, SOUTH DAKOTA



RECEIVED
 DEC 30 2004
 Rapid City Growth
 Management Department

LINE TABLE

NUMBER	DIRECTION	DISTANCE
L1	S 89°58'45" E	49.00'
L2	S 00°01'15" W	100.00'
L3	N 89°58'45" W	25.50'
L4	S 00°01'15" W	50.00'
L5	S 89°58'45" E	25.50'
L6	N 89°58'45" W	49.00'
L7	S 89°58'45" E	25.50'
L8	N 00°01'15" E	50.00'
L9	N 89°58'45" W	25.50'
L10	N 00°01'15" E	100.00'

- NOTES**
- MINOR DRAINAGE AND UTILITY EASEMENTS ARE HEREBY ESTABLISHED 8' WIDE ON THE INTERIOR SIDE OF ALL LOT LINES AND RIGHT-OF-WAY (EXCEPT WHERE MAJOR DRAINAGE EASEMENTS ARE LOCATED)
 - TOTAL PLATTED AREA 39.83 ACRES, LOTS 39.59 ACRES, DEDICATED PUBLIC RIGHT-OF-WAY 0.24 ACRES
 - ANY MAJOR DRAINAGE EASEMENT SHOWN HEREON SHALL BE KEPT FREE OF ALL OBSTRUCTIONS INCLUDING BUT NOT LIMITED TO BUILDINGS, WALLS, FENCES, HEDGES, TREES, AND SHRUBS THESE EASEMENTS GRANT TO ALL PUBLIC AUTHORITIES THE RIGHT TO CONSTRUCT, OPERATE, MAINTAIN, INSPECT AND REPAIR SUCH IMPROVEMENTS AND STRUCTURES AS IT DEEMS EXPEDIENT TO FACILITATE DRAINAGE FROM ANY SOURCE
 - NON-ACCESS EASEMENTS ARE HEREBY ESTABLISHED ALONG THE FIRST FIFTY FEET OF CORNER LOTS OR AS INDICATED HEREON



PREPARED BY
**ARLETH &
 ASSOCIATES**

382 MAIN STREET
 DEADWOOD, SD 57732
 605-578-1637

JOB NO
 03-0018

DATE
 SCALE 1" = 100'
 DRAWN

APPROVED JMA
 DWG 03-0018PLAT.DWG

PREPARED FOR
 DUNAW RESUBDIVISIONAL INC
 528 KANSAS CITY STREET SUITE 4
 SPOFFORD, SOUTH DAKOTA 57701
 (605) 248-3558