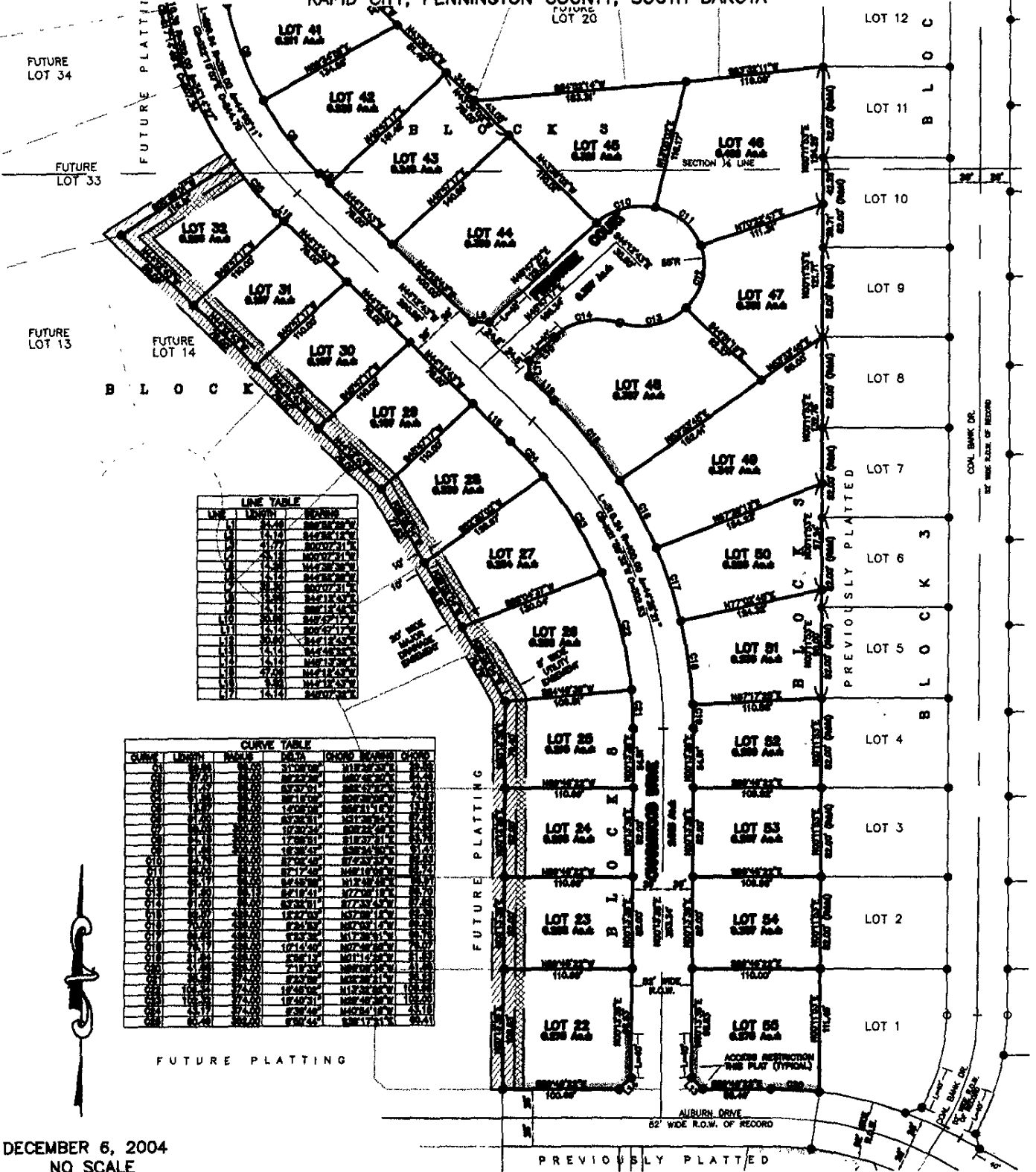


# PLAT OF LOTS 27-55 BLOCK 3, LOTS 6-11 BLOCK 4, LOTS 22-32 BLOCK 8, AUBURN HILLS SUBDIVISION

(FORMERLY A PORTION OF THE NW<sup>1</sup>/<sub>4</sub> OF THE SW<sup>1</sup>/<sub>4</sub>, AND A PORTION OF THE SW<sup>1</sup>/<sub>4</sub> OF THE NW<sup>1</sup>/<sub>4</sub>)  
LOCATED IN THE NW<sup>1</sup>/<sub>4</sub> OF THE SW<sup>1</sup>/<sub>4</sub>, AND IN THE SW<sup>1</sup>/<sub>4</sub> OF THE NW<sup>1</sup>/<sub>4</sub>,  
SECTION 13, T2N, R7E, BHM,  
RAPID CITY, PENNINGTON COUNTY, SOUTH DAKOTA



**LINE TABLE**

LINE	LENGTH	BEARING
1	14.14	N 45° 00' 00" E
2	14.14	N 45° 00' 00" E
3	14.14	N 45° 00' 00" E
4	14.14	N 45° 00' 00" E
5	14.14	N 45° 00' 00" E
6	14.14	N 45° 00' 00" E
7	14.14	N 45° 00' 00" E
8	14.14	N 45° 00' 00" E
9	14.14	N 45° 00' 00" E
10	14.14	N 45° 00' 00" E
11	14.14	N 45° 00' 00" E
12	14.14	N 45° 00' 00" E
13	14.14	N 45° 00' 00" E
14	14.14	N 45° 00' 00" E
15	14.14	N 45° 00' 00" E
16	14.14	N 45° 00' 00" E
17	14.14	N 45° 00' 00" E
18	14.14	N 45° 00' 00" E
19	14.14	N 45° 00' 00" E
20	14.14	N 45° 00' 00" E
21	14.14	N 45° 00' 00" E
22	14.14	N 45° 00' 00" E
23	14.14	N 45° 00' 00" E
24	14.14	N 45° 00' 00" E
25	14.14	N 45° 00' 00" E
26	14.14	N 45° 00' 00" E
27	14.14	N 45° 00' 00" E
28	14.14	N 45° 00' 00" E
29	14.14	N 45° 00' 00" E
30	14.14	N 45° 00' 00" E
31	14.14	N 45° 00' 00" E
32	14.14	N 45° 00' 00" E
33	14.14	N 45° 00' 00" E
34	14.14	N 45° 00' 00" E
35	14.14	N 45° 00' 00" E
36	14.14	N 45° 00' 00" E
37	14.14	N 45° 00' 00" E
38	14.14	N 45° 00' 00" E
39	14.14	N 45° 00' 00" E
40	14.14	N 45° 00' 00" E
41	14.14	N 45° 00' 00" E
42	14.14	N 45° 00' 00" E
43	14.14	N 45° 00' 00" E
44	14.14	N 45° 00' 00" E
45	14.14	N 45° 00' 00" E
46	14.14	N 45° 00' 00" E
47	14.14	N 45° 00' 00" E
48	14.14	N 45° 00' 00" E
49	14.14	N 45° 00' 00" E
50	14.14	N 45° 00' 00" E
51	14.14	N 45° 00' 00" E
52	14.14	N 45° 00' 00" E
53	14.14	N 45° 00' 00" E
54	14.14	N 45° 00' 00" E
55	14.14	N 45° 00' 00" E
56	14.14	N 45° 00' 00" E
57	14.14	N 45° 00' 00" E
58	14.14	N 45° 00' 00" E
59	14.14	N 45° 00' 00" E
60	14.14	N 45° 00' 00" E
61	14.14	N 45° 00' 00" E
62	14.14	N 45° 00' 00" E
63	14.14	N 45° 00' 00" E
64	14.14	N 45° 00' 00" E
65	14.14	N 45° 00' 00" E
66	14.14	N 45° 00' 00" E
67	14.14	N 45° 00' 00" E
68	14.14	N 45° 00' 00" E
69	14.14	N 45° 00' 00" E
70	14.14	N 45° 00' 00" E
71	14.14	N 45° 00' 00" E
72	14.14	N 45° 00' 00" E
73	14.14	N 45° 00' 00" E
74	14.14	N 45° 00' 00" E
75	14.14	N 45° 00' 00" E
76	14.14	N 45° 00' 00" E
77	14.14	N 45° 00' 00" E
78	14.14	N 45° 00' 00" E
79	14.14	N 45° 00' 00" E
80	14.14	N 45° 00' 00" E
81	14.14	N 45° 00' 00" E
82	14.14	N 45° 00' 00" E
83	14.14	N 45° 00' 00" E
84	14.14	N 45° 00' 00" E
85	14.14	N 45° 00' 00" E
86	14.14	N 45° 00' 00" E
87	14.14	N 45° 00' 00" E
88	14.14	N 45° 00' 00" E
89	14.14	N 45° 00' 00" E
90	14.14	N 45° 00' 00" E
91	14.14	N 45° 00' 00" E
92	14.14	N 45° 00' 00" E
93	14.14	N 45° 00' 00" E
94	14.14	N 45° 00' 00" E
95	14.14	N 45° 00' 00" E
96	14.14	N 45° 00' 00" E
97	14.14	N 45° 00' 00" E
98	14.14	N 45° 00' 00" E
99	14.14	N 45° 00' 00" E
100	14.14	N 45° 00' 00" E

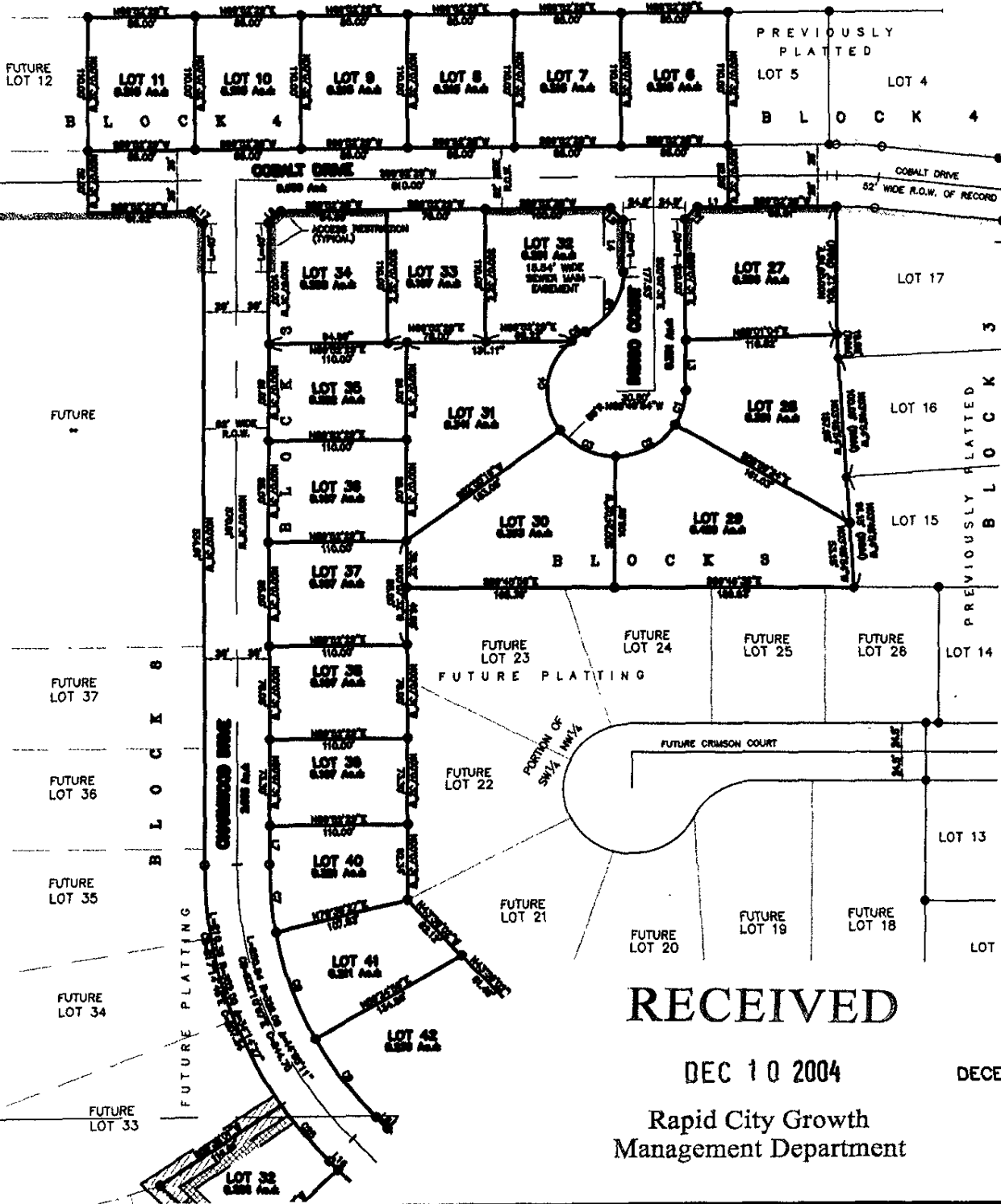
**CURVE TABLE**

CURVE	LENGTH	BEARING	CHORD	CHORD BEARING	AREA
1	14.14	N 45° 00' 00" E	14.14	N 45° 00' 00" E	14.14
2	14.14	N 45° 00' 00" E	14.14	N 45° 00' 00" E	14.14
3	14.14	N 45° 00' 00" E	14.14	N 45° 00' 00" E	14.14
4	14.14	N 45° 00' 00" E	14.14	N 45° 00' 00" E	14.14
5	14.14	N 45° 00' 00" E	14.14	N 45° 00' 00" E	14.14
6	14.14	N 45° 00' 00" E	14.14	N 45° 00' 00" E	14.14
7	14.14	N 45° 00' 00" E	14.14	N 45° 00' 00" E	14.14
8	14.14	N 45° 00' 00" E	14.14	N 45° 00' 00" E	14.14
9	14.14	N 45° 00' 00" E	14.14	N 45° 00' 00" E	14.14
10	14.14	N 45° 00' 00" E	14.14	N 45° 00' 00" E	14.14
11	14.14	N 45° 00' 00" E	14.14	N 45° 00' 00" E	14.14
12	14.14	N 45° 00' 00" E	14.14	N 45° 00' 00" E	14.14
13	14.14	N 45° 00' 00" E	14.14	N 45° 00' 00" E	14.14
14	14.14	N 45° 00' 00" E	14.14	N 45° 00' 00" E	14.14
15	14.14	N 45° 00' 00" E	14.14	N 45° 00' 00" E	14.14
16	14.14	N 45° 00' 00" E	14.14	N 45° 00' 00" E	14.14
17	14.14	N 45° 00' 00" E	14.14	N 45° 00' 00" E	14.14
18	14.14	N 45° 00' 00" E	14.14	N 45° 00' 00" E	14.14
19	14.14	N 45° 00' 00" E	14.14	N 45° 00' 00" E	14.14
20	14.14	N 45° 00' 00" E	14.14	N 45° 00' 00" E	14.14
21	14.14	N 45° 00' 00" E	14.14	N 45° 00' 00" E	14.14
22	14.14	N 45° 00' 00" E	14.14	N 45° 00' 00" E	14.14
23	14.14	N 45° 00' 00" E	14.14	N 45° 00' 00" E	14.14
24	14.14	N 45° 00' 00" E	14.14	N 45° 00' 00" E	14.14
25	14.14	N 45° 00' 00" E	14.14	N 45° 00' 00" E	14.14
26	14.14	N 45° 00' 00" E	14.14	N 45° 00' 00" E	14.14
27	14.14	N 45° 00' 00" E	14.14	N 45° 00' 00" E	14.14
28	14.14	N 45° 00' 00" E	14.14	N 45° 00' 00" E	14.14
29	14.14	N 45° 00' 00" E	14.14	N 45° 00' 00" E	14.14
30	14.14	N 45° 00' 00" E	14.14	N 45° 00' 00" E	14.14
31	14.14	N 45° 00' 00" E	14.14	N 45° 00' 00" E	14.14
32	14.14	N 45° 00' 00" E	14.14	N 45° 00' 00" E	14.14
33	14.14	N 45° 00' 00" E	14.14	N 45° 00' 00" E	14.14
34	14.14	N 45° 00' 00" E	14.14	N 45° 00' 00" E	14.14
35	14.14	N 45° 00' 00" E	14.14	N 45° 00' 00" E	14.14
36	14.14	N 45° 00' 00" E	14.14	N 45° 00' 00" E	14.14
37	14.14	N 45° 00' 00" E	14.14	N 45° 00' 00" E	14.14
38	14.14	N 45° 00' 00" E	14.14	N 45° 00' 00" E	14.14
39	14.14	N 45° 00' 00" E	14.14	N 45° 00' 00" E	14.14
40	14.14	N 45° 00' 00" E	14.14	N 45° 00' 00" E	14.14
41	14.14	N 45° 00' 00" E	14.14	N 45° 00' 00" E	14.14
42	14.14	N 45° 00' 00" E	14.14	N 45° 00' 00" E	14.14
43	14.14	N 45° 00' 00" E	14.14	N 45° 00' 00" E	14.14
44	14.14	N 45° 00' 00" E	14.14	N 45° 00' 00" E	14.14
45	14.14	N 45° 00' 00" E	14.14	N 45° 00' 00" E	14.14
46	14.14	N 45° 00' 00" E	14.14	N 45° 00' 00" E	14.14
47	14.14	N 45° 00' 00" E	14.14	N 45° 00' 00" E	14.14
48	14.14	N 45° 00' 00" E	14.14	N 45° 00' 00" E	14.14
49	14.14	N 45° 00' 00" E	14.14	N 45° 00' 00" E	14.14
50	14.14	N 45° 00' 00" E	14.14	N 45° 00' 00" E	14.14
51	14.14	N 45° 00' 00" E	14.14	N 45° 00' 00" E	14.14
52	14.14	N 45° 00' 00" E	14.14	N 45° 00' 00" E	14.14
53	14.14	N 45° 00' 00" E	14.14	N 45° 00' 00" E	14.14
54	14.14	N 45° 00' 00" E	14.14	N 45° 00' 00" E	14.14
55	14.14	N 45° 00' 00" E	14.14	N 45° 00' 00" E	14.14
56	14.14	N 45° 00' 00" E	14.14	N 45° 00' 00" E	14.14
57	14.14	N 45° 00' 00" E	14.14	N 45° 00' 00" E	14.14
58	14.14	N 45° 00' 00" E	14.14	N 45° 00' 00" E	14.14
59	14.14	N 45° 00' 00" E	14.14	N 45° 00' 00" E	14.14
60	14.14	N 45° 00' 00" E	14.14	N 45° 00' 00" E	14.14
61	14.14	N 45° 00' 00" E	14.14	N 45° 00' 00" E	14.14
62	14.14	N 45° 00' 00" E	14.14	N 45° 00' 00" E	14.14
63	14.14	N 45° 00' 00" E	14.14	N 45° 00' 00" E	14.14
64	14.14	N 45° 00' 00" E	14.14	N 45° 00' 00" E	14.14
65	14.14	N 45° 00' 00" E	14.14	N 45° 00' 00" E	14.14
66	14.14	N 45° 00' 00" E	14.14	N 45° 00' 00" E	14.14
67	14.14	N 45° 00' 00" E	14.14	N 45° 00' 00" E	14.14
68	14.14	N 45° 00' 00" E	14.14	N 45° 00' 00" E	14.14
69	14.14	N 45° 00' 00" E	14.14	N 45° 00' 00" E	14.14
70	14.14	N 45° 00' 00" E	14.14	N 45° 00' 00" E	14.14
71	14.14	N 45° 00' 00" E	14.14	N 45° 00' 00" E	14.14
72	14.14	N 45° 00' 00" E	14.14	N 45° 00' 00" E	14.14
73	14.14	N 45° 00' 00" E	14.14	N 45° 00' 00" E	14.14
74	14.14	N 45° 00' 00" E	14.14	N 45° 00' 00" E	14.14
75	14.14	N 45° 00' 00" E	14.14	N 45° 00' 00" E	14.14
76	14.14	N 45° 00' 00" E	14.14	N 45° 00' 00" E	14.14
77	14.14	N 45° 00' 00" E	14.14	N 45° 00' 00" E	14.14
78	14.14	N 45° 00' 00" E	14.14	N 45° 00' 00" E	14.14
79	14.14	N 45° 00' 00" E	14.14	N 45° 00' 00" E	14.14
80	14.14	N 45° 00' 00" E	14.14	N 45° 00' 00" E	14.14
81	14.14	N 45° 00' 00" E	14.14	N 45° 00' 00" E	14.14
82	14.14	N 45° 00' 00" E	14.14	N 45° 00' 00" E	14.14
83	14.14	N 45° 00' 00" E	14.14	N 45° 00' 00" E	14.14
84	14.14	N 45° 00' 00" E	14.14	N 45° 00' 00" E	14.14
85	14.14	N 45° 00' 00" E	14.14	N 45° 00' 00" E	14.14
86	14.14	N 45° 00' 00" E	14.14	N 45° 00' 00" E	14.14
87	14.14	N 45° 00' 00" E	14.14	N 45° 00' 00" E	14.14
88	14.14	N 45° 00' 00" E	14.14	N 45° 00' 00" E	14.14
89	14.14	N 45° 00' 00" E	14.14	N 45° 00' 00" E	14.14
90	14.14	N 45° 00' 00" E	14.14	N 45° 00' 00" E	14.14
91	14.14	N 45° 00' 00" E	14.14	N 45° 00' 00" E	14.14
92	14.14	N 45° 00' 00" E	14		

# PLAT OF LOTS 27-55 BLOCK 3, LOTS 6-11 BLOCK 4, LOTS 22-32 BLOCK 8, AUBURN HILLS SUBDIVISION

(FORMERLY A PORTION OF THE NW<sup>1</sup>/<sub>4</sub> OF THE SW<sup>1</sup>/<sub>4</sub>, AND A PORTION OF THE SW<sup>1</sup>/<sub>4</sub> OF THE NW<sup>1</sup>/<sub>4</sub>)  
LOCATED IN THE NW<sup>1</sup>/<sub>4</sub> OF THE SW<sup>1</sup>/<sub>4</sub>, AND IN THE SW<sup>1</sup>/<sub>4</sub> OF THE NW<sup>1</sup>/<sub>4</sub>,  
SECTION 13, T2N, R7E, BHM,  
RAPID CITY, PENNINGTON COUNTY, SOUTH DAKOTA

FUTURE PLATTING



## RECEIVED

DEC 10 2004

DECEMBER 6, 2004  
NO SCALE

Rapid City Growth  
Management Department

C:\DRAWINGS\1851\PHASE3-SC\PLATSHT.DWG, 8x11, 1/30/2004 8:49:20 AM