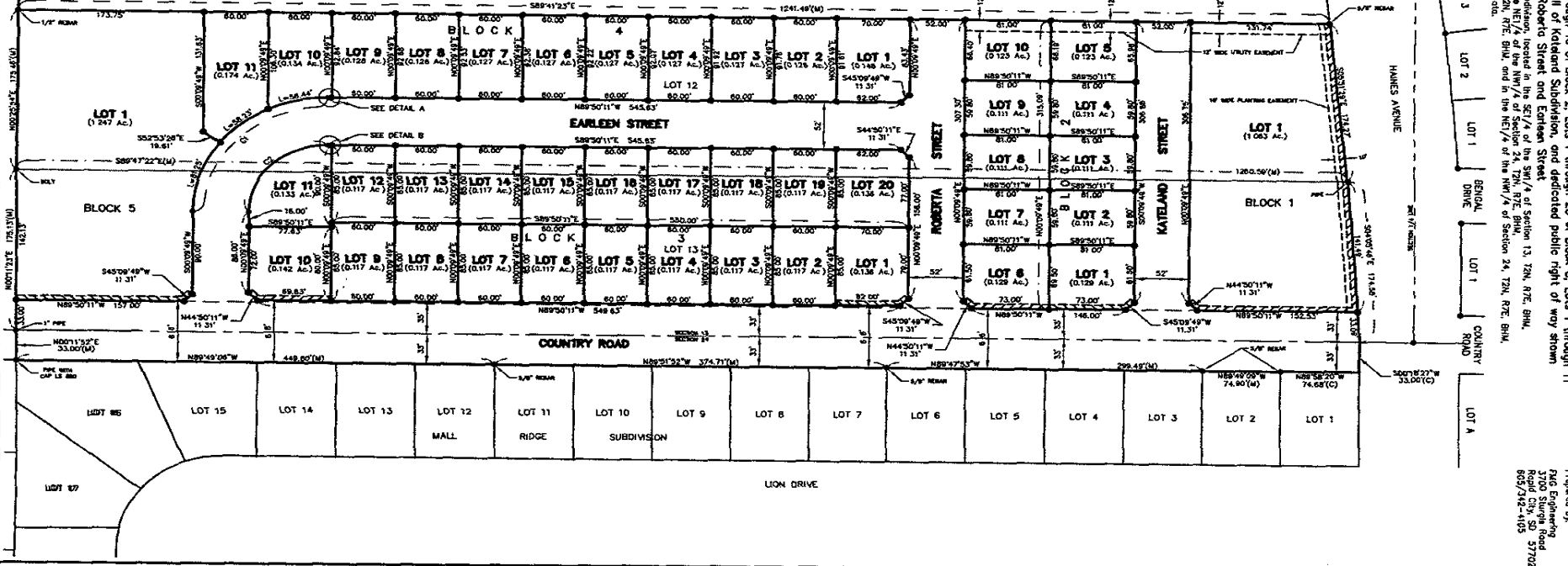


C1  
CHORD BEARING=N45°09'49\"/>  
CHORD DISTANCE=178.19'  
A=90°00'00\"/>  
R=128.00'  
L=197.92'

C2  
CHORD BEARING=N45°09'49\"/>  
CHORD DISTANCE=104.55'  
A=90°00'00\"/>  
R=74.00'  
L=116.24'



Plot of Lot 1 of Block 1, Lots 1 through 10 of Block 2, Lots 1 through 20 of Block 3, Lots 1 through 11 of Block 4 and Lot 1 of Block 5, all of Katerland Subdivision, and dedicated public right of way stream as Country Road, Katerland Street, Roberta Street and Earleen Street.  
Formerly Lots 12 and 13 of section 8 subsection, located in the SW 1/4 of section 13, T2N, R7E, B1M, located in SE 1/4 SW 1/4 of section 13, T2N, R7E, B1M, and in the NE 1/4 of the SW 1/4 of section 24, T2N, R7E, B1M, Rapid City, Pennington County South Dakota.